

LOC I-RGO 109.5	APP CRS 189°	Rwy Idg TDZE Apt Elev	7000 1218 1226
---------------------------	------------------------	-----------------------------	---

ILS or LOC RWY 19

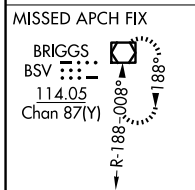
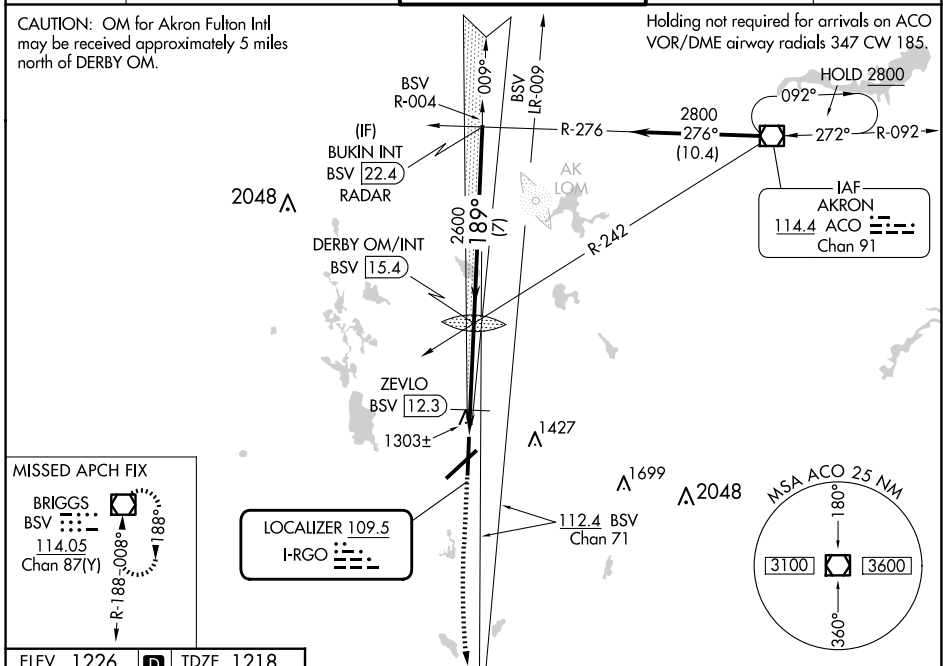
AKRON-CANTON RGNL (CAK)

⚠ ** RVR 1800 authorized with the use of FD or AP or HUD to DA. For inoperative ALS, increase CAT C/D visibility to RVR 6000. ZEVLO fix minimums: For inoperative ALS, increase Cat C/D visibility to RVR 5500.

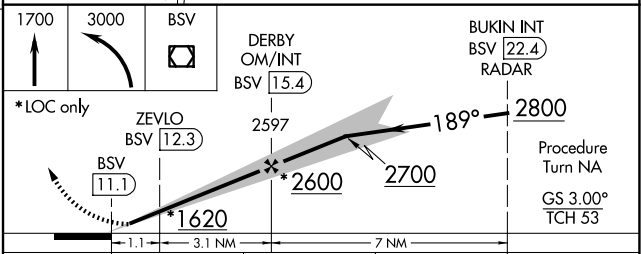
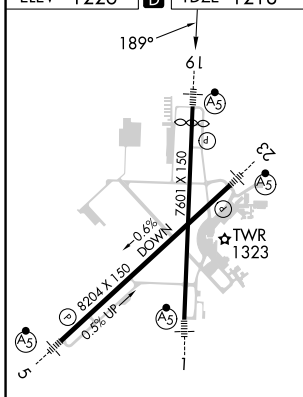
MALS

MISSED APPROACH: Climb to 1700 then climbing left turn to 3000 direct BSV VOR/DME and hold.

ATIS 121.05	CLEVELAND APP CON * 125.5 269.25	AKRON-CANTON TOWER 134.75 279.575	GND CON 121.7 348.6	CLNC DEL 132.05
-----------------------	--	---	-------------------------------	---------------------------



ELEV 1226	D	TDZE 1218
-----------	----------	-----------



CATEGORY	A	B	C	D
S-ILS 19	**1418/24 200 (200-½)			
S-LOC 19	1620/24	402 (400-½)	1620/40	402 (400-¾)
CIRCLING	1760-1	534 (600-1)	1780-1½ 554 (600-1½)	1800-2 574 (600-2)
ZEVLO FIX MINIMUMS				
S-LOC 19	1580/24 362 (400-½)			1580/40 362 (400-¾)
CIRCLING	1760-1	534 (600-1)	1780-1½ 554 (600-1½)	1800-2 574 (600-2)

FAF to MAP 4.2 NM					
Knots	60	90	120	150	180
Min:Sec	4:12	2:48	2:06	1:41	1:24

EC-2, 20 MAR 2025 to 17 APR 2025

EC-2, 20 MAR 2025 to 17 APR 2025