

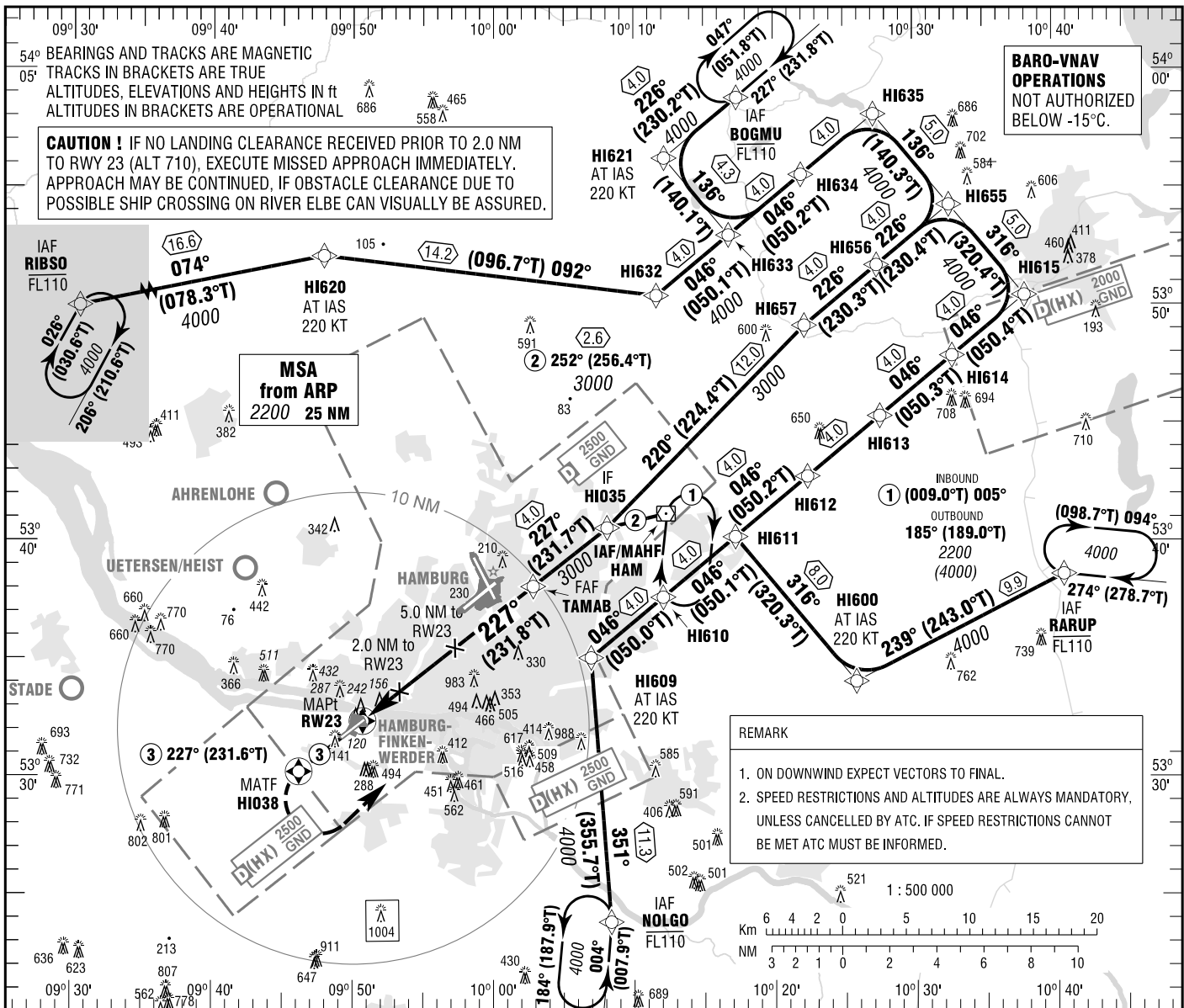
INSTRUMENT APPROACH
CHART - ICAO

VAR 4° E
ELEV 21
OCH RELATED TO
THR 23 ELEV 15

FINKENWERDER ATIS 135.965
BREMEN RADAR 134.255
HAMBURG ARRIVAL 120.540
118.205

FINKENWERDER TOWER 123.255
259.150
FINKENWERDER APRON 121.655

HAMBURG-FINKENWERDER
RNP RWY 23
EGNOS CH 94665 E23A



CAUTION! IF NO LANDING CLEARANCE RECEIVED PRIOR TO 2.0 NM TO RWY 23 (ALT 710), EXECUTE MISSED APPROACH IMMEDIATELY. APPROACH MAY BE CONTINUED, IF OBSTACLE CLEARANCE DUE TO POSSIBLE SHIP CROSSING ON RIVER ELBE CAN VISUALLY BE ASSURED.

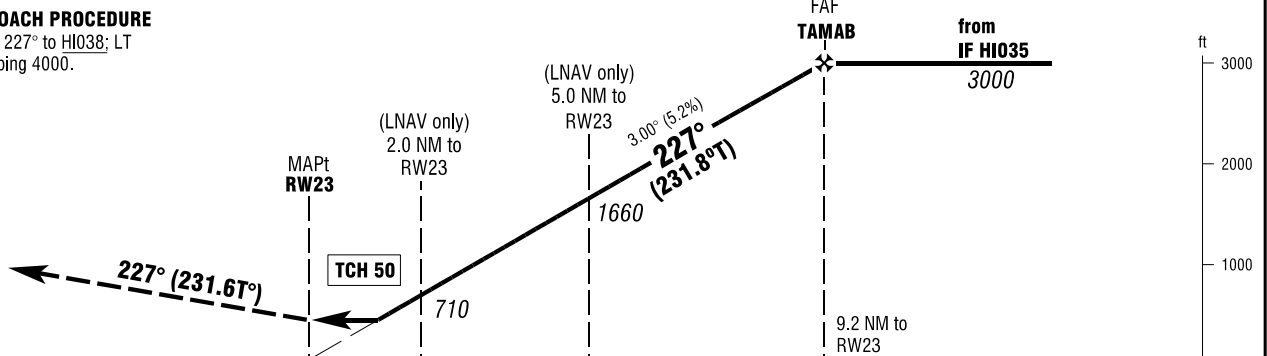
BARO-VNAV OPERATIONS
NOT AUTHORIZED BELOW -15°C.

REMARK

- ON DOWNWIND EXPECT VECTORS TO FINAL.
- SPEED RESTRICTIONS AND ALTITUDES ARE ALWAYS MANDATORY, UNLESS CANCELLED BY ATC. IF SPEED RESTRICTIONS CANNOT BE MET ATC MUST BE INFORMED.

MISSED APPROACH PROCEDURE

Climb on course 227° to HI038; LT direct HAM climbing 4000.



OCA (OCH)	A	B	C	D	D _L
LNAV	490 (480)	490 (480)	490 (480)	490 (480)	
LNAV / VNAV	373 (358)	382 (367)	392 (377)	402 (387)	
LPV	252 (237)	262 (247)	271 (256)	281 (266)	316 (301)
CIRCLING *	590 (570)	730 (710)	910 (890)	910 (890)	

DIST THR / RW23	2	3	4	5	6	7	8	9
ALTITUDE	710	1030	1340	1660	1980	2300	2620	2940

Timing not authorized for defining the MAPt.

GS	kt	80	100	120	140	160	180
TAMAB - RW23 (9.2 NM)	MIN:SEC	6:54	5:31	4:36	3:57	3:27	3:04
Rate of descent (5.2%)	ft / MIN	420	530	640	740	850	960

MINIMUM GROUND VISIBILITY REQUIRED: 1000m.* NORTHWEST OF AERODROME ONLY

Correction: Completely revised.