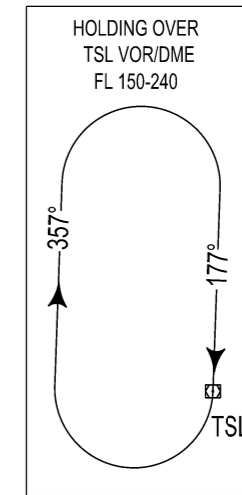
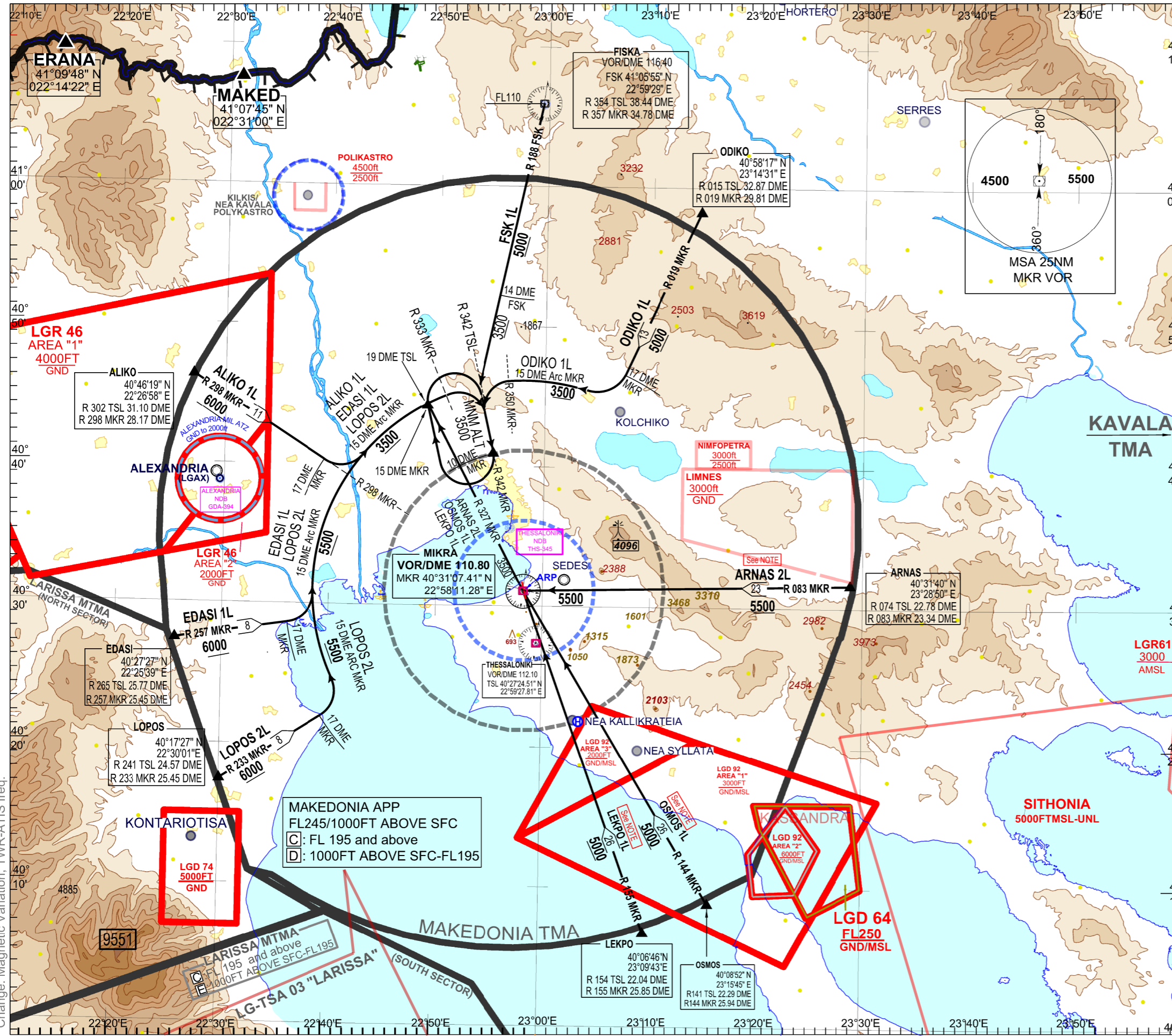


THESSALONIKI / MAKEDONIA
RWY 16 (BASED ON MKR VOR/DME)
 ALIKO 1L, ARNAS 2L, EDASI 1L, FSK 1L,
 LEKPO 1L, LOPOS 2L, ODIKO 1L, OSMOS 1L

TRANSITION ALTITUDE
 6000 ft

AERODROME ELEV 22 ft

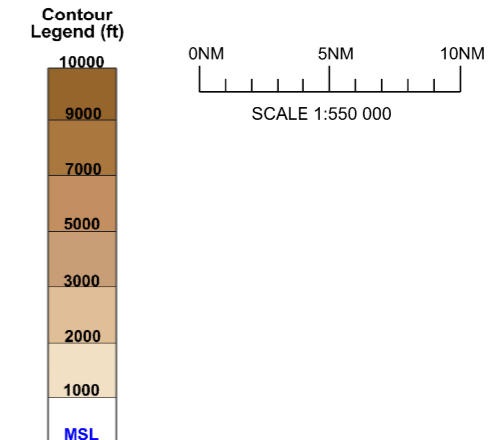
ATIS 127.555 APP 120.800
 TWR 118.105



ELEVATIONS, ALTITUDES
 ARE IN FEET
 BEARINGS, TRACKS AND
 RADIALS ARE MAGNETIC
 DISTANCES ARE IN NM
 VAR 5°E/2022 - Annual Change 5'44"

Length of STAR EDASI 1L (from EDASI to R 342 MKR 10 DME Fix): 36NM.
 Length of STAR LOPOS 2L (from LOPOS to R 342 MKR 10 DME Fix): 42NM.
 Length of STAR ALIKO 1L (from ALIKO to R 342 MKR 10 DME Fix): 28NM.
 Length of STAR ODIKO 1L (from ODIKO to R 342 MKR 10 DME Fix): 28NM.
 Length of STAR ARNAS 2L (from ARNAS to R 342 MKR 10 DME Fix): 48NM.
 Length of STAR OSMOS 1L (from OSMOS to R 342 MKR 10 DME Fix): 51NM.
 Length of STAR LEKPO 1L (from LEKPO to R 342 MKR 10 DME Fix): 51NM.
 Length of STAR FSK 1L (from FSK to R 342 MKR 10 DME Fix): 26NM.

NOTE
 Executing STARs LEKPO 1L, OSMOS 1L, ARNAS 2L:
 After passing MKR VOR/DME intercept R 327 MKR.
 At 15 DME MKR turn right (IAS Max 230kt, Bank Angle 25°)
 and enter the Holding.



Change: Magnetic Variation, TWR-ATIS freq.