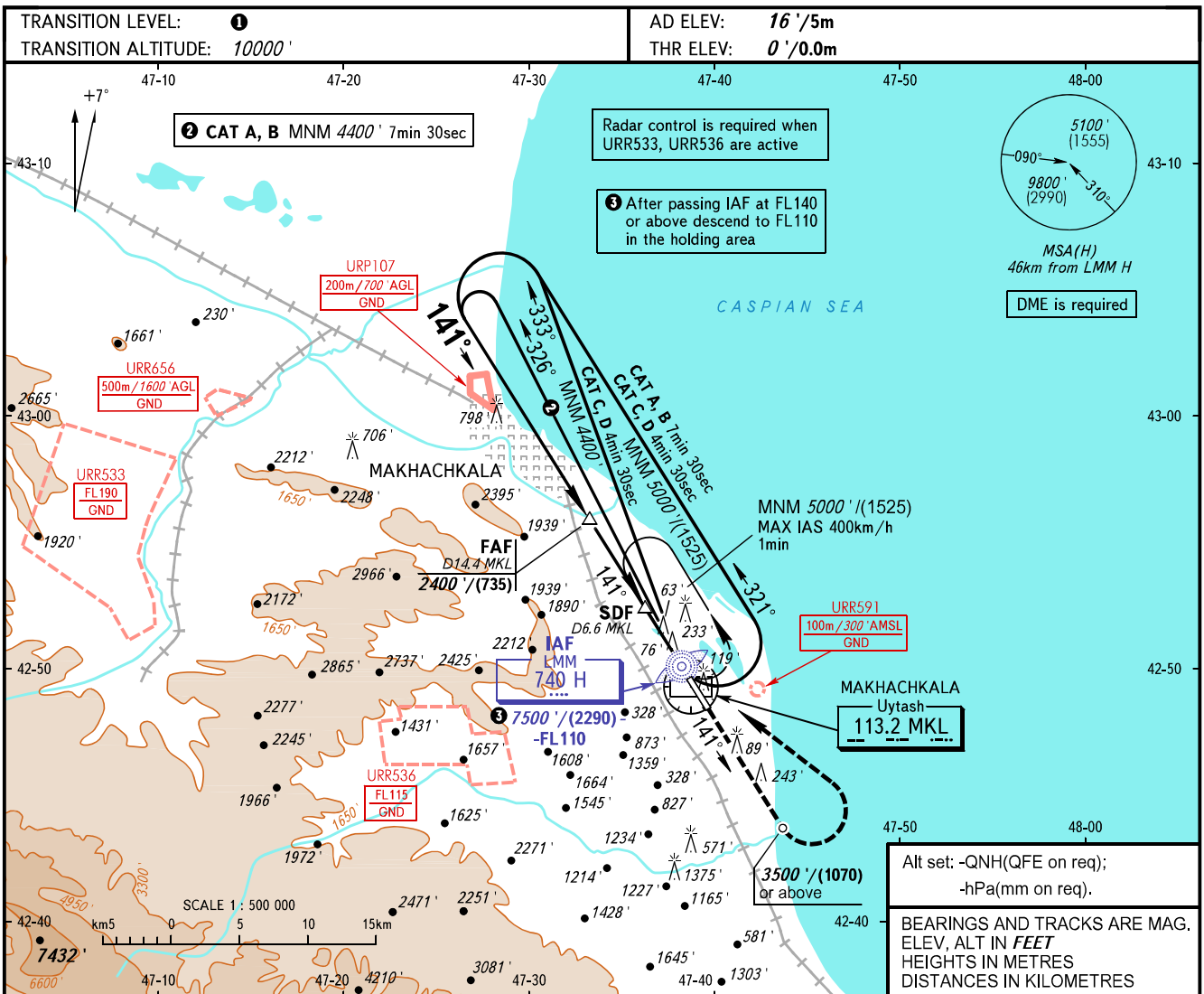


**INSTRUMENT
APPROACH
CHART - ICAO**

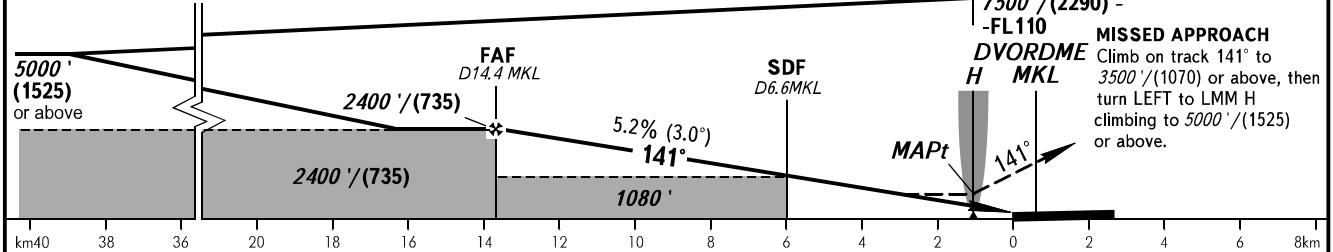
RADAR
START **121.300**
121.300

MAKHACHKALA, RUSSIA
UYTASH
NDB Z RWY 14



DME MKL	14.0	12.0	10.0	8.0	6.0	4.0
ALTITUDE/HEIGHT	2354'/(718)	2011'/(613)	1667'/(509)	1323'/(404)	979'/(299)	634'/(194)

MAPt at LMM H. Timing not authorized for defining MAPt.



OCA(H)		A	B	C	D
Straight-in Approach	WO SDF	1080' (1080')	1080' (1080')	1080' (1080')	1080' (1080')
	With SDF	570' (570')	570' (570')	570' (570')	570' (570')
Circling		1080' (1080')	1080' (1080')	1720' (1700')	1870' (1860')

1 TRANSITION LEVEL:
- FL110 when QNH is 1013 hPa (760mm mercury column) or above;
- FL120 when QNH is 977 hPa (733mm mercury column) or above but less than 1013 hPa (760mm mercury column);
- FL130 when QNH is less than 977 hPa (733mm mercury column).

WARNING:
1. Visual manoeuvring west of the aerodrome is PROHIBITED.
2. Turn before passing MAPt is PROHIBITED.

GROUND SPEED	km/h	150	180	210	240	270	300	330	360	390	420	450
RATE OF DESCENT	m/s	2.2	2.6	3.0	3.5	3.9	4.3	4.8	5.2	5.6	6.1	6.5
	ft/min	427	512	597	682	768	853	938	1024	1109	1194	1280

CHANGE: New chart