

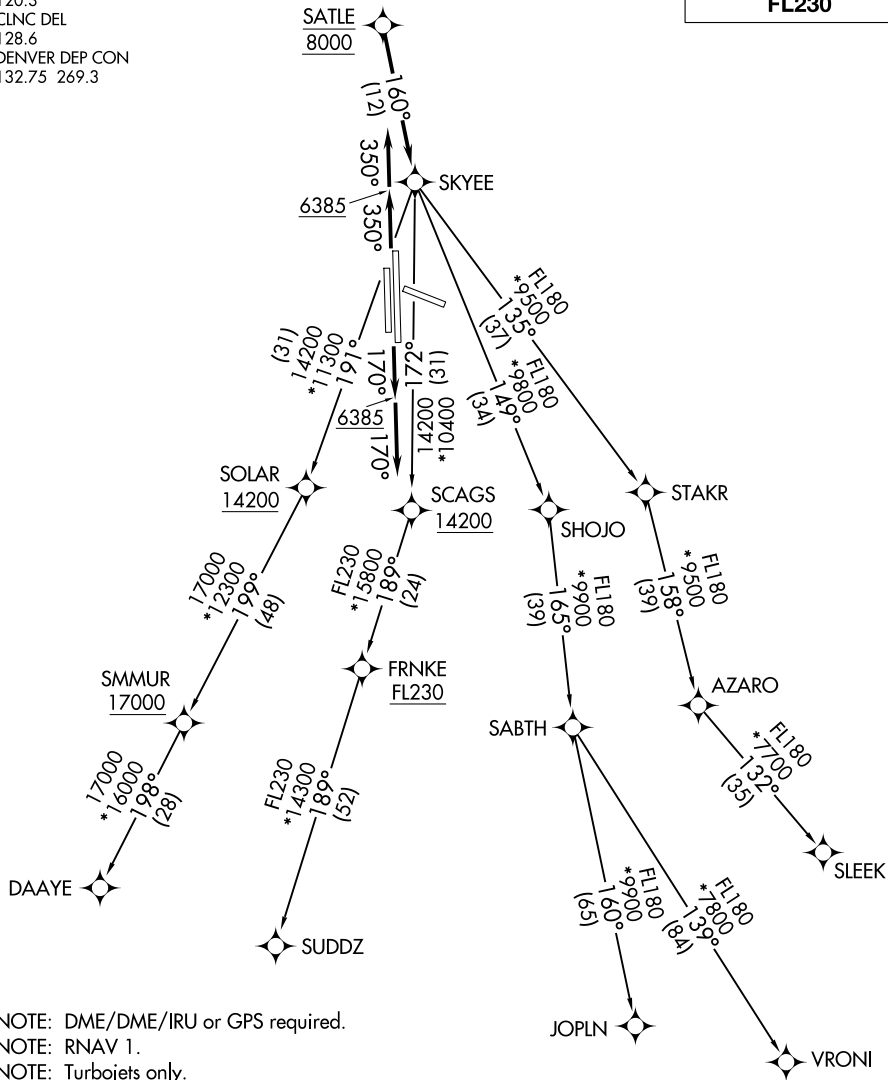
# SKYEE ONE DEPARTURE (RNAV)

AL-5715 (FAA)

CENTENNIAL (APA)  
DENVER, COLORADO

ATIS  
120.3  
CLNC DEL  
128.6  
DENVER DEP CON  
132.75 269.3

**TOP ALTITUDE:  
FL230**



SW-1, 20 MAR 2025 to 17 APR 2025

SW-1, 20 MAR 2025 to 17 APR 2025

- NOTE: DME/DME/IRU or GPS required.
- NOTE: RNAV 1.
- NOTE: Turbojets only.
- NOTE: RADAR required.

### TAKEOFF MINIMUMS

Rwys 10, 28: NA.  
 Rwy 17L: Standard with minimum climb of 255' per NM to 8000.  
 Rwy 17R: Standard with minimum climb of 370' per NM to 8000.  
 Rwys 35L/R: Standard.

(NARRATIVE ON FOLLOWING PAGE)

NOTE: Chart not to scale.

# SKYEE ONE DEPARTURE (RNAV)