

STANDARD DEPARTURE CHART -INSTRUMENT

RJOK / KOCHI

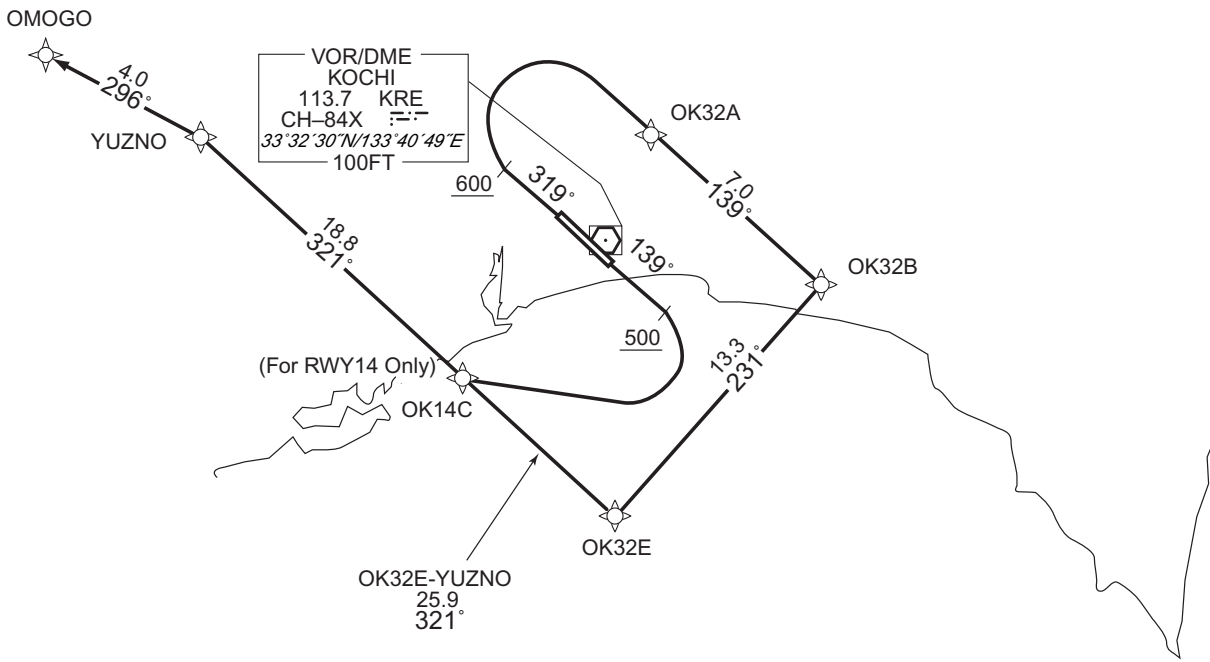
RNAV SID

OMOGO THREE DEPARTURE

RNAV 1

Note 1) DME/DME/IRU or GNSS required. ※The aircraft equipped with only DME/DME/IRU must be able to update its position without delay at the starting point of take-off roll. 2) RADAR service required.	Critical DME	RWY14 : KRE 16NM to YUZNO - 7NM to YUZNO SUC 16NM to YUZNO - 7NM to YUZNO RWY32 : KRE 4NM to OK32B - 25NM to YUZNO SUC 4NM to OK32B - 25NM to YUZNO
	DME GAP	RWY14 : DER - 16NM to YUZNO RWY32 : DER - 4NM to OK32B 25NM to YUZNO - 18NM to YUZNO
	Inappropriate Nav aids	See AD1.1.6.10.3. Inappropriate NAVAIDs for RNAV1

VAR 8° W



CHANGE : PROC renamed. VAR. PROC course. Note RWY14 added.

RWY14 : Climb on HDG139° at or above 500FT, turn right direct to OK14C, to YUZNO, to OMOGO.

RWY32 : Climb on HDG319° at or above 600FT, turn right direct to OK32A, to OK32B, to OK32E, to YUZNO, to OMOGO.

Note RWY14 : 5.0% climb gradient required up to 500FT.

OBST ALT 61FT located at 0.2NM 179° FM end of RWY14.

RWY32 : 6.0% climb gradient required up to 2300FT.

OBST ALT 1970FT located at 6.1NM 005° FM end of RWY32.

STANDARD DEPARTURE CHART -INSTRUMENT

RJOK / KOCHI

RNAV SID

OMOGO THREE DEPARTURE

RWY14

Serial Number	Path Descriptor	Waypoint Identifier	Fly Over	Course °M(°T)	Magnetic Variation	Distance (NM)	Turn Direction	Altitude (FT)	Speed (KIAS)	Vertical Angle	Navigation Specification
001	VA	-	-	139 (130.6)	-7.9	-	-	+500	-	-	RNAV1
002	DF	OK14C	-	-	-7.9	-	R	-	-	-	RNAV1
003	TF	YUZNO	-	321 (312.9)	-7.9	18.8	-	-	-	-	RNAV1
004	TF	OMOGO	-	296 (288.5)	-7.9	4.0	-	-	-	-	RNAV1

RWY32

Serial Number	Path Descriptor	Waypoint Identifier	Fly Over	Course °M(°T)	Magnetic Variation	Distance (NM)	Turn Direction	Altitude (FT)	Speed (KIAS)	Vertical Angle	Navigation Specification
001	VA	-	-	319 (310.6)	-7.9	-	-	+600	-	-	RNAV1
002	DF	OK32A	-	-	-7.9	-	R	-	-	-	RNAV1
003	TF	OK32B	-	139 (130.7)	-7.9	7.0	-	-	-	-	RNAV1
004	TF	OK32E	-	231 (222.8)	-7.9	13.3	-	-	-	-	RNAV1
005	TF	YUZNO	-	321 (312.9)	-7.9	25.9	-	-	-	-	RNAV1
006	TF	OMOGO	-	296 (288.5)	-7.9	4.0	-	-	-	-	RNAV1

Waypoint Coordinates

Waypoint Identifier	Coordinates	Waypoint Identifier	Coordinates
OK14C	332650.1N / 1333334.8E	YUZNO	333934.0N / 1331704.7E
OK32A	333615.7N / 1334417.5E	OMOGO	334049.7N / 1331233.1E
OK32B	333143.9N / 1335036.8E		
OK32E	332159.2N / 1333949.8E		

CHANGE : PROC renamed. PROC course. VAR: Waypoint Coordinates added.