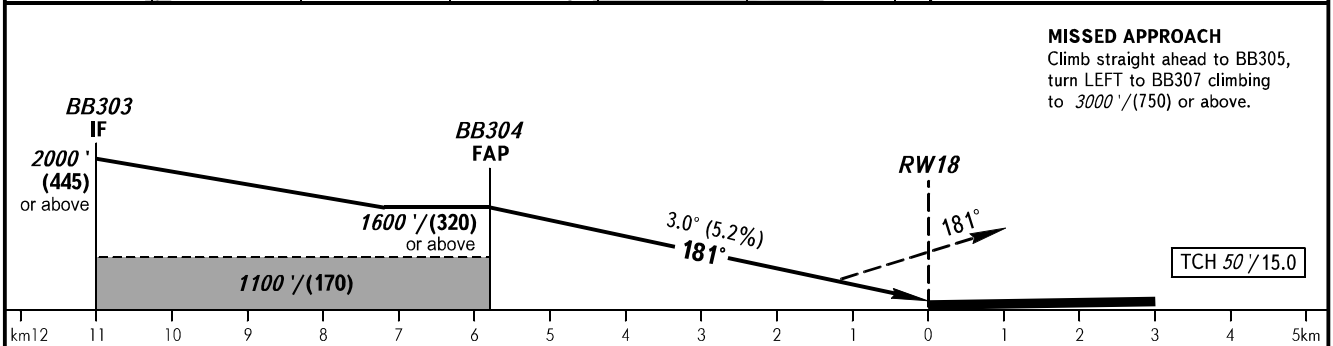
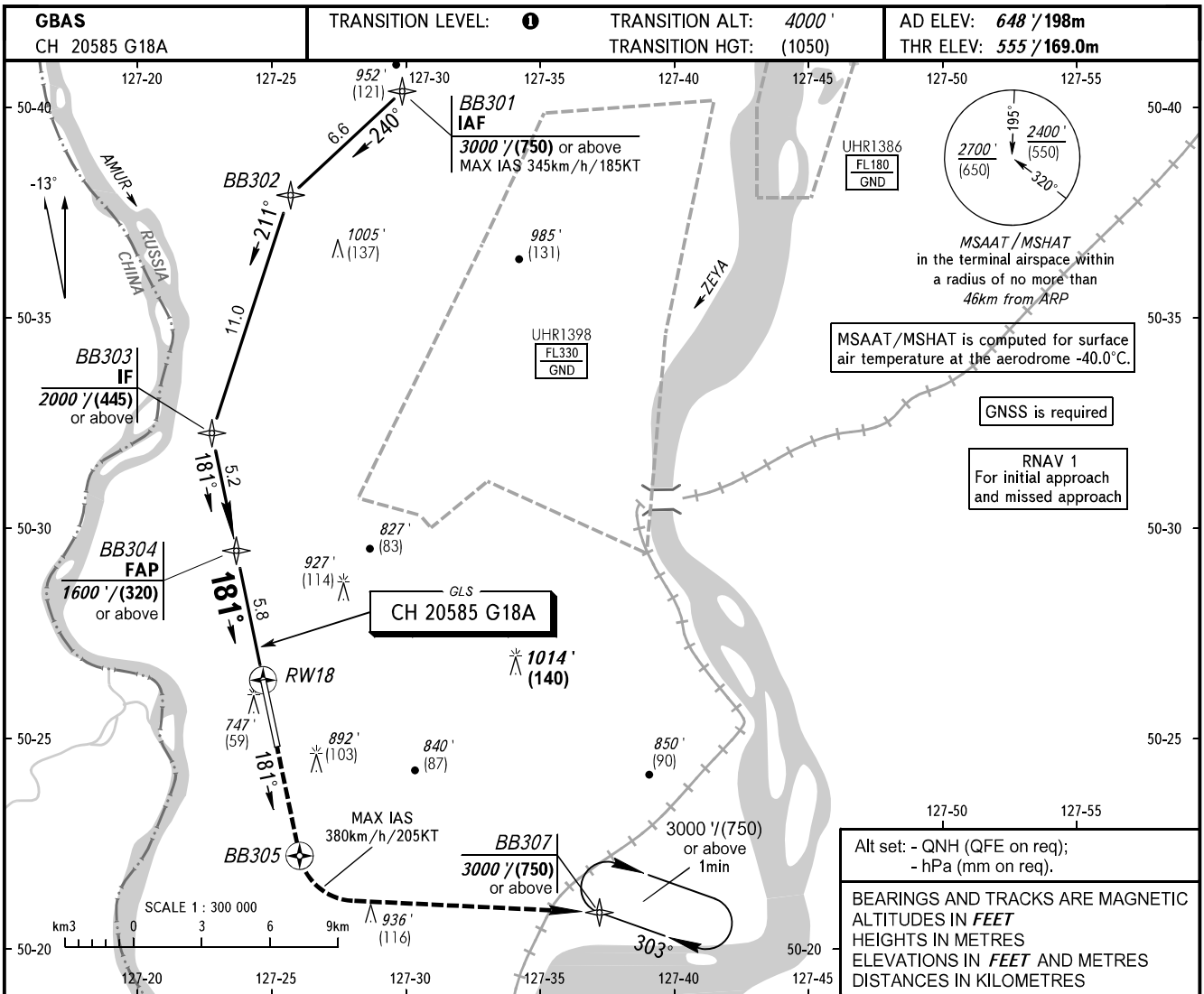


**INSTRUMENT  
APPROACH  
CHART - ICAO**

BLAGOVESHCHENSK TOWER **127.200**

**BLAGOVESHCHENSK, RUSSIA  
IGNATYEVO  
GLS RWY 18**



OCA(H)		A	B	C	D				
Straight-in Approach	<b>CAT I</b>	705' (150') (46)	716' (161') (50)	729' (174') (54)	743' (188') (58)				
Circling		1190' (540') (165)	1220' (570') (175)	1330' (680') (210)	1340' (700') (215)				
GROUND SPEED		km/h	150	180	210	240	270	300	330
		kt	81	97	113	130	146	162	178
RATE OF DESCENT		m/s	2.2	2.6	3.0	3.5	3.9	4.3	4.8
		ft/min	427	512	597	682	768	853	938

**1** TRANSITION LEVEL:  
- FL050 when QNH is 1013 hPa (760mm mercury column) or above;  
- FL060 when QNH is 977 hPa (733mm mercury column) or above, but less than 1013 hPa (760mm mercury column);  
- FL070 when QNH is less than 977 hPa (733mm mercury column).

Visual manoeuvring to the west of AD is PROHIBITED.

CHANGE: New chart