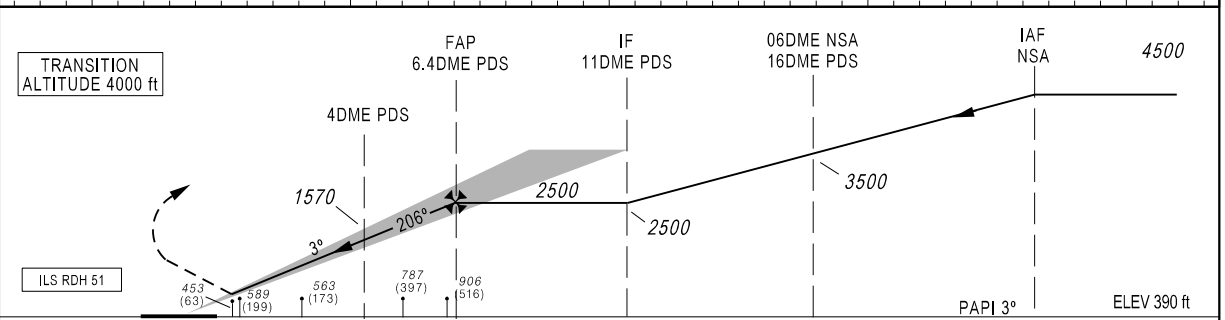
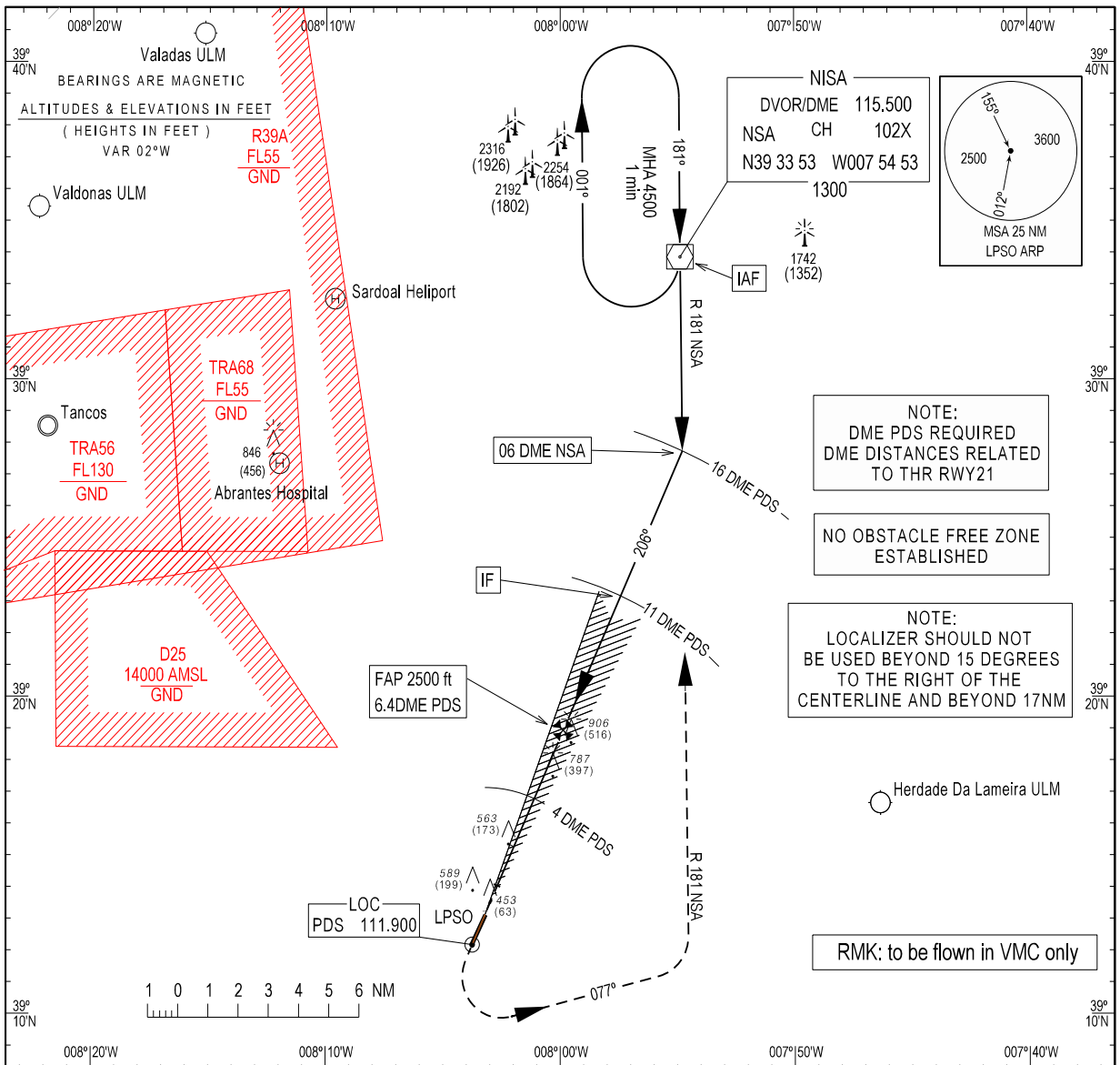


INSTRUMENT  
APPROACH  
CHART - ICAO

AD ELEV 390 ft  
HEIGHTS RELATED  
THR RWY 21 - ELEV 390 ft

PONTE DE SOR INFORMATION 119.805  
LISBOA INFORMATION 123.755

PONTE DE SOR (LPSO)  
ILS  
RWY21  
CAT A-B



TRANSITION ALTITUDE 4000 ft  
ILS RDH 51  
PAPI 3°  
ELEV 390 ft (THR RWY 21)

CAT	ILS CAT I		CIRCLING
	MDA(H)	OCH	MDA(H)
A	605 (218)	180	1485 (1100)
B	605 (218)	188	1485 (1100)

Speed	kt	80	100	120	140	160	180	200
Rate of descent (3°)	ft/min	420	525	630	735	840	945	1050

MISSED APPROACH:  
Climb straight ahead to 4500 ft, when passing 2000 ft, turn left heading 077°, to intercept and proceed R181 NSA to holding NISA. CTC AFIS

RCF: Squawk 7600. Proceed as above. On NISA holding make one complete holding pattern at 4500 ft, and then perform another ILS approach.

MSA changed.

THIS PAGE INTENTIONALLY LEFT BLANK