

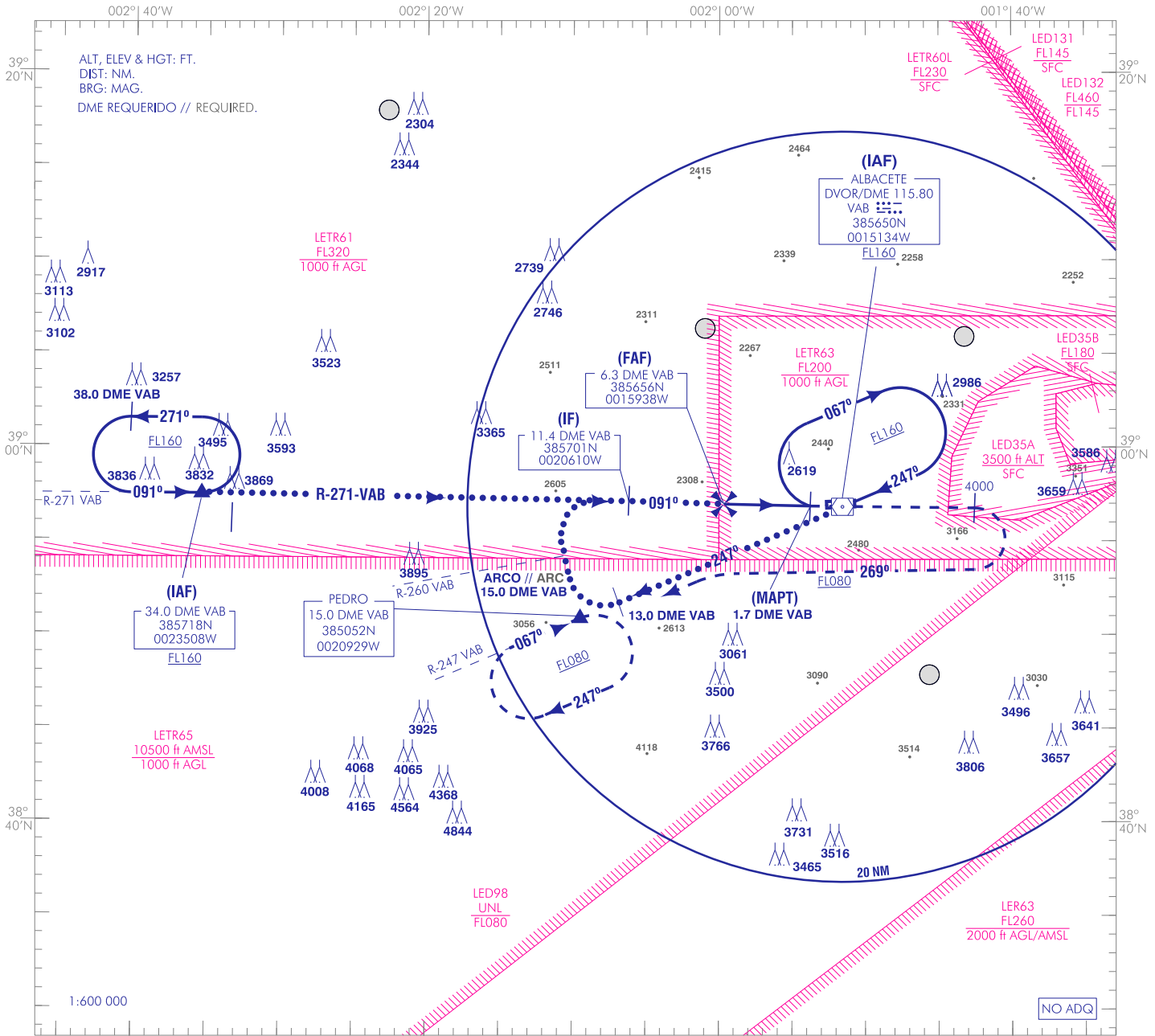
CARTA DE APROXIMACIÓN  
POR INSTRUMENTOS-MIPS

ELEV AD  
2301  
VAR 0° (2020)

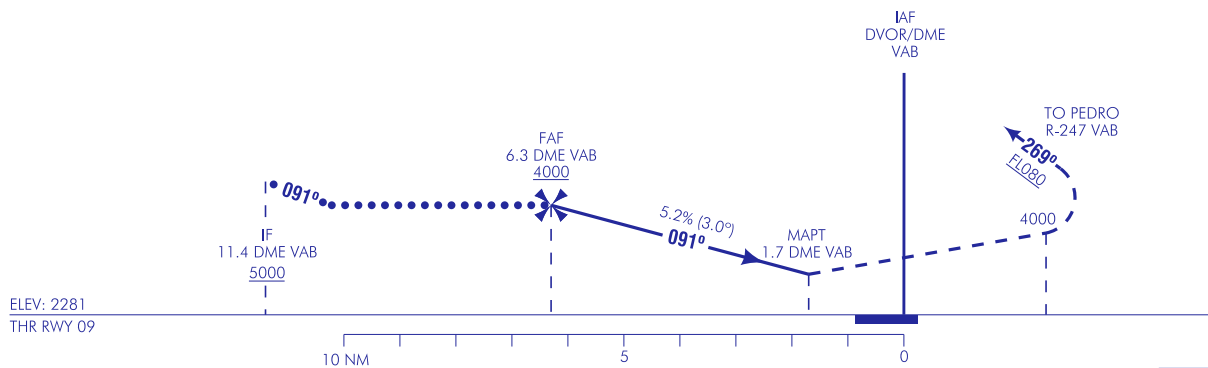
APP 139.305 C  
257.800 MHz

TWR 122.105 C  
386.675 MHz  
GCA 281.075 MHz

ALBACETE  
HI-VOR  
RWY 09



**FRUSTRADA:** SUBIR DIRECTO A 4000. VIRAR A LA DERECHA EN RUMBO MAGNÉTICO 269° ASCIENDIENDO A FLO80. INTERCEPTAR R-247 VAB DIRECTO A PEDRO.  
**MISSED APCH:** CLIMB DIRECT TO 4000. TURN RIGHT MAGNETIC HEADING 269° CLIMBING TO FLO80. INTERCEPT R-247 VAB DIRECT TO PEDRO.

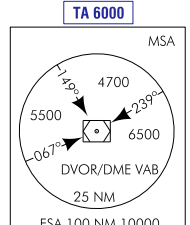


HGT REF ELEV THR RWY 09

CAT	A	B	C	D	HPMA
S-VOR	2580/1.5 300 (300-1.5)				
CIRCUITO	2700/1.5 400 (400-1.5)	2800/1.6 500 (500-1.6)	3150/2.4 850 (900-2.4)	3150/3.6 850 (900-3.6)	2920/3.2 620 (700-3.2)

GS	kt	80	100	120	140	160	180
FAF-THR:	min:s						
FAF-MAPT: 4.6 NM	min:s	3:27	2:45	2:17	1:58	1:43	1:31
ROD: 5.2%	ft/min	424	531	637	743	849	955

ALT DME (VAB) FNA										
13	12	11	10	9	8	7	6	5	4	3
							3960	3640	3320	3000
								2690		



CAMBIOS: FRECUENCIAS, AERÓDROMOS RESTRINGIDOS, OBSTÁCULOS.  
CHANGES: FRECUENCIAS, RESTRICTED AERODROMES, OBSTACLES.

**INTENCIONADAMENTE EN BLANCO**  
**INTENTIONALLY BLANK**