

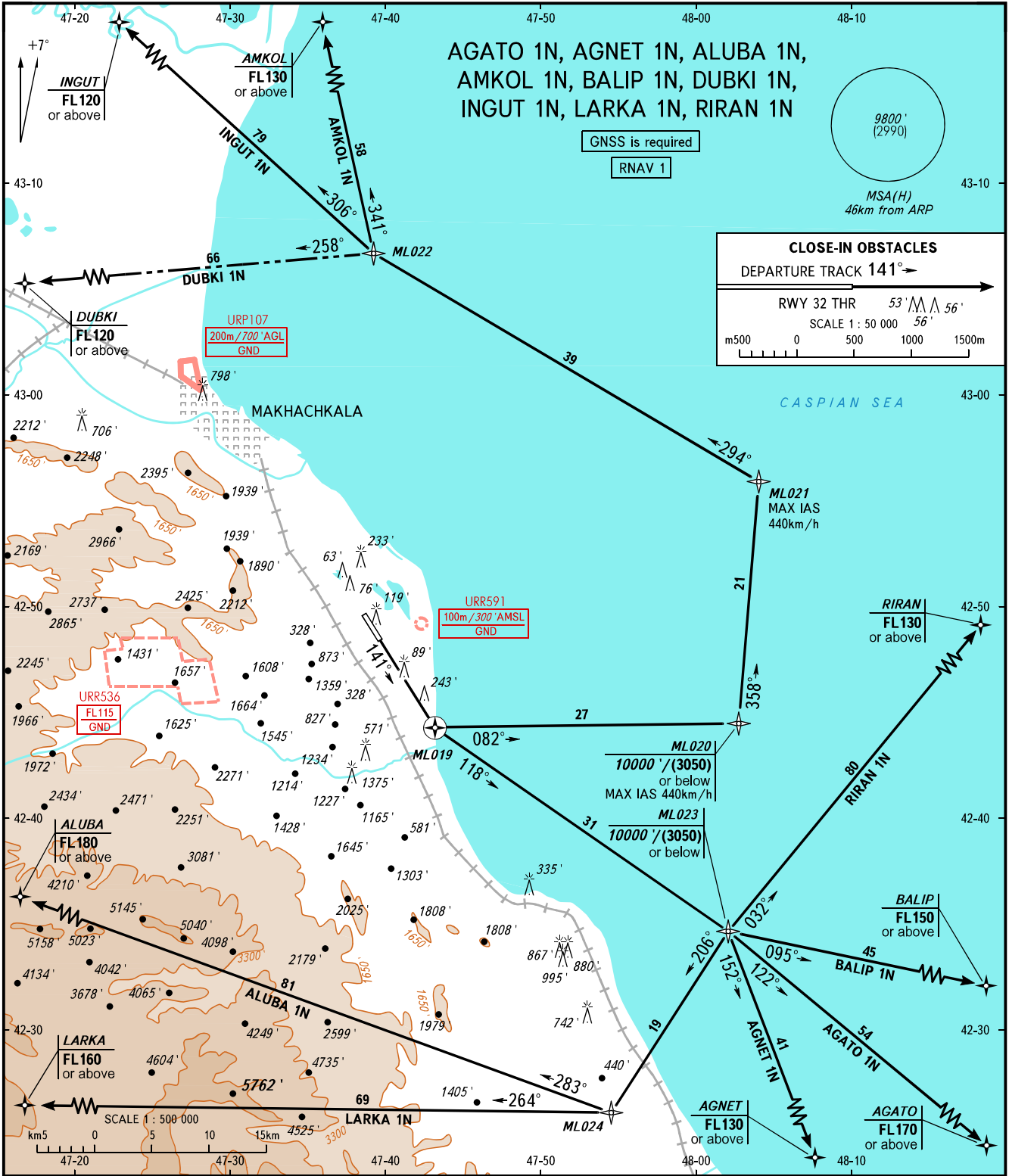
STANDARD DEPARTURE CHART
INSTRUMENT (SID) - ICAO

TRANSITION
ALTITUDE : 10000'

MAKHACHKALA, RUSSIA

UYTASH

RNAV RWY 14



START 121.300
RADAR 121.300
APPROACH 119.700

The minimum climb gradients are as follows (required due to the airspace structure):
- 5.4% up to FL170 for AGATO 1N;
- 4.8% up to FL130 for AGNET 1N;
- 4.0% up to FL180 for ALUBA 1N;
- 5.4% up to FL150 for BALIP 1N;
- 3.9% up to FL160 for LARKA 1N.

BEARINGS AND TRACKS ARE MAGNETIC
ALTITUDES AND ELEVATIONS IN FEET
HEIGHTS IN METRES
DISTANCES IN KILOMETRES

Alt set: -QNH(QFE on req);
-hPa(mm on req).

CHANGE: New chart