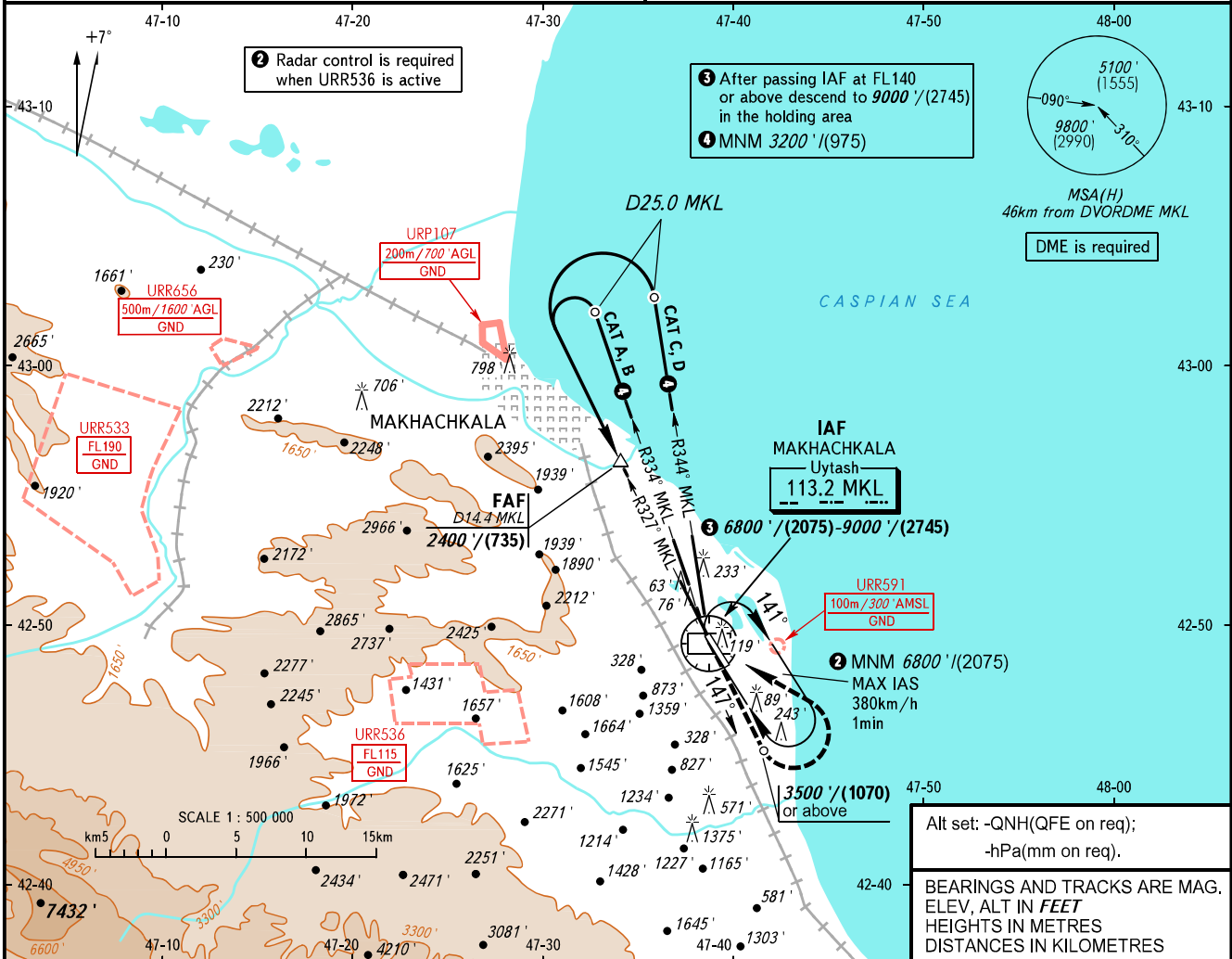


**INSTRUMENT  
APPROACH  
CHART - ICAO**

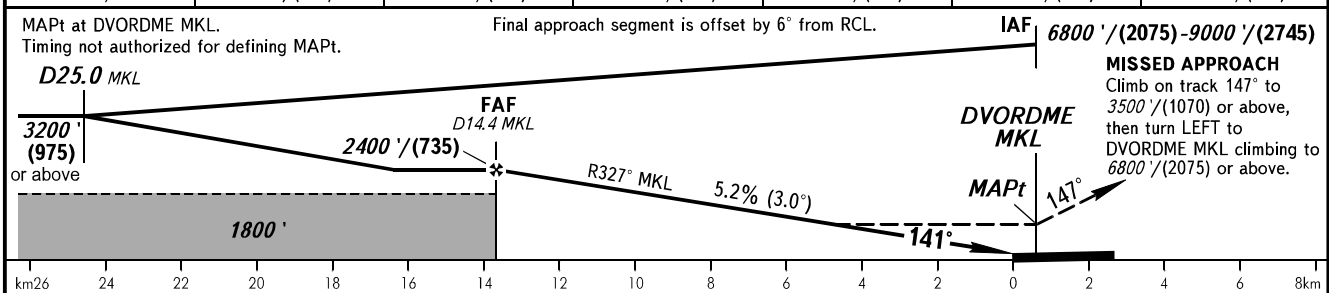
RADAR START 121.300  
121.300

**MAKHACHKALA, RUSSIA**  
UYTASH  
DVOR RWY 14

TRANSITION LEVEL: ①  
TRANSITION ALTITUDE: 10000'  
AD ELEV: 16' / 5m  
THR ELEV: 0' / 0.0m



DME MKL	14.0	12.0	10.0	8.0	6.0	4.0
ALTITUDE/HEIGHT	2354' / (718)	2011' / (613)	1667' / (509)	1323' / (404)	979' / (299)	634' / (194)



OCA(H)	A	B	C	D
Straight-in Approach	570' (570')	570' (570')	570' (570')	570' (570')
Circling	790' (770')	830' (810')	1720' (1700')	1870' (1860')

① TRANSITION LEVEL:  
- FL110 when QNH is 1013 hPa (760mm mercury column) or above;  
- FL120 when QNH is 977 hPa (733mm mercury column) or above, but less than 1013 hPa (760mm mercury column);  
- FL130 when QNH is less than 977 hPa (733mm mercury column).

**WARNING:**  
1. Visual manoeuvring west of the aerodrome is PROHIBITED.  
2. Turn before passing MAPt is PROHIBITED.

GROUND SPEED	km/h	150	180	210	240	270	300	330	360	390	420	450
	m/s	2.2	2.6	3.0	3.5	3.9	4.3	4.8	5.2	5.6	6.1	6.5
RATE OF DESCENT	ft/min	427	512	597	682	768	853	938	1024	1109	1194	1280

CHANGE: New chart