

STANDARD DEPARTURE CHART-INSTRUMENT

RJCC / NEW CHITOSE

SID

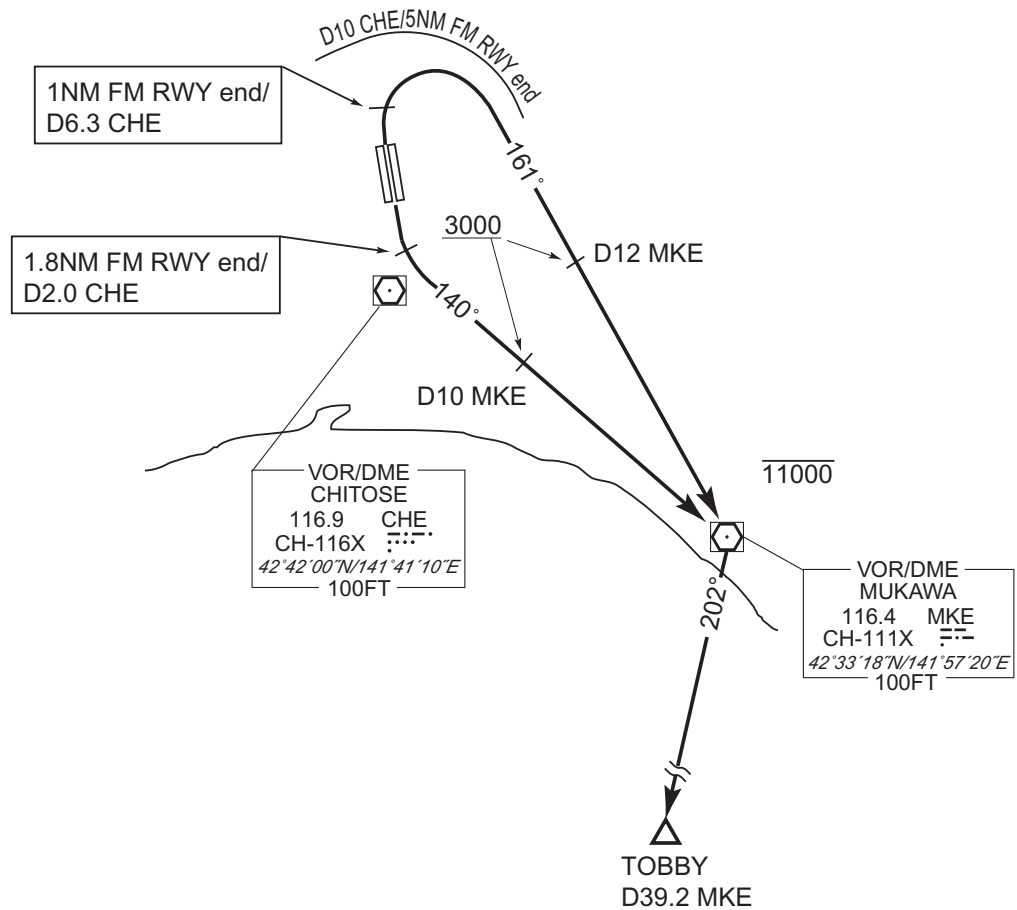
MUKAWA EIGHT DEPARTURE

RWY01L/01R: Climb RWY HDG until 1NM FM RWY end/CHE 6.3DME, turn right within CHE 10DME(5NM from RWY end), via MKE R341 to MKE VOR/DME, via MKE R202 to TOBBY.

Cross MKE R341/12DME at or above 3000FT, cross MKE VOR/DME at or below 11000FT.

RWY19R/19L: Climb RWY HDG until 1.8NM FM RWY end/CHE 2.0DME, turn left, via MKE R320 to MKE VOR/DME, via MKE R202 to TOBBY.

Cross MKE R320/10DME at or above 3000FT, cross MKE VOR/DME at or below 11000FT.



CHANGE : Description of PROC name.