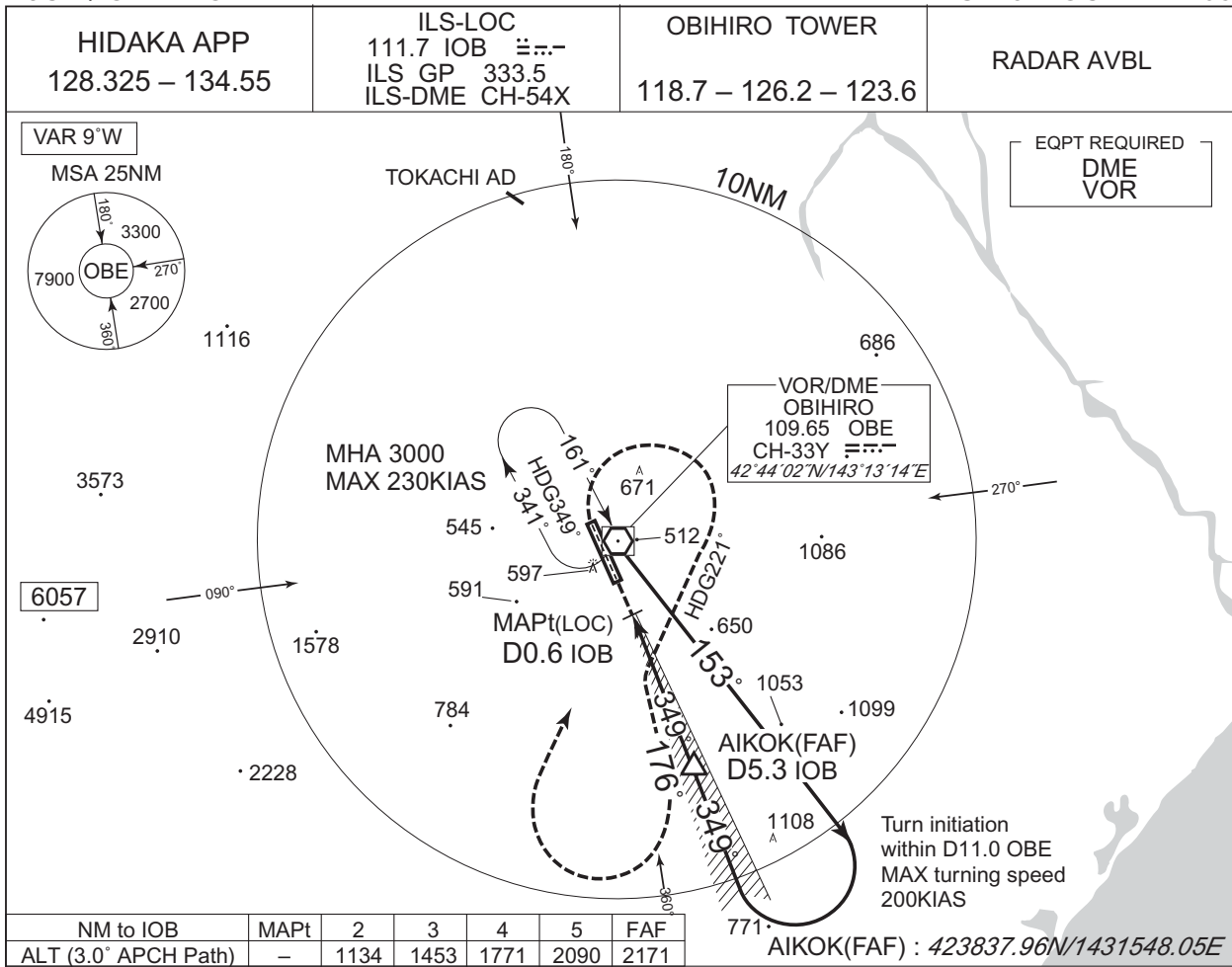


INSTRUMENT APPROACH CHART

RJCB / OBIHIRO

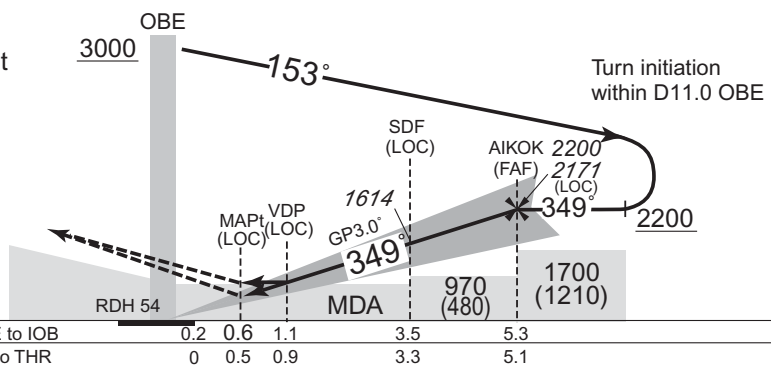
ILS Y or LOC Y RWY35



CHANGE : ATC call sign and FREQ. Description of RADAR Service. Missed APCH PROC.

MISSED APPROACH
Climb to 900FT on HDG 349°, turn right HDG 221° to intercept and proceed via OBE R176 to 3000FT, turn right, direct to OBE VOR/DME and hold.
Contact HIDAKA APP.

No turn before IOB 0.6DME.
Timing not authorized for defining the MAPt.



Missed APCH climb gradient MNM 4.0%

MINIMA		THR elev. 505		AD elev. 490		
CAT	CAT I		LOC		CIRCLING	
	DA(H)	RVR/CMV	MDA(H)	RVR/CMV	MDA(H)	VIS
A	705 (200)	550	840 (350)	900	960 (470)	1600
B				1000		
C				1050 (560)	2400	
D				1400	3200	

MINIMA with Missed APCH climb gradient of 2.5% are not established.