

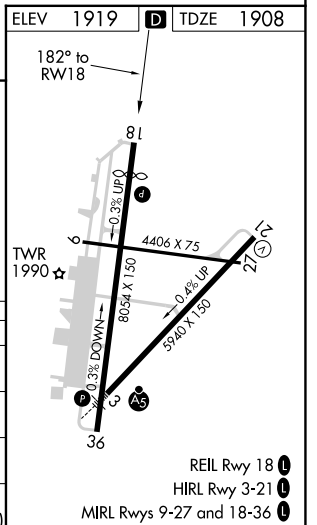
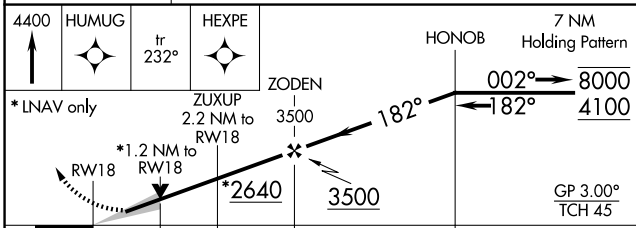
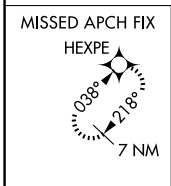
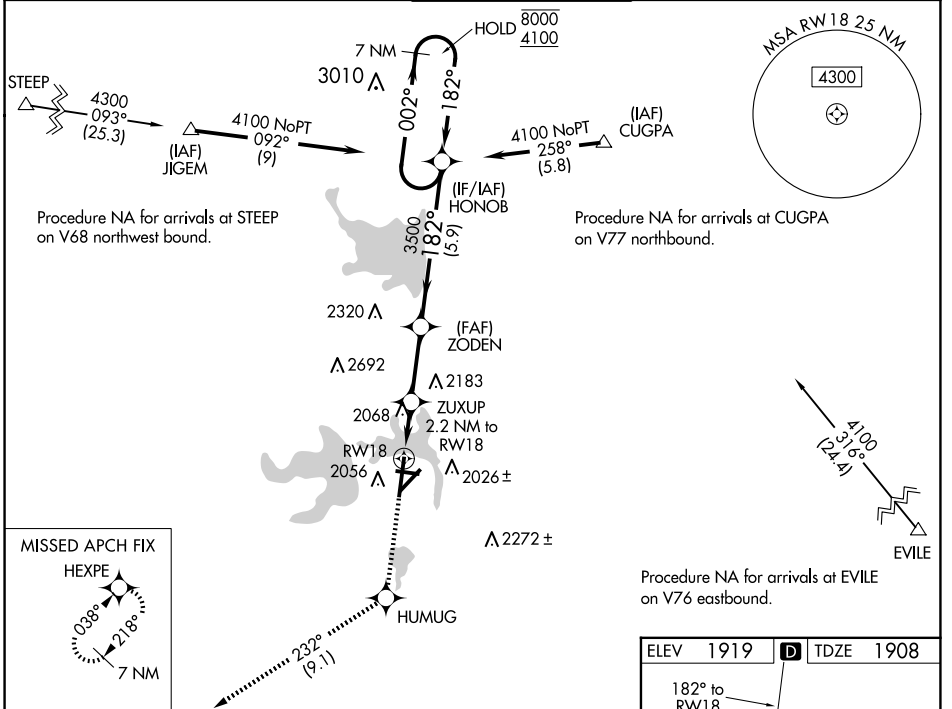
WAAS CH 93801 W18A	APP CRS 182°	Rwy Idg TDZE Apt Elev	7152 1908 1919
--	------------------------	-----------------------------	---

RNAV (GPS) RWY 18

SAN ANGELO RGNL/MATHIS FLD (SJT)

RNP APCH - GPS.		MISSED APPROACH: Climb to 4400 direct HUMUG and on track 232° to HEXPE and hold.	
<p>▼ For uncompensated Baro-VNAV systems, LNAV/VNAV NA below -8°C or above 54°C. ▲ ASR Circling NA for Cat E west of Rwy 18-36.</p>			

ATIS 128.45 319.0	SAN ANGELO APP CON ★ 125.35 354.1	MATHIS TOWER ★ 118.3(CTAF) 284.7	GND CON 121.9 348.6	UNICOM 122.95
-----------------------------	---	--	-------------------------------	-------------------------



CATEGORY	A	B	C	D	E
LPV DA		2158-¾	250 (300-¾)		
LNAV/VNAV DA		2246-1	338 (400-1)		
LNAV MDA	2340-1	432 (500-1)	2340-1½	432 (500-1½)	
CIRCLING	2360-1	2380-1	2500-1½	2700-2½	2700-2¾
	441 (500-1)	461 (500-1)	581 (600-1½)	781 (800-2½)	781 (800-2¾)

- REIL Rwy 18
- HIRL Rwy 3-21
- MIRL Rwy 9-27 and 18-36

SC-3, 20 MAR 2025 to 17 APR 2025

SC-3, 20 MAR 2025 to 17 APR 2025