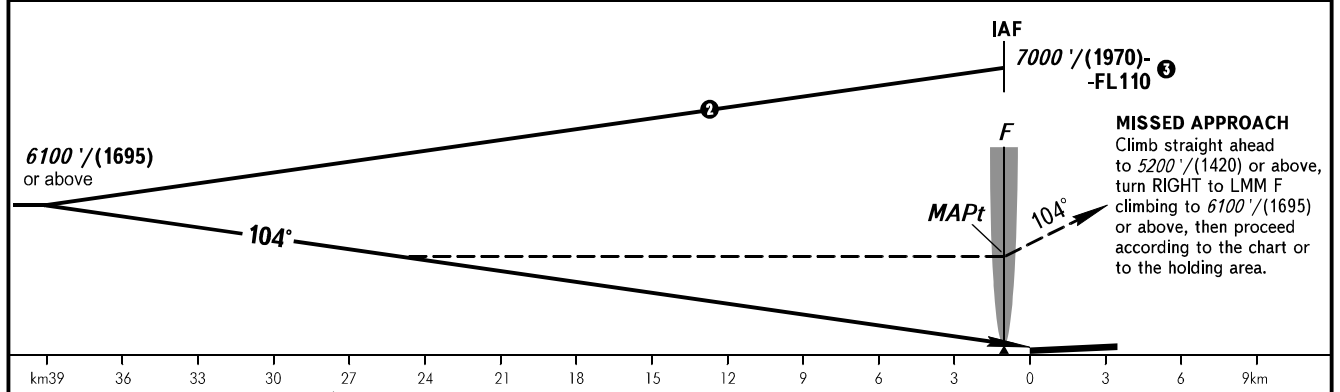
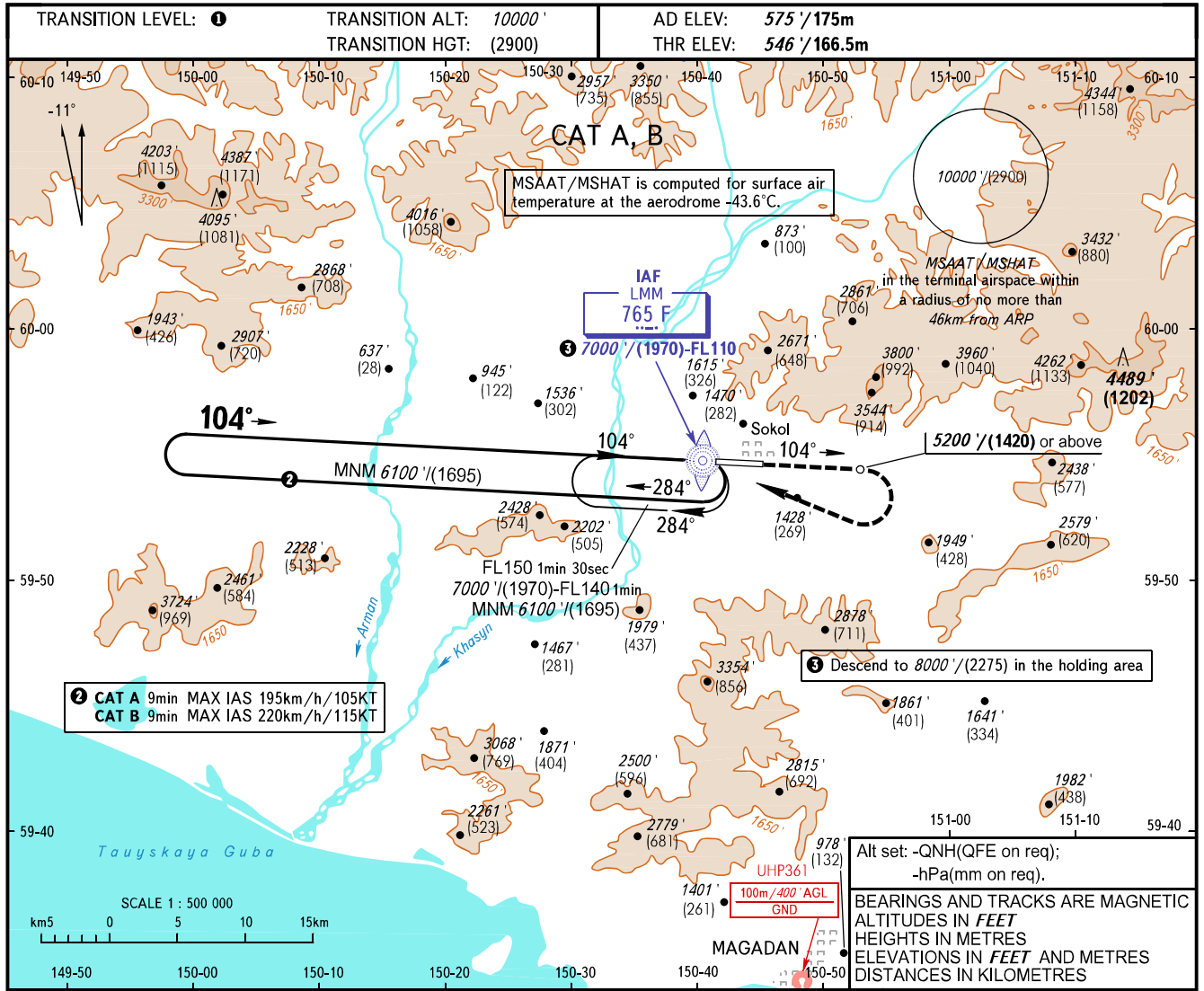


**INSTRUMENT
APPROACH
CHART - ICAO**

**MAGADAN, RUSSIA
SOKOL
NDB U RWY 10**

APPROACH	119.300
TOWER	120.800



OCA(H)	A	B	C	D
Straight-in Approach	4050' (3510') (1070)	4050' (3510') (1070)		
Circling	4050' (3510') (1070)	4050' (3510') (1070)		

1 TRANSITION LEVEL:
- FL110 when QNH is 1013 hPa (760mm mercury column) or above;
- FL120 when QNH is 977 hPa (733mm mercury column) or above, but less than 1013 hPa (760mm mercury column);
- FL130 when QNH is less than 977 hPa (733mm mercury column).

WARNING:
1. Turn before passing MAPt is PROHIBITED.
2. MAPt at LMM F.
Timing not authorized for defining MAPt.

Visual manoeuvring to the North of AD is PROHIBITED.