

APP CRS	Rwy Idg	<b>4600</b>
<b>065°</b>	TDZE	<b>331</b>
	Apt Elev	<b>331</b>

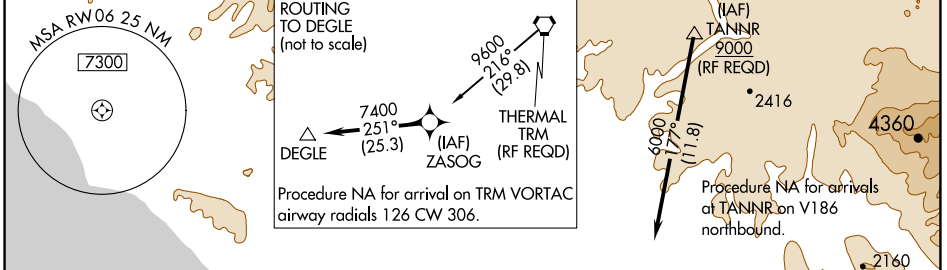
# RNAV (RNP) Z RWY 6

MC CLELLAN-PALOMAR (CRQ)

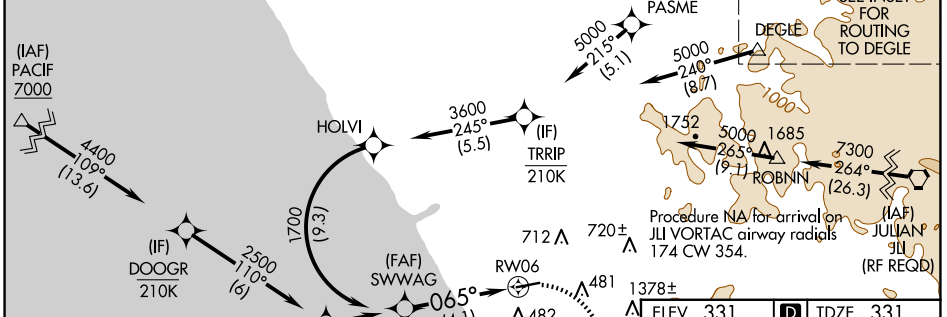
**▼** For uncompensated Baro-VNAV systems, procedure NA below 4°C (40°F) or above 54°C (130°F). GPS required.

**MISSED APPROACH:** Climbing right turn to 3000 direct TIZIE and hold, continue climb-in-hold to 3000.

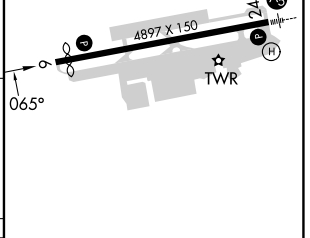
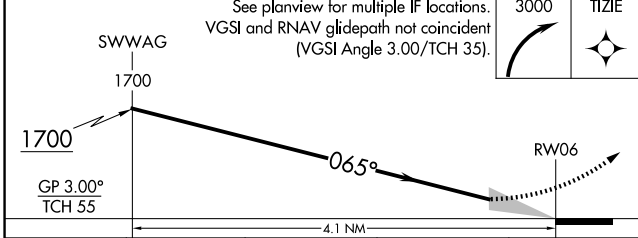
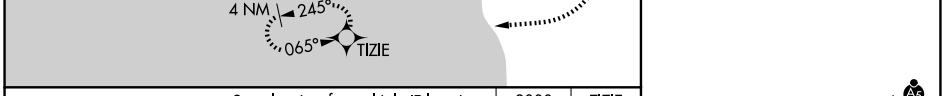
ATIS <b>120.15</b>	SOCAL APP CON <b>127.3 323.0</b>	PALOMAR TOWER ★ <b>118.6 (CTAF) 0 276.4</b>	GND CON <b>121.8</b>	CLNC DEL <b>134.85</b>
-----------------------	-------------------------------------	--	-------------------------	---------------------------



Procedure NA for arrivals at PACIF on V25-27 northwest bound and V208-458 westbound.



ELEV 331	TDZE 331
----------	----------



CATEGORY	A	B	C	D
RNP 0.30 DA		810-15%	479 (500-1%)	

**AUTHORIZATION REQUIRED**

HIRL Rwy 6-24

SW-3, 20 MAR 2025 to 17 APR 2025

SW-3, 20 MAR 2025 to 17 APR 2025