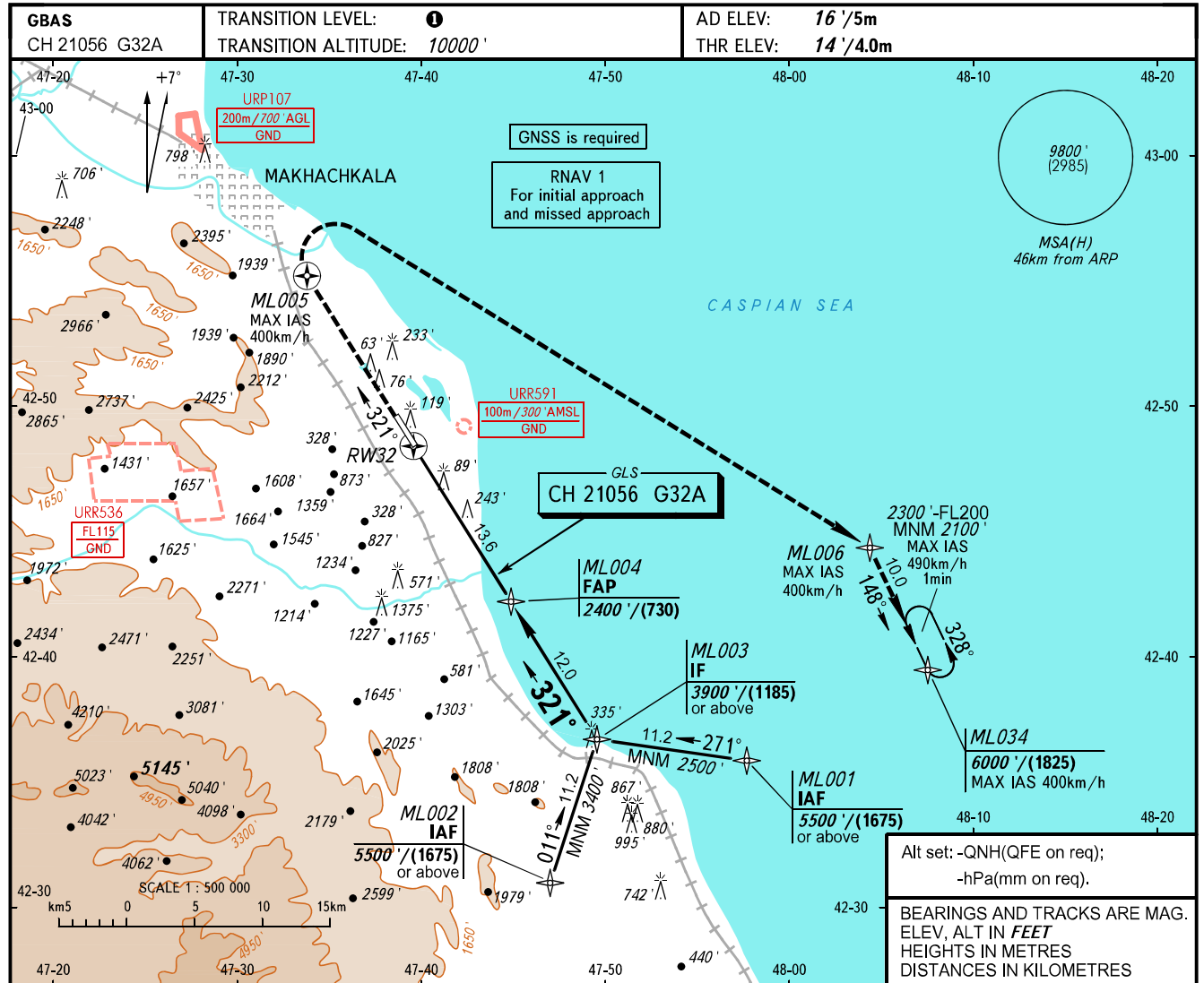


INSTRUMENT  
APPROACH  
CHART - ICAO

MAKHACHKALA, RUSSIA  
UYTASH  
GLS RWY 32

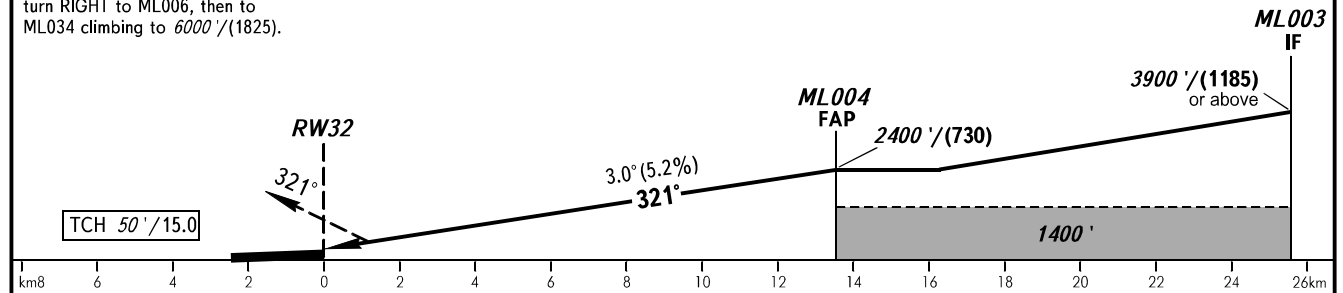
RADAR START	121.300
	121.300



Alt set: -QNH(QFE on req);  
-hPa(mm on req).

BEARINGS AND TRACKS ARE MAG.  
ELEV, ALT IN FEET  
HEIGHTS IN METRES  
DISTANCES IN KILOMETRES

**MISSED APPROACH**  
Climb on track 321° to ML005,  
turn RIGHT to ML006, then to  
ML034 climbing to 6000'/(1825).



OCA(H)		A	B	C	D
Straight-in Approach	CAT I	192' (178')	201' (188')	211' (198')	221' (208')
Circling		790' (770')	830' (810')	1720' (1700')	1870' (1860')

**1** TRANSITION LEVEL:  
- FL 110 when QNH is 1013 hPa (760mm mercury column) or above;  
- FL 120 when QNH is 977 hPa (733mm mercury column) or above,  
but less than 1013 hPa (760mm mercury column);  
- FL 130 when QNH is less than 977 hPa  
(733mm mercury column).

**WARNING**  
Visual manoeuvring west of the aerodrome  
is PROHIBITED.

GROUND SPEED	km/h	150	180	210	240	270	300	330	360	390	420	450
RATE OF DESCENT	m/s	2.2	2.6	3.0	3.5	3.9	4.3	4.8	5.2	5.6	6.1	6.5
	ft/min	427	512	597	682	768	853	938	1024	1109	1194	1280

CHANGE: New chart