

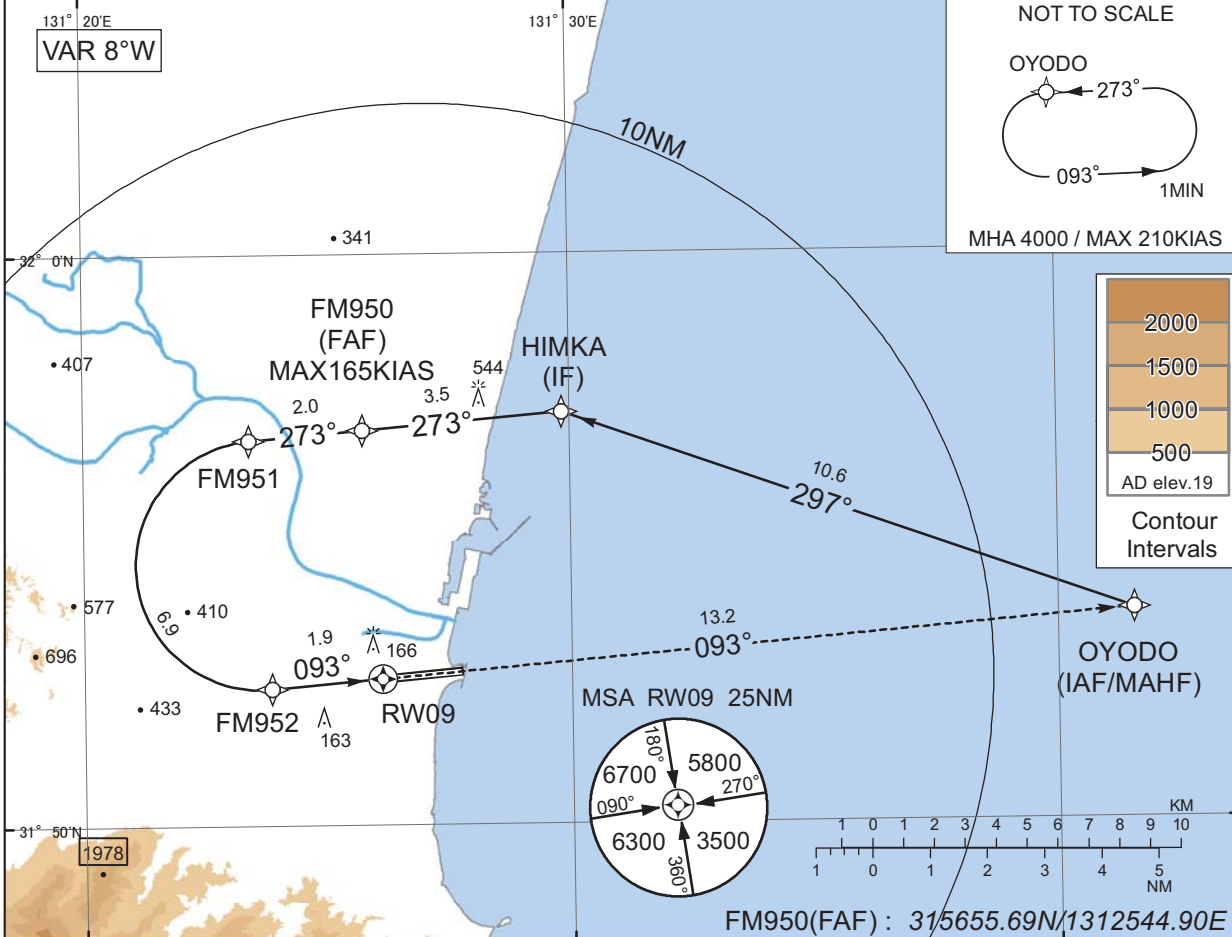
INSTRUMENT APPROACH CHART

RJFM / MIYAZAKI

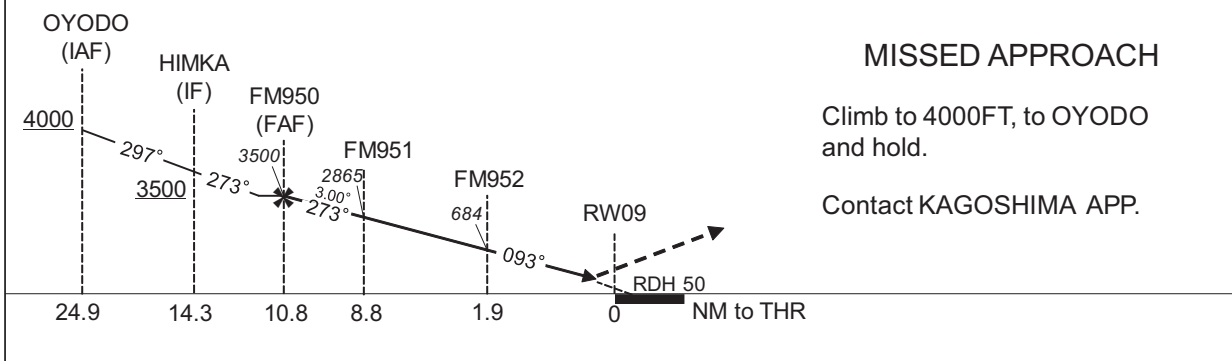
RNP Z RWY09(AR)

KAGOSHIMA APP 121.4 - 362.3 120.9 - 261.2	RNP AR RF required.	MIYAZAKI TOWER 118.3 -126.2 123.6 - 261.2	RADAR AVBL ATIS 126.8
-------------------------------------------------	------------------------	-------------------------------------------------	--------------------------

For uncompensated Baro-VNAV systems, procedure not authorized below -5°C / above 45°C



CHANGE : VAR. PROC course. HLDG pattern at OYODO.



MINIMA	THR elev. 15	AD elev. 19
CAT	RNP 0.30	
	DA(H)	CMV
A	-	-
B	-	-
C	327(312)	1400
D		1600

Authorization Required

INSTRUMENT APPROACH CHART

RJFM / MIYAZAKI

RNP Z RWY09(AR)

Coding Table

Serial Number	Path Descriptor	Waypoint Identifier	Fly Over	Course °M(°T)	Magnetic Variation	Distance (NM)	Turn Direction	Altitude (FT)	Speed (KIAS)	VPA/RDH (°/FT)	RNP Value
001	IF	OYODO	-	-	-7.5	-	-	+4000	-	-	-
002	TF	HIMKA	-	297 (289.7)	-7.5	10.6	-	+3500	-	-	1.0
003	TF	FM950	-	273 (265.2)	-7.5	3.5	-	3500	-165	-	1.0
004	TF	FM951	-	273 (265.2)	-7.5	2.0	-	2865	-	-3.00	0.3
005	RF Center: FMRF1 r=2.18NM	FM952	-	-	-7.5	6.9	L	684	-	-3.00	0.3
006	TF	RW09	Y	093 (085.1)	-7.5	1.9	-	65	-	-3.00/50	0.3
007	TF	OYODO	-	093 (085.1)	-7.5	13.2	-	4000	-	-	1.0

Path	Waypoint Identifier	Inbound Course °M(°T)	Magnetic Variation	Outbound Time (MIN)	Turn Direction	Minimum Altitude (FT)	Maximum Altitude (FT)	Speed (KIAS)	RNP Value
Hold	OYODO	273 (265.9)	-7.5	1.0 (-14000)	L	4000	FL140	-210(-14000)	1.0

Waypoint Coordinates

Waypoint Identifier	Coordinates	RF Arc Center Identifier	Coordinates
HIMKA	315713.28N / 1312950.79E	FMRF1	315435.02N / 1312337.63E
FM950	315655.69N / 1312544.90E		
FM951	315645.60N / 1312324.68E		
FM952	315224.44N / 1312350.57E		
RW09	315234.26N / 1312607.02E		
OYODO	315340.52N / 1314134.32E		

CHANGE : PROC course. VAR. HLDG pattern at OYODO added.