

VOR/DME JAC <b>115.4</b> Chan <b>101</b>	APP CRS <b>193°</b>	Rwy Idg TDZE Apt Elev	<b>6300</b> <b>6451</b> <b>6451</b>
--	------------------------	-----------------------------	---

# VOR RWY 19

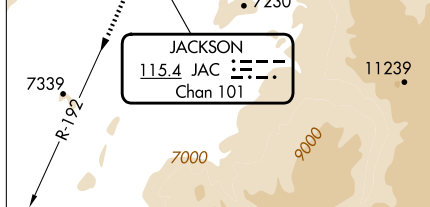
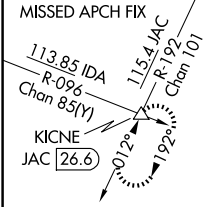
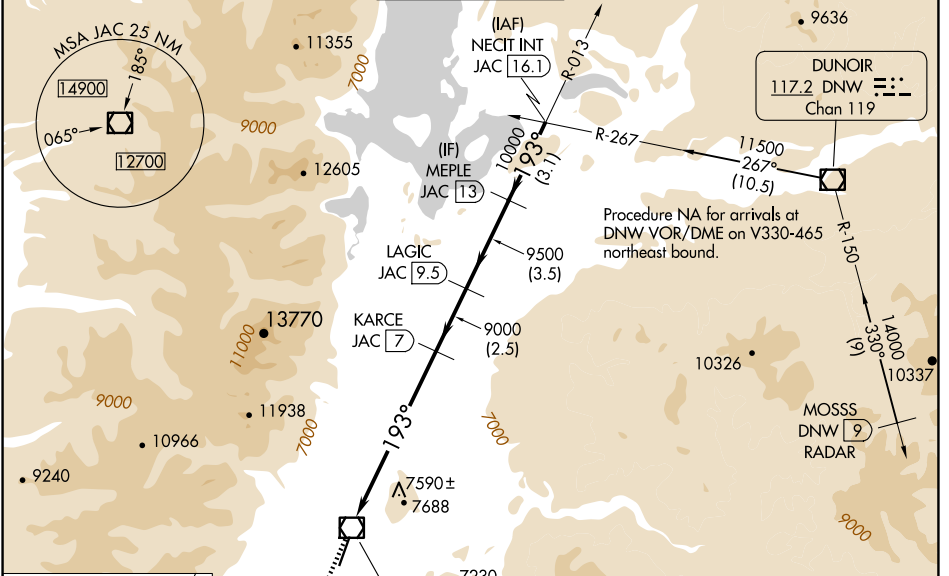
## JACKSON HOLE (JAC)

DME required. RADAR required for procedure entry at MOSS.

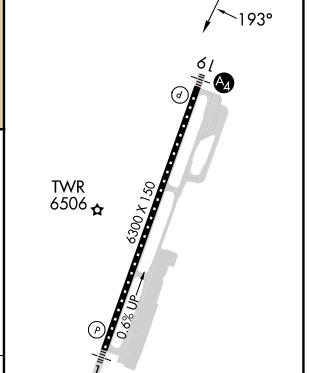
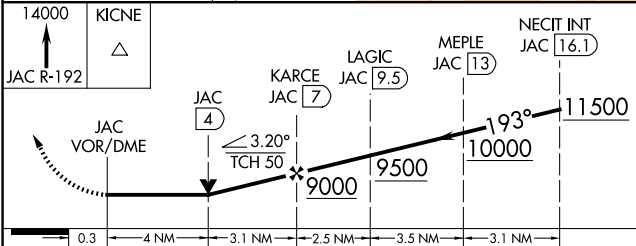
**⚠** Circling NA east of Rwy 1-19. Rwy 19 helicopter visibility reduction below RVR 4000 NA. Circling NA for Cat D.  
**⚠** Inop table does not apply to S-19 Cat C/D.

MALS **⚠** MISSED APPROACH: Climb to 14000 on JAC VOR/DME R-192 to KICNE INT/26.6 DME and hold, continue climb-in-hold to 14000.

D-ATIS <b>120.625</b>	SALT LAKE CENTER <b>133.25 285.6</b>	JACKSON TOWER* <b>118.075 (CTAF)</b>	GND CON <b>124.55</b>	UNICOM <b>122.95</b>
--------------------------	---	---	--------------------------	-------------------------



ELEV 6451	TDZE 6451
-----------	-----------



CATEGORY	A	B	C	D
S-19	7900/55 1449 (1500-1)	7900-1½ 1449 (1500-1½)	7900-3 1449 (1500-3)	
<b>C</b> CIRCLING	7900-1½ 1449 (1500-1½)	7900-1½ 1449 (1500-1½)	7900-3 1449 (1500-3)	NA

CL Rwy 1-19 **⚠**  
HIRL Rwy 1-19 **⚠**

NW-1, 20 MAR 2025 to 17 APR 2025

NW-1, 20 MAR 2025 to 17 APR 2025