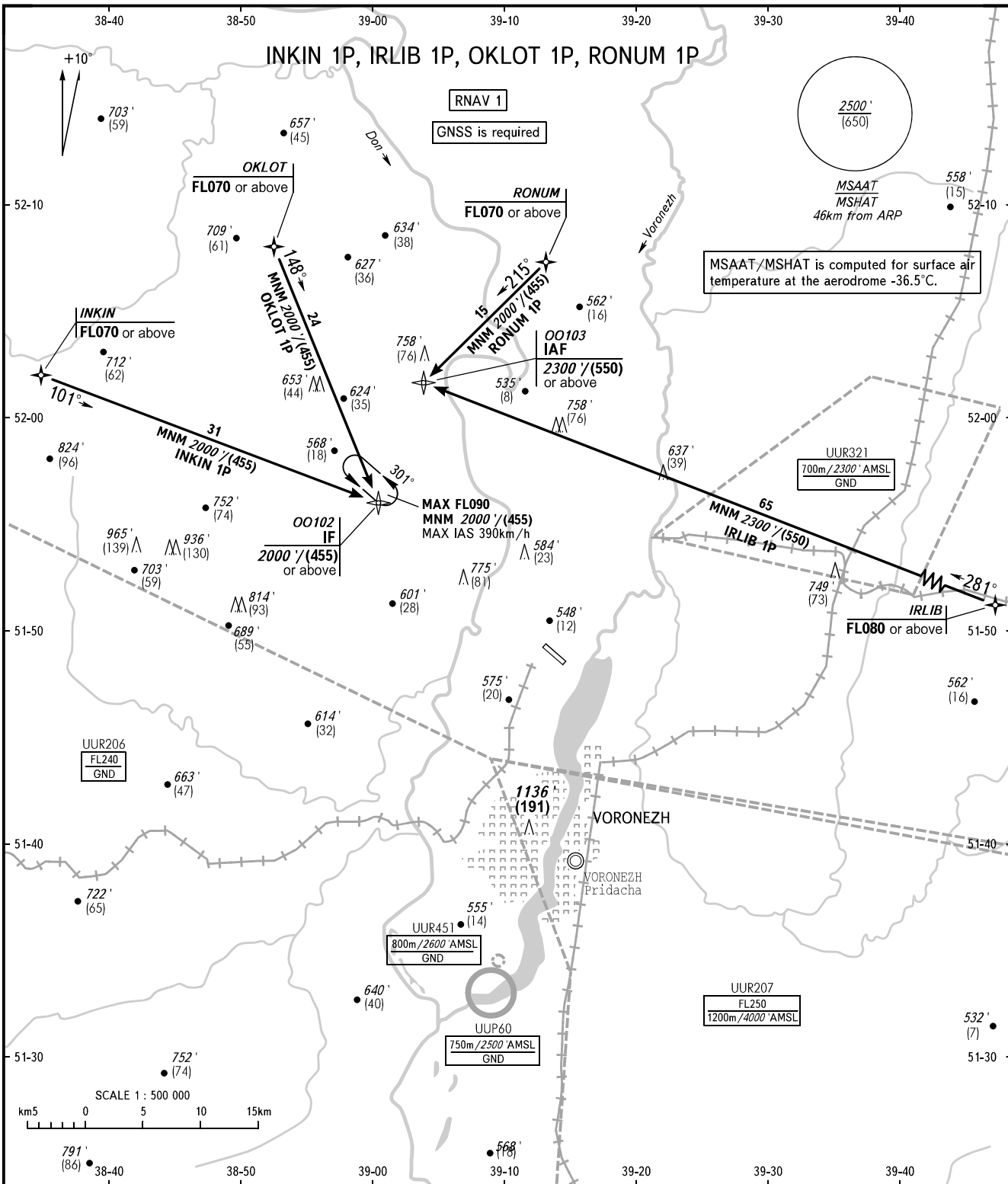


STANDARD ARRIVAL CHART
INSTRUMENT (STAR) - ICAO

VORONEZH, RUSSIA
CHERTOVITSKOYE
RNAV RWY 12

TRANSITION
LEVEL: 1



TOWER 118.300

- 1 TRANSITION LEVEL:
- FL060 when QNH is 1013 hPa (760mm mercury column) or above;
 - FL070 when QNH is 977 hPa (733mm mercury column) or above, but less than 1013 hPa (760mm mercury column);
 - FL080 when QNH is less than 977 hPa (733mm mercury column).

BEARINGS AND TRACKS ARE MAGNETIC
ALTITUDES IN FEET
HEIGHTS IN METRES
ELEVATIONS IN FEET AND METRES
DISTANCES IN KILOMETRES

Alt set: -QNH(QFE on req);
-hPa(mm on req).

CHANGE: New chart