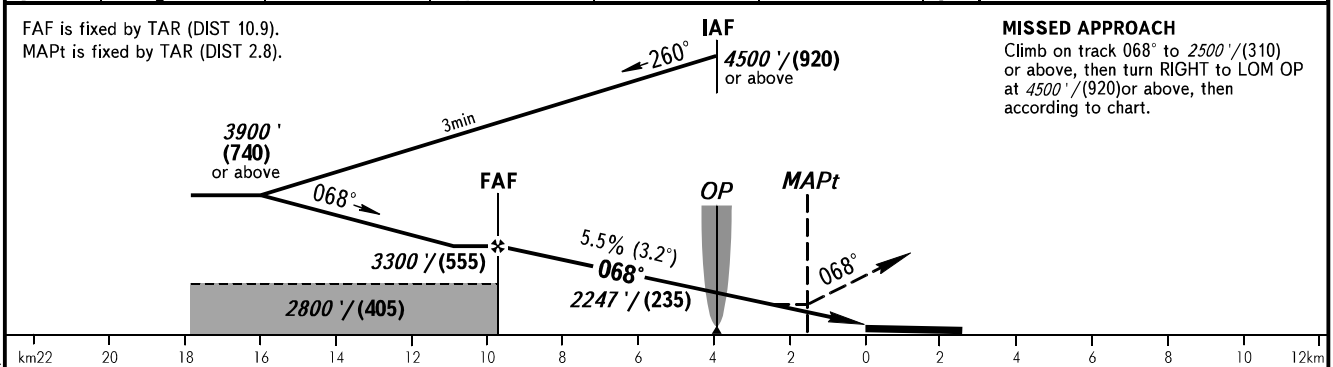
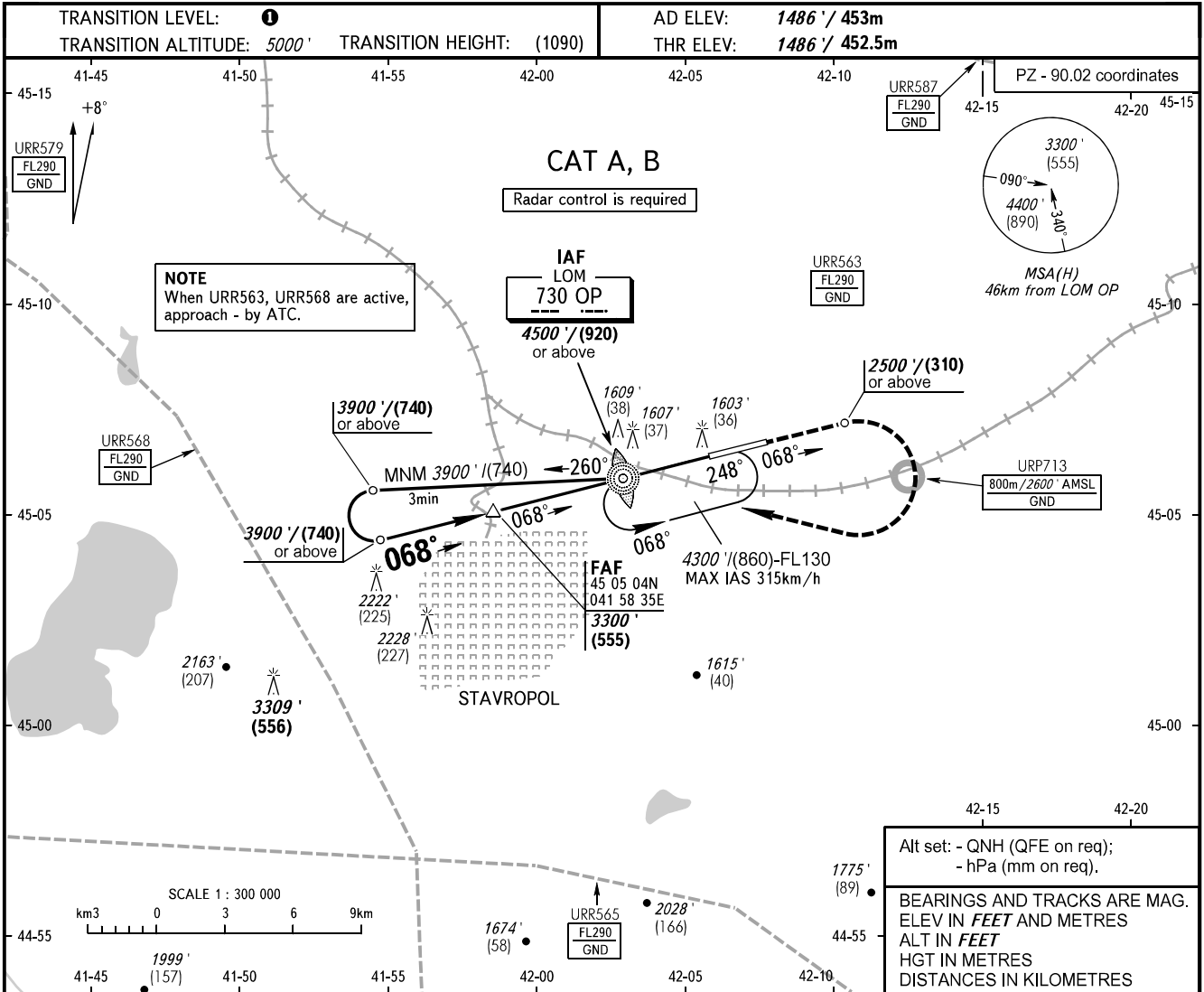


**INSTRUMENT  
APPROACH  
CHART - ICAO**

**STAVROPOL, RUSSIA  
SHPAKOVSKOYE  
NDB Y RWY 07**

TOWER **120.900**



OCA(H)		A	B	C	D	① TRANSITION LEVEL:					
Straight-in Approach		1860' (370') (115)	1860' (370') (115)			- FLO60 when QNH is 1013 hPa (760mm mercury column) or above;					
						- FLO70 when QNH is 977 hPa (733mm mercury column) or above, but less than 1013 hPa (760mm mercury column);					
Circling		1940' (450') (140)	1980' (500') (155)			- FLO80 when QNH is less than 977 hPa (733mm mercury column).					
GROUND SPEED		km/h	150	180	210	240	270	300	330	360	390
FAF - MAPt 8080m		min:sec	3:13	2:41	2:18	2:01	1:47	1:36	1:28	1:20	1:13
RATE OF DESCENT		m/s	2.3	2.8	3.2	3.7	4.1	4.6	5.1	5.5	6.0
		ft/min	451	541	632	722	812	902	992	1082	1173

CHANGE: Limiting bearing line withdrawn, URP713