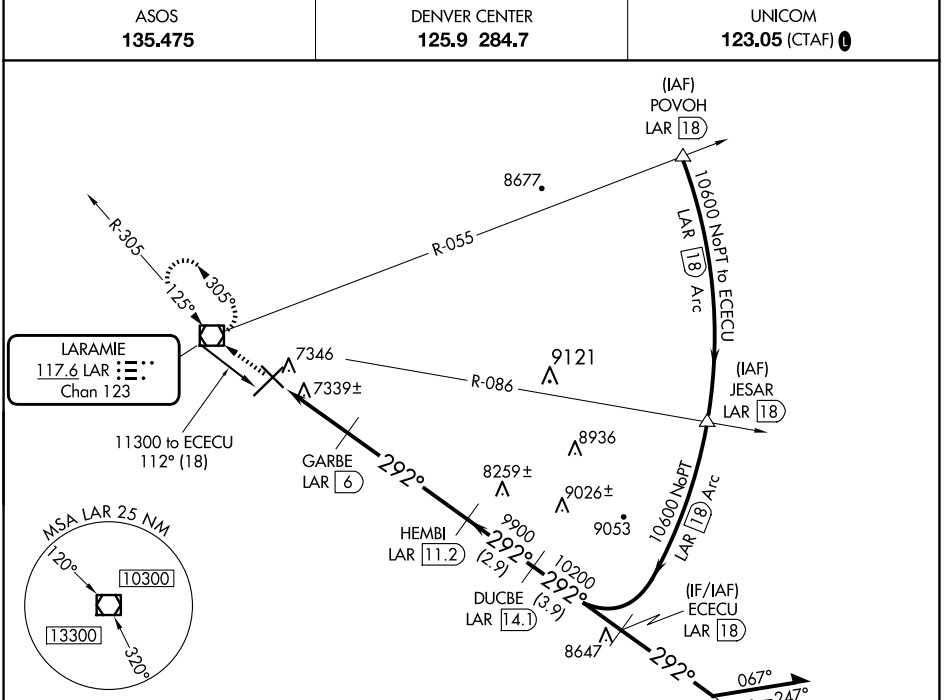


VOR/DME LAR 117.6 Chan 123	APP CRS 292°	Rwy Idg TDZE Apt Elev	6301 7278 7284
---	------------------------	-----------------------------	---

VOR/DME RWY 30

LARAMIE RGNL (L.A.R.)

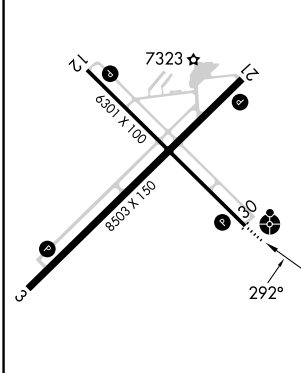
	ASOS 135.475		DENVER CENTER 125.9 284.7		UNICOM 123.05 (CTAF) 0
	MISSED APPROACH: Climb to 9600 direct LAR VOR/DME and hold, continue climb-in-hold to 9600.				



NW-1, 20 MAR 2025 to 17 APR 2025

NW-1, 20 MAR 2025 to 17 APR 2025

ELEV 7284	D	TDZE 7278
-----------	----------	-----------



9600	LAR	ECECU LAR 18	Remain within 10 NM
↑			
		HEMBI LAR 11.2	
		DUCBE LAR 14.1	
		GARBE LAR 6	
		LAR 4	
		LAR 3.1	
		8220	
		9900	
		10200	
		10600	
		10600	
		112°	
		292°	
		292°	
		10600	
		3.00° TCH 41	
		0.9	
		2 NM	
		5.2 NM	
		2.9 NM	
		3.9 NM	

CATEGORY	A	B	C	D
S-30	7600-¾ 322 (400-¾)			7600-1 322 (400-1)
CIRCLING	7660-1 376 (400-1)	7760-1 476 (500-1)	7880-1½ 596 (600-1½)	7920-2 636 (700-2)