

CORPUS CHRISTI, TEXAS

# VOR/DME or TACAN Y RWY 31L

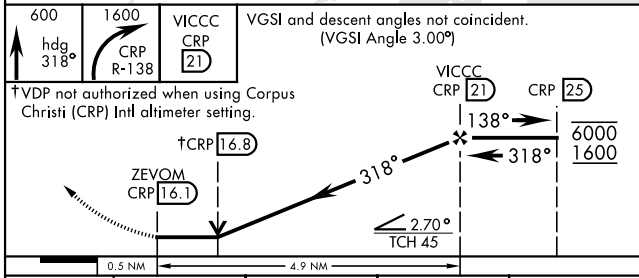
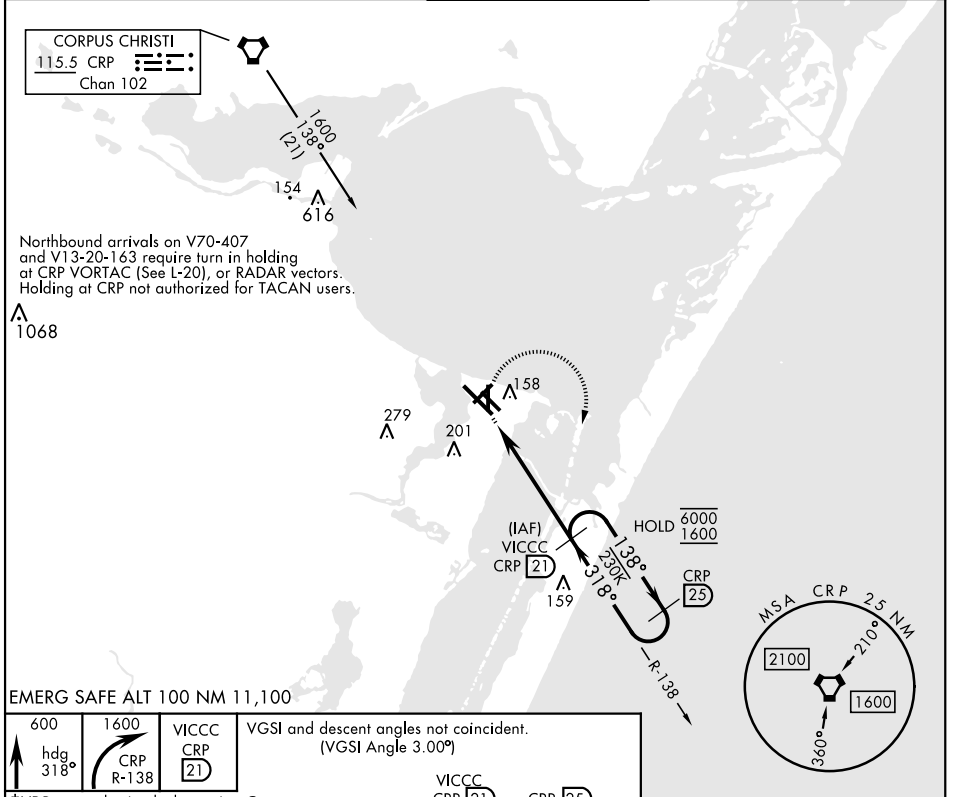
VORTAC CRP <b>115.5</b> Chan <b>102</b>	APCH CRS <b>318°</b>	Rwy Idg <b>8001</b> TDZE <b>17</b> Arprt Elev <b>18</b>
---	-------------------------	---

[USN]

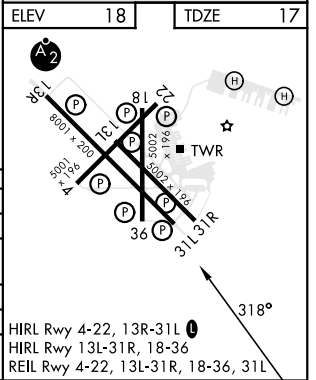
CORPUS CHRISTI NAS (TRUAX FLD) (KNGP)

When local altimeter setting not received, use Corpus Christi (CRP) Intl altimeter setting. MISSED APPROACH: Climb to 600 hdg 318°, then climbing right turn to 1600 to intercept CRP VORTAC R-138 to VICCC and hold.

ATIS ★ <b>127.9 290.9</b>	APP CON <b>128.675 343.75</b>	NAVY CORPUS TOWER ★ <b>134.85 340.2</b>	GND CON <b>118.7 257.85</b>	CLNC DEL <b>314.3</b>	ASR/ PAR
------------------------------	----------------------------------	--	--------------------------------	--------------------------	-------------



CATEGORY	A	B	C	D
S-31L	420-1 403 (500-1)	420-1½ 403 (500-1½)		
CIRCLING	442 (500-1)	462 (500-1)	502 (600-1½)	562 (600-2)
CORPUS CHRISTI (CRP) INTL ALTIMETER SETTING				
S-31L	440-1 423 (500-1)	440-1¼ 423 (500-1¼)		
CIRCLING	500-1 482 (500-1)	522 (600-1½)	602 (700-2)	



CORPUS CHRISTI, TEXAS 27° 42' N-97° 17' W CORPUS CHRISTI NAS (TRUAX FLD) (KNGP)

Amdt 2 30NOV23

# VOR/DME or TACAN Y RWY 31L

SC-3, 20 MAR 2025 to 17 APR 2025

SC-3, 20 MAR 2025 to 17 APR 2025