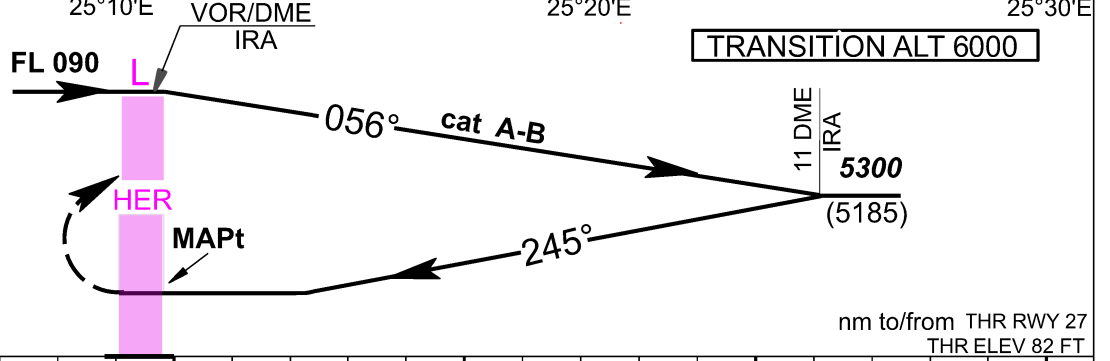


MISSED APPROACH
Turn right climbing on BRG 358°. At 17 DME IRA or at 6000ft, whichever comes earlier, turn right (Max IAS 185 KT) and proceed to HER FL 090 and hold. Climb gradient 3.6% (219 FT/NM). (See NOTE)*



OCA (H)	A	B
Straight-in Approach	Not Authorized	
Circling North of RWY	1100 (990)	

5 * **NOTE:** Minimum OCA (H) for aircraft utilising a 2.5% missed approach climb gradient.

OCA (H)	A	B
Straight-in Approach	Not Authorized	
Circling North of RWY	2600 (2490)	

CHANGES: MAG VAR: OCH