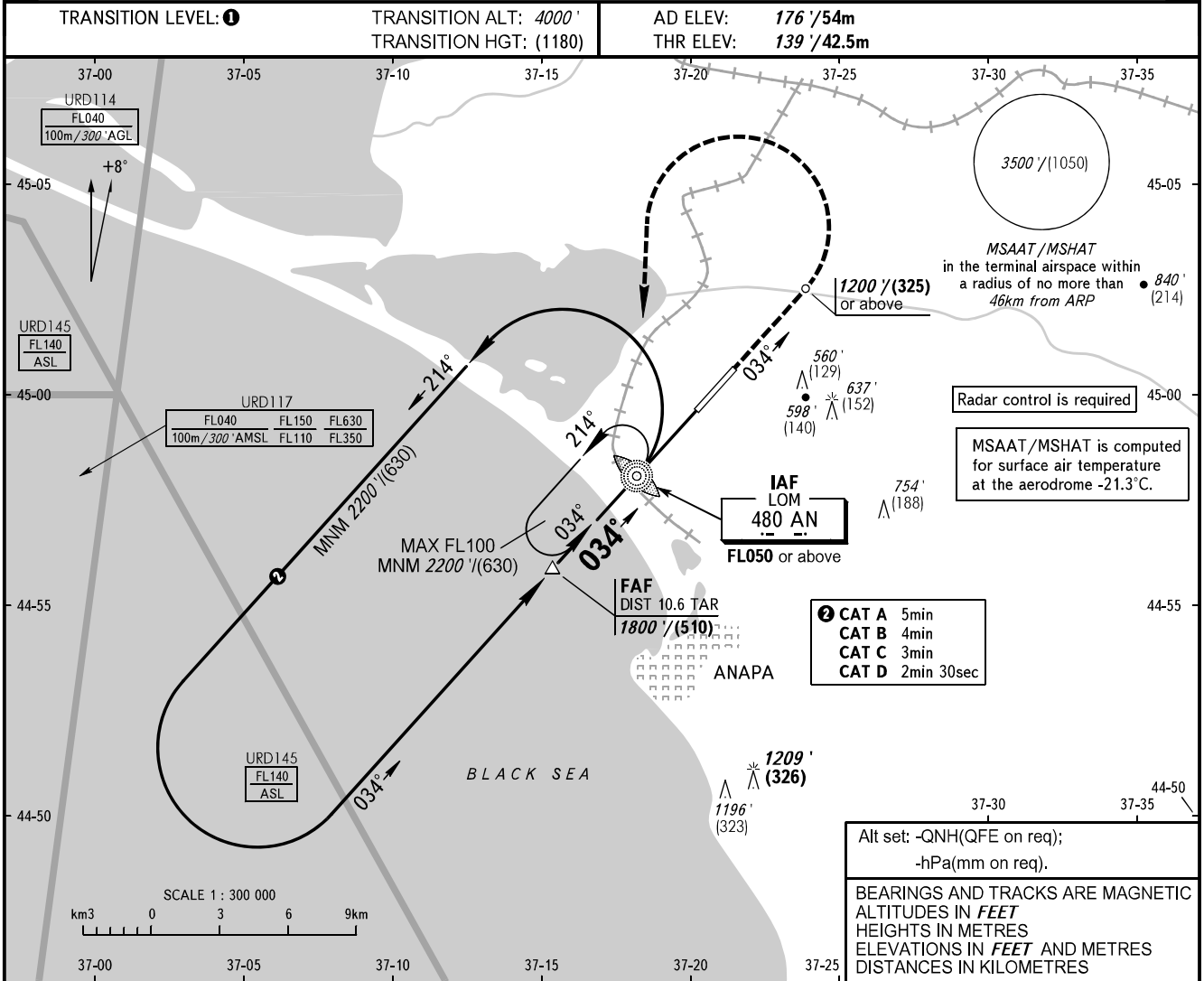


**INSTRUMENT  
APPROACH  
CHART - ICAO**

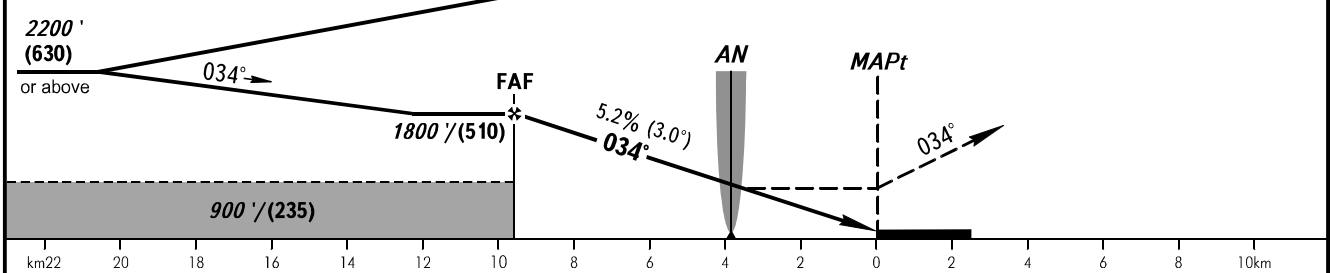
ANAPA RADAR 118.700  
ANAPA TOWER 119.800

**ANAPA, RUSSIA**  
VITYAZEVO  
NDB X RWY 03



FAF is fixed by TAR - DIST 10.6km.

**MISSSED APPROACH**  
Climb straight ahead to 1200'/(325) or above, turn LEFT to LOM AN, climbing to 2200'/(630) or above.



OCA(H)		A	B	C	D						
Straight-in Approach		780' (640') (195)	780' (640') (195)	780' (640') (195)	780' (640') (195)						
Circling		860' (680') (210)	940' (760') (235)	1040' (860') (265)	1150' (980') (300)						
GROUND SPEED	km/h	150	180	210	240	270	300	330	360	390	
	kt	81	97	113	130	146	162	178	194	211	
RATE OF DESCENT	m/s	2.2	2.6	3.0	3.5	3.9	4.3	4.8	5.2	5.6	
	ft/min	427	512	597	682	768	853	938	1024	1109	
FAF-MAPt 9400m		min:sec	3:47	3:09	2:42	2:22	2:06	1:53	1:43	1:34	1:27

**1** TRANSITION LEVEL:  
- FL050 when QNH is 1013 hPa (760mm mercury column) or above;  
- FL060 when QNH is 977 hPa (733mm mercury column) or above, but less than 1013 hPa (760mm mercury column);  
- FL070 when QNH is less than 977 hPa (733mm mercury column).

**WARNING**  
Turn before passing MAPt is PROHIBITED.

CHANGE: URD145