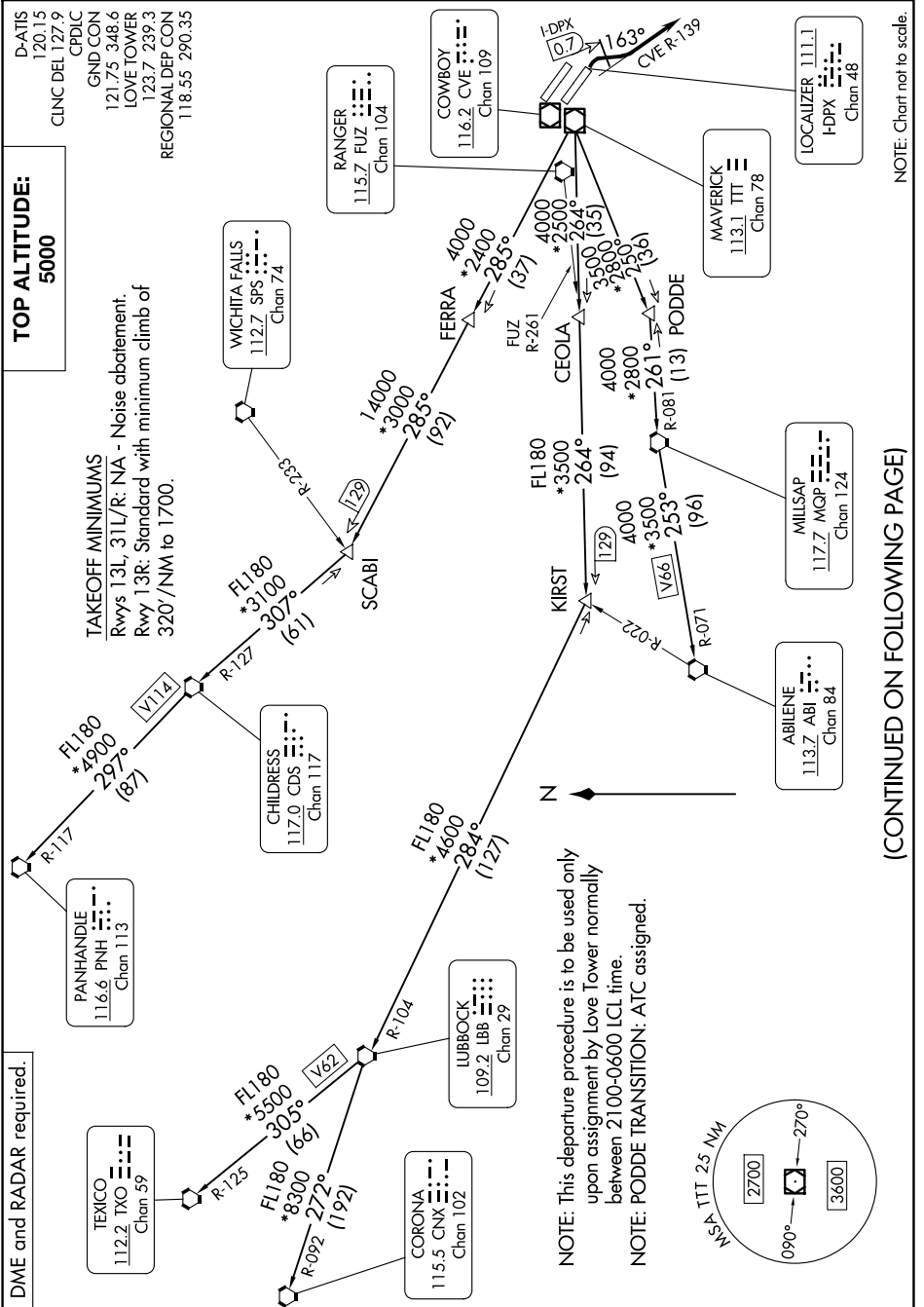


# LOVE SEVEN DEPARTURE

SC-2, 20 MAR 2025 to 17 APR 2025



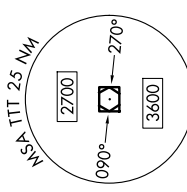
**TOP ALTITUDE:**  
5000

DME and RADAR required.

**TAKEOFF MINIMUMS**  
Rwys 13L, 31L/R: NA - Noise abatement.  
Rwy 13R: Standard with minimum climb of 320'/NM to 1700.

D-ATIS 120.15  
CLNC DEL 127.9  
CPDIC  
GND CON 121.75 348.6  
LOVE TOWER 123.7 239.3  
REGIONAL DEP CON 118.55 290.35

NOTE: This departure procedure is to be used only upon assignment by Love Tower normally between 2100-0600 LCL time.  
NOTE: PODDE TRANSITION: ATC assigned.



(CONTINUED ON FOLLOWING PAGE)

NOTE: Chart not to scale.

SC-2, 20 MAR 2025 to 17 APR 2025

# LOVE SEVEN DEPARTURE