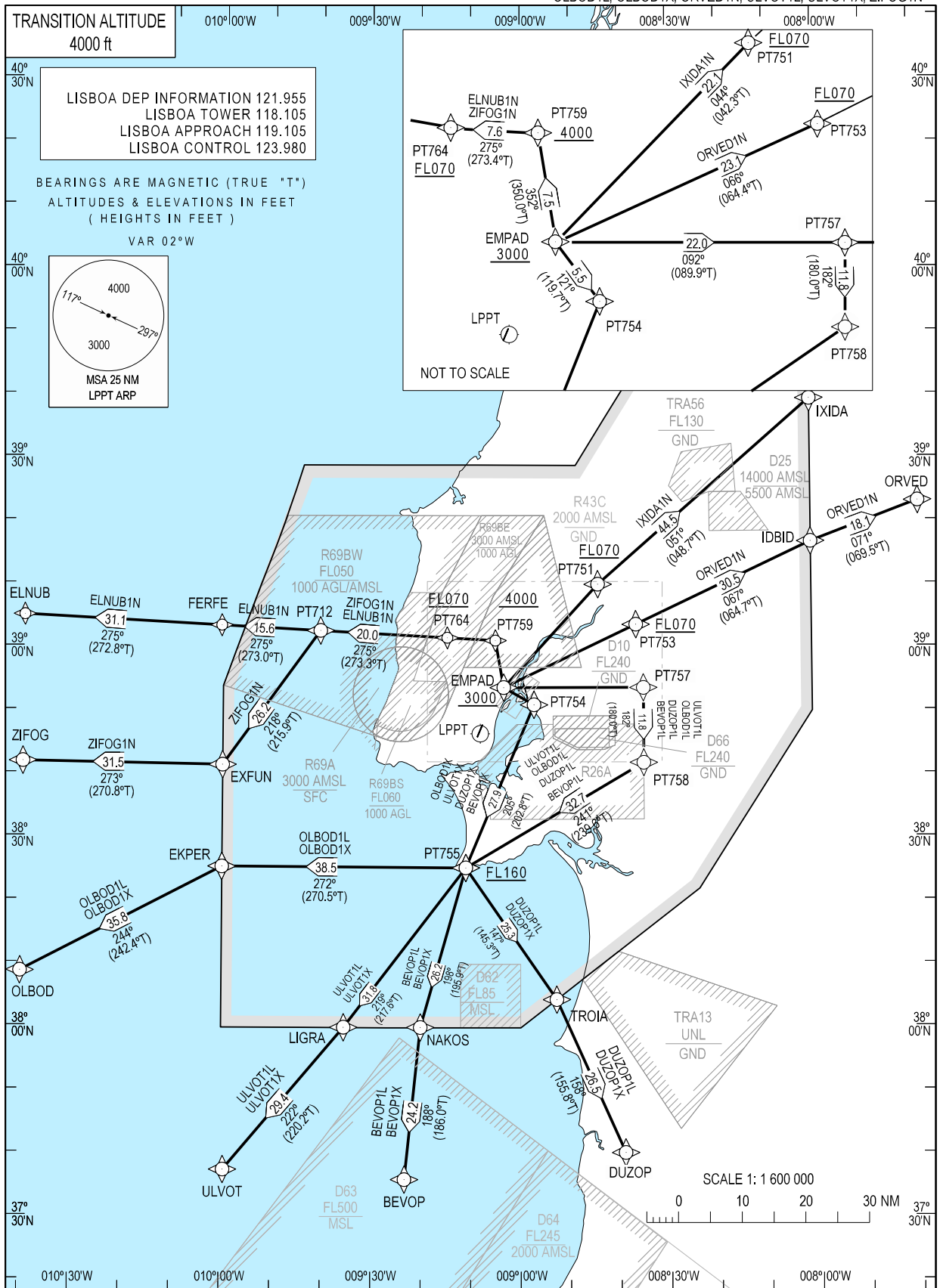


STANDARD DEPARTURE CHART - INSTRUMENT (SID) - ICAO

LISBOA, Humberto Delgado (LPPT)

RNAV Rwy 02

BEVOP1L, BEVOP1X, DUZOP1L, DUZOP1X, ELNUB1N, IXIDA1N, OLBOD1L, OLBOD1X, ORVED1N, ULVOT1L, ULVOT1X, ZIFOG1N



LISBOA SID RNAV1 BEVOP1L (RWY 02)										
Path Terminator	Waypoint			Course/Track MAG (True)	Dist NM	Turn Direction	Constraints		Navigation Specification	Remarks
	Identifier	Flyover	Coordinates				Level	Speed		
CF	EMPAD	N	385344.41N 0090318.84W	032 (029.8)	-	-	+3000 ft	-	RNAV 1	SID Available only under request with Lisbon Tower. Please advise Lisbon Delivery (118.955) when requesting enroute clearance. After departure climb FL100. Contact Lisboa Approach when passing 1000 ft QNH mentioning only the call sign and passing altitude on 119.105 MHz, or other frequency as announced by ATIS departure. If unable to comply with Level Constraints advise ATC. Pending on Military activity.
TF	PT757	N	385342.55N 0083505.38W	092 (089.9)	22.0353	-	-	-	RNAV 1	
TF	PT758	N	384152.11N 0083504.60W	182 (180.0)	11.8292	-	-	-	RNAV 1	
TF	PT755	N	382514.44N 0091058.04W	241 (239.6)	32.6874	-	+FL160	-	RNAV 1	
TF	NAKOS	N	380000.00N 0092004.18W	198 (195.9)	26.2143	-	-	-	RNAV 1	
TF	BEVOP	N	373556.58N 0092314.73W	188 (186.0)	24.1609	-	-	-	RNAV 1	

Designator	Route	After Take-off		Remarks
		Climb to ALT/FL	Contact	
BEVOP1L	After departure proceed to EMPAD - PT757 - PT758 - PT755 - NAKOS - BEVOP	FL100	Contact Lisboa Approach when passing 1000 ft QNH mentioning only the call sign and passing altitude on 119.105 MHz, or other frequency as announced by ATIS departure.	SID Available only under request with Lisbon Tower. Please advise Lisbon Delivery (118.955) when requesting enroute clearance. If unable to comply with Level Constraints advise ATC. Pending on Military activity.

LISBOA SID RNAV1 BEVOP1X (RWY 02)										
Path Terminator	Waypoint			Course/Track MAG (True)	Dist NM	Turn Direction	Constraints		Navigation Specification	Remarks
	Identifier	Flyover	Coordinates				Level	Speed		
CF	EMPAD	N	385344.41N 0090318.84W	032 (029.8)	-	-	+3000 ft	-	RNAV 1	After departure climb FL100. Contact Lisboa Approach when passing 1000 ft QNH mentioning only the call sign and passing altitude on 119.105 MHz, or other frequency as announced by ATIS departure. If unable to comply with Level Constraints advise ATC. Pending on Military activity.
TF	PT754	N	385100.84N 0085711.73W	121 (119.7)	5.5000	-	-	-	RNAV 1	
TF	PT755	N	382514.44N 0091058.04W	205 (202.8)	27.9173	-	+FL160	-	RNAV 1	
TF	NAKOS	N	380000.00N 0092004.18W	198 (195.9)	26.2143	-	-	-	RNAV 1	
TF	BEVOP	N	373556.58N 0092314.73W	188 (186.0)	24.1609	-	-	-	RNAV 1	

Designator	Route	After Take-off		Remarks
		Climb to ALT/FL	Contact	
BEVOP1X	After departure proceed to EMPAD - PT754 - PT755 - NAKOS - BEVOP	FL100	Contact Lisboa Approach when passing 1000 ft QNH mentioning only the call sign and passing altitude on 119.105 MHz, or other frequency as announced by ATIS departure.	If unable to comply with Level Constraints advise ATC. Pending on Military activity.

LISBOA SID RNAV1 DUZOP1L (RWY 02)										
Path Terminator	Waypoint			Course/Track MAG (True)	Dist NM	Turn Direction	Constraints		Navigation Specification	Remarks
	Identifier	Flyover	Coordinates				Level	Speed		
CF	EMPAD	N	385344.41N 0090318.84W	032 (029.8)	-	-	+3000 ft	-	RNAV 1	SID Available only under request with Lisbon Tower. Please advise Lisbon Delivery (118.955) when requesting enroute clearance. After departure climb FL100. Contact Lisboa Approach when passing 1000 ft QNH mentioning only the callsign and passing altitude on 119.105 MHz, or other frequency as announced by ATIS departure. If unable to comply with Level Constraints advise ATC.
TF	PT757	N	385342.55N 0083505.38W	092 (089.9)	22.0353	-	-	-	RNAV 1	
TF	PT758	N	384152.11N 0083504.60W	182 (180.0)	11.8292	-	-	-	RNAV 1	
TF	PT755	N	382514.44N 0091058.04W	241 (239.6)	32.6874	-	+FL160	-	RNAV 1	
TF	TROIA	N	380423.71N 0085244.95W	147 (145.3)	25.2899	-	-	-	RNAV 1	
TF	DUZOP	N	374011.24N 0083905.64W	158 (155.8)	26.4876	-	-	-	RNAV 1	

Designator	Route	After Take-off		Remarks
		Climb to ALT/FL	Contact	
DUZOP1L	After departure proceed to EMPAD - PT757 - PT758 - PT755 - TROIA - DUZOP	FL100	Contact Lisboa Approach when passing 1000 ft QNH mentioning only the call sign and passing altitude on 119.105 MHz, or other frequency as announced by ATIS departure.	SID Available only under request with Lisbon Tower. Please advise Lisbon Delivery (118.955) when requesting enroute clearance. If unable to comply with Level Constraints advise ATC.

LISBOA SID RNAV1 DUZOP1X (RWY 02)										
Path Terminator	Waypoint			Course/Track MAG (True)	Dist NM	Turn Direction	Constraints		Navigation Specification	Remarks
	Identifier	Flyover	Coordinates				Level	Speed		
CF	EMPAD	N	385344.41N 0090318.84W	032 (029.8)	-	-	+3000FT	-	RNAV 1	After departure climb FL100. Contact Lisboa Approach when passing 1000 ft QNH mentioning only the callsign and passing altitude on 119.105 MHz, or other frequency as announced by ATIS departure. If unable to comply with Level Constraints advise ATC.
TF	PT754	N	385100.84N 0085711.73W	121 (119.7)	5.5000	-	-	-	RNAV 1	
TF	PT755	N	382514.44N 0091058.04W	205 (202.8)	27.9173	-	+FL160	-	RNAV 1	
TF	TROIA	N	380423.71N 0085244.95W	147 (145.3)	25.2899	-	-	-	RNAV 1	
TF	DUZOP	N	374011.24N 0083905.64W	158 (155.8)	26.4876	-	-	-	RNAV 1	

Designator	Route	After Take-off		Remarks
		Climb to ALT/FL	Contact	
DUZOP1X	After departure proceed to EMPAD - PT754 - PT755 - TROIA - DUZOP	FL100	Contact Lisboa Approach when passing 1000 ft QNH mentioning only the call sign and passing altitude on 119.105 MHz, or other frequency as announced by ATIS departure.	If unable to comply with Level Constraints advise ATC.

LISBOA SID RNAV1 ELNUB1N (RWY 02)										
Path Terminator	Waypoint			Course/Track MAG (True)	Dist NM	Turn Direction	Constraints		Navigation Specification	Remarks
	Identifier	Flyover	Coordinates				Level	Speed		
CF	EMPAD	N	385344.41N 0090318.84W	032 (029.8)	-	-	+3000 ft	-	RNAV 1	After departure climb FL100 Contact Lisboa Approach when passing 1000 ft QNH mentioning only the callsign and passing altitude on 119.105 MHz, or other frequency as announced by ATIS departure. If unable to comply with Level Constraints advise ATC.
TF	PT759	N	390110.56N 0090459.72W	352 (350.0)	7.5436	-	+4000 ft	-	RNAV 1	
TF	PT764	N	390137.18N 0091442.74W	275 (273.4)	7.5855	-	+FL070	-	RNAV 1	
TF	PT712	N	390243.55N 0094021.52W	275 (273.3)	20.0136	-	-	-	RNAV 1	
TF	FERFE	N	390331.33N 0100020.56W	275 (273.0)	15.5879	-	-	-	RNAV 1	
TF	ELNUB	N	390456.45N 0104015.73W	275 (272.8)	31.1216	-	-	-	RNAV 1	

Designator	Route	After Take-off		Remarks
		Climb to ALT/FL	Contact	
ELNUB1N	After departure proceed to EMPAD - PT759 - PT764 - PT712 - FERFE - ELNUB	FL100	Contact Lisboa Approach when passing 1000 ft QNH mentioning only the call sign and passing altitude on 119.105 MHz, or other frequency as announced by ATIS departure.	If unable to comply with Level Constraints advise ATC.

LISBOA SID RNAV1 IXIDA1N (RWY 02)										
Path Terminator	Waypoint			Course/Track MAG (True)	Dist NM	Turn Direction	Constraints		Navigation Specification	Remarks
	Identifier	Flyover	Coordinates				Level	Speed		
CF	EMPAD	N	385344.41N 0090318.84W	032 (029.8)	-	-	+3000 ft	-	RNAV 1	After departure climb FL100. Contact Lisboa Approach when passing 1000 ft QNH mentioning only the callsign and passing altitude on 119.105 MHz, or other frequency as announced by ATIS departure. If unable to comply with Level Constraints advise ATC. Pending on Military activity
TF	PT751	N	391003.24N 0084414.26W	044 (042.3)	22.0591	-	+ FL070	-	RNAV 1	
TF	IXIDA	N	393918.46N 0080100.00W	051 (048.7)	44.4663	-	-	-	RNAV 1	

Designator	Route	After Take-off		Remarks
		Climb to ALT/FL	Contact	
IXIDA1N	After departure proceed to EMPAD - PT751 - IXIDA	FL100	Contact Lisboa Approach when passing 1000 ft QNH mentioning only the call sign and passing altitude on 119.105 MHz, or other frequency as announced by ATIS departure.	If unable to comply with Level Constraints advise ATC. Pending on Military activity

LISBOA SID RNAV1 OLBOD1L (RWY 02)										
Path Terminator	Waypoint			Course/Track MAG (True)	Dist NM	Turn Direction	Constraints		Navigation Specification	Remarks
	Identifier	Flyover	Coordinates				Level	Speed		
CF	EMPAD	N	385344.41N 0090318.84W	032 (029.8)	-	-	+3000 ft	-	RNAV 1	SID Available only under request with Lisbon Tower. Please advise Lisbon Delivery (118.955) when requesting enroute clearance. After departure climb FL100. Contact Lisboa Approach when passing 1000 ft QNH mentioning only the call sign and passing altitude on 119.105 MHz, or other frequency as announced by ATIS departure. If unable to comply with Level Constraints advise ATC.
TF	PT757	N	385342.55N 0083505.38W	092 (089.9)	22.0353	-	-	-	RNAV 1	
TF	PT758	N	384152.11N 0083504.60W	182 (180.0)	11.8292	-	-	-	RNAV 1	
TF	PT755	N	382514.44N 0091058.04W	241 (239.6)	32.6874	-	+FL160	-	RNAV 1	
TF	EKPER	N	382522.62N 0095959.79W	272 (270.5)	38.5312	-	-	-	RNAV 1	
TF	OLBOD	N	380838.48N 0104015.74W	244 (242.4)	35.8419	-	-	-	RNAV 1	

Designator	Route	After Take-off		Remarks
		Climb to ALT/FL	Contact	
OLBOD1L	After departure proceed to EMPAD - PT757 - PT758 - PT755 - EKPER - OLBOD	FL100	Contact Lisboa Approach when passing 1000 ft QNH mentioning only the call sign and passing altitude on 119.105 MHz, or other frequency as announced by ATIS departure.	SID Available only under request with Lisbon Tower. Please advise Lisbon Delivery (118.955) when requesting enroute clearance. If unable to comply with Level Constraints advise ATC.

LISBOA SID RNAV1 OLBOD1X (RWY 02)										
Path Terminator	Waypoint			Course/Track MAG (True)	Dist NM	Turn Direction	Constraints		Navigation Specification	Remarks
	Identifier	Flyover	Coordinates				Level	Speed		
CF	EMPAD	N	385344.41N 0090318.84W	032 (029.8)	-	-	+3000 ft	-	RNAV 1	After departure climb FL100. Contact Lisboa Approach when passing 1000 ft QNH mentioning only the call sign and passing altitude on 119.105 MHz, or other frequency as announced by ATIS departure. If unable to comply with Level Constraints advise ATC.
TF	PT754	N	385100.84N 0085711.73W	121 (119.7)	5.5000	-	-	-	RNAV 1	
TF	PT755	N	382514.44N 0091058.04W	205 (202.8)	27.9173	-	+FL160	-	RNAV 1	
TF	EKPER	N	382522.62N 0095959.79W	272 (270.5)	38.5312	-	-	-	RNAV 1	
TF	OLBOD	N	380838.48N 0104015.74W	244 (242.4)	35.8419	-	-	-	RNAV 1	

Designator	Route	After Take-off		Remarks
		Climb to ALT/FL	Contact	
OLBOD1X	After departure proceed to EMPAD - PT754 - PT755 - EKPER - OLBOD	FL100	Contact Lisboa Approach when passing 1000 ft QNH mentioning only the call sign and passing altitude on 119.105 MHz, or other frequency as announced by ATIS departure.	If unable to comply with Level Constraints advise ATC.

LISBOA SID RNAV1 ORVED1N (RWY 02)										
Path Terminator	Waypoint			Course/Track MAG (True)	Dist NM	Turn Direction	Constraints		Navigation Specification	Remarks
	Identifier	Flyover	Coordinates				Level	Speed		
CF	EMPAD	N	385344.41N 0090318.84W	032 (029.8)	-	-	+3000 ft	-	RNAV 1	After departure climb FL100. Contact Lisboa Approach when passing 1000 ft QNH mentioning only the call sign and passing altitude on 119.105 MHz, or other frequency as announced by ATIS departure. If unable to comply with Level Constraints advise ATC.
TF	PT753	N	390341.72N 0083633.33W	066 (064.4)	23.1156	-	+FL070	-	RNAV 1	
TF	IDBID	N	391641.60N 0080100.00W	067 (064.7)	30.5492	-	-	-	RNAV 1	
TF	ORVED	N	392300.00N 0073907.00W	071 (069.5)	18.1114	-	-	-	RNAV 1	

Designator	Route	After Take-off		Remarks
		Climb to ALT/FL	Contact	
ORVED1N	After departure proceed to EMPAD - PT753 - IDBID - ORVED	FL100	Contact Lisboa Approach when passing 1000 ft QNH mentioning only the call sign and passing altitude on 119.105 MHz, or other frequency as announced by ATIS departure.	If unable to comply with Level Constraints advise ATC.

LISBOA SID RNAV1 ULVOT1L (RWY 02)										
Path Terminator	Waypoint			Course/Track MAG (True)	Dist NM	Turn Direction	Constraints		Navigation Specification	Remarks
	Identifier	Flyover	Coordinates				Level	Speed		
CF	EMPAD	N	385344.41N 0090318.84W	032 (029.8)	-	-	+3000 ft	-	RNAV 1	SID Available only under request with Lisbon Tower. Please advise Lisbon Delivery (118.955) when requesting enroute clearance. After departure climb FL100. Contact Lisboa Approach when passing 1000 ft QNH mentioning only the call sign and passing altitude on 119.105 MHz, or other frequency as announced by ATIS departure. If unable to comply with Level Constraints advise ATC.
TF	PT757	N	385342.55N 0083505.38W	092 (089.9)	22.0353	-	-	-	RNAV 1	
TF	PT758	N	384152.11N 0083504.60W	182 (180.0)	11.8292	-	-	-	RNAV 1	
TF	PT755	N	382514.44N 0091058.04W	241 (239.6)	32.6874	-	+FL160	-	RNAV 1	
TF	LIGRA	N	380000.00N 0093527.06W	219 (217.6)	31.7506	-	-	-	RNAV 1	
TF	ULVOT	N	373727.55N 0095923.35W	222 (220.2)	29.4409	-	-	-	RNAV 1	

Designator	Route	After Take-off		Remarks
		Climb to ALT/FL	Contact	
ULVOT1L	After departure proceed to EMPAD - PT757 - PT758 - PT755 - LIGRA - ULVOT	FL100	Contact Lisboa Approach when passing 1000 ft QNH mentioning only the call sign and passing altitude on 119.105 MHz, or other frequency as announced by ATIS departure.	SID Available only under request with Lisbon Tower. Please advise Lisbon Delivery (118.955) when requesting enroute clearance. If unable to comply with Level Constraints advise ATC.

LISBOA SID RNAV1 ULVOT1X (RWY 02)										
Path Terminator	Waypoint			Course/Track MAG (True)	Dist NM	Turn Direction	Constraints		Navigation Specification	Remarks
	Identifier	Flyover	Coordinates				Level	Speed		
CF	EMPAD	N	385344.41N 0090318.84W	032 (029.8)	-	-	+3000 ft	-	RNAV 1	After departure climb FL100. Contact Lisboa Approach when passing 1000 ft QNH mentioning only the call sign and passing altitude on 119.105 MHz, or other frequency as announced by ATIS departure. If unable to comply with Level Constraints advise ATC.
TF	PT754	N	385100.84N 0085711.73W	121 (119.7)	5.5000	-	-	-	RNAV 1	
TF	PT755	N	382514.44N 0091058.04W	205 (202.8)	27.9173	-	+FL160	-	RNAV 1	
TF	LIGRA	N	380000.00N 0093527.06W	219 (217.6)	31.7506	-	-	-	RNAV 1	
TF	ULVOT	N	373727.55N 0095923.35W	222 (220.2)	29.4409	-	-	-	RNAV 1	

Designator	Route	After Take-off		Remarks
		Climb to ALT/FL	Contact	
ULVOT1X	After departure proceed to EMPAD - PT754 - PT755 - LIGRA - ULVOT	FL100	Contact Lisboa Approach when passing 1000 ft QNH mentioning only the call sign and passing altitude on 119.105 MHz, or other frequency as announced by ATIS departure.	If unable to comply with Level Constraints advise ATC.

LISBOA SID RNAV1 ZIFOG1N (RWY 02)										
Path Terminator	Waypoint			Course/Track MAG (True)	Dist NM	Turn Direction	Constraints		Navigation Specification	Remarks
	Identifier	Flyover	Coordinates				Level	Speed		
CF	EMPAD	N	385344.41N 0090318.84W	032 (029.8)	-	-	+3000 ft	-	RNAV 1	After departure climb FL100. Contact Lisboa Approach when passing 1000 ft QNH mentioning only the callsign and passing altitude on 119.105 MHz, or other frequency as announced by ATIS departure. If unable to comply with Level Constraints advise ATC.
TF	PT759	N	390110.56N 0090459.72W	352 (350.0)	7.5436	-	+4000 ft	-	RNAV 1	
TF	PT764	N	390137.18N 0091442.74W	275 (273.4)	7.5855	-	+FL070	-	RNAV 1	
TF	PT712	N	390243.55N 0094021.52W	275 (273.3)	20.0136	-	-	-	RNAV 1	
TF	EXFUN	N	384128.05N 0095959.96W	218 (215.9)	26.1984	-	-	-	RNAV 1	
TF	ZIFOG	N	384147.25N 0104015.58W	273 (270.8)	31.5223	-	-	-	RNAV 1	

Designator	Route	After Take-off		Remarks
		Climb to ALT/FL	Contact	
ZIFOG1N	After departure proceed to EMPAD - PT759 - PT764 - PT712 - EXFUN - ZIFOG	FL100	Contact Lisboa Approach when passing 1000 ft QNH mentioning only the call sign and passing altitude on 119.105 MHz, or other frequency as announced by ATIS departure.	If unable to comply with Level Constraints advise ATC.

THIS PAGE INTENTIONALLY LEFT BLANK