

LOC/DME-A

NORTH ISLAND NAS (HALSEY FIELD) (KNZY)

LOC/DME I-UBR 110.9 Chan 46	APCH CRS 275°	Rwy Idg THRE Arprt Elev N/A N/A 26
---	-------------------------	--

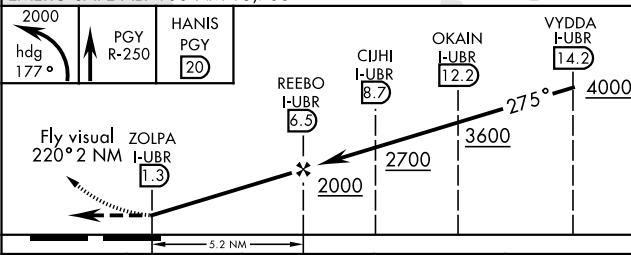
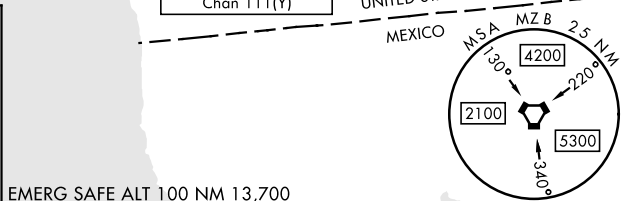
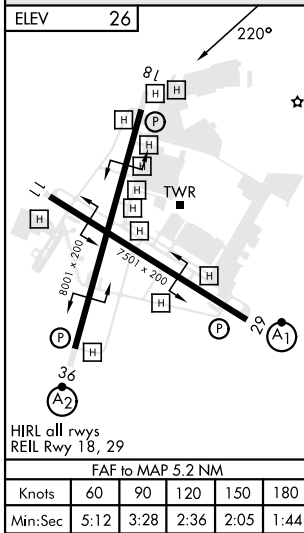
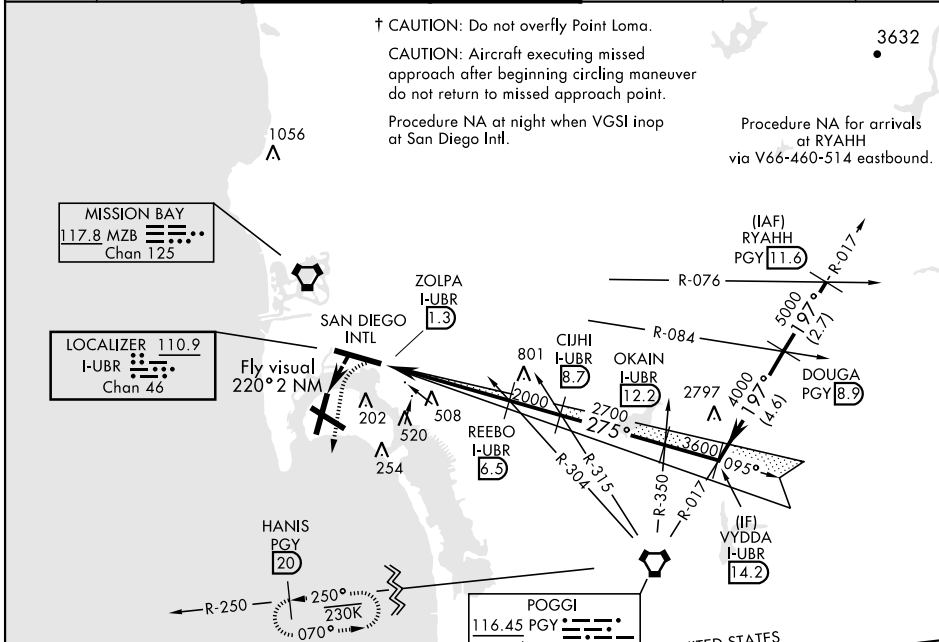
[USN]

▼ * CAUTION: Maneuvering for circling approach not authorized W of Rwy 18-36 centerline. Approach authorized for Rwy 18 or left downwind approach to Rwy 29 after flying down Rwy 18.

† MISSED APPROACH: Climb and maintain 2000 via hdg 177°, intercept PGY VORTAC R-250 to HANIS and hold.

ATIS ★ 317.8	SOCAL APP CON 125.15 317.55	NORTH ISLAND TOWER★ 135.1 336.4	LINDBERGH TOWER 118.3 338.225	GND CON 118.0 360.675	CLNC DEL 128.4 288.25	PAR/ASR
------------------------	---------------------------------------	---	---	---------------------------------	---------------------------------	---------

† CAUTION: Do not overfly Point Loma.
CAUTION: Aircraft executing missed approach after beginning circling maneuver do not return to missed approach point.
Procedure NA at night when VGSI inop at San Diego Intl.
Procedure NA for arrivals at RYAHH via V66-460-514 eastbound.



FAF to MAP 5.2 NM					CATEGORY	A	B	C	D
Knots	60	90	120	150	180				
Min:Sec	5:12	3:28	2:36	2:05	1:44				
CIRCLING *	860-2½		834	(900-2½)		880-2½		880-2¾	
						854 (900-2½)		854 (900-2¾)	

LOC/DME-A

SW-3, 20 MAR 2025 to 17 APR 2025

SW-3, 20 MAR 2025 to 17 APR 2025