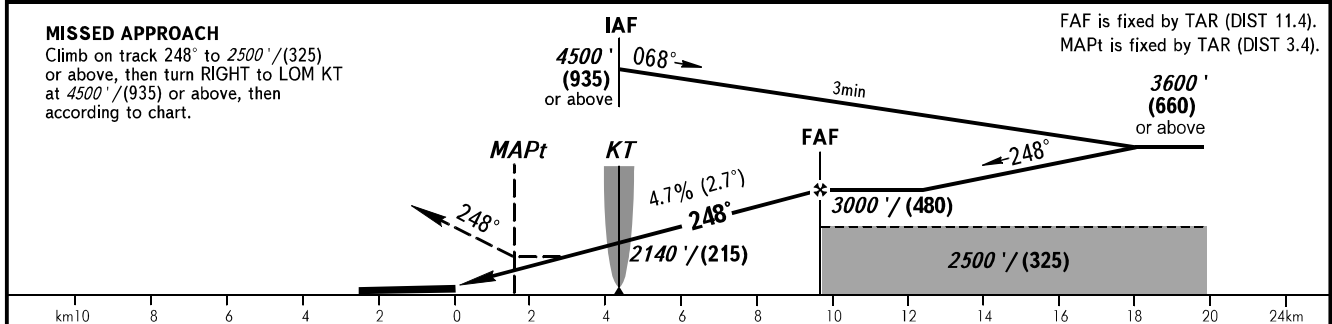
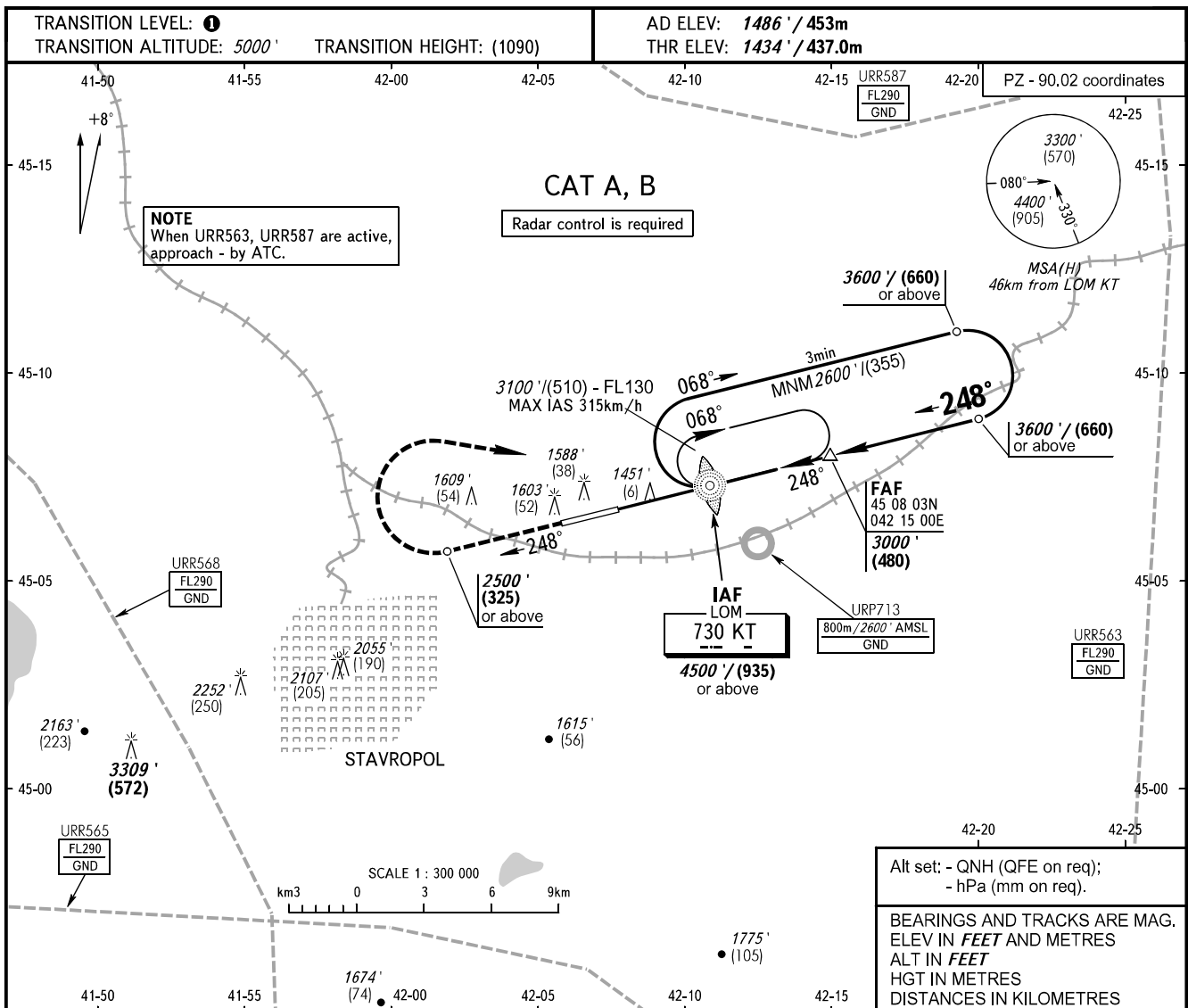


**INSTRUMENT  
APPROACH  
CHART - ICAO**

TOWER **120.900**

**STAVROPOL, RUSSIA**  
SHPAKOVSKOYE  
NDB Y RWY 25



OCA(H)	A	B	C	D	① TRANSITION LEVEL:					
Straight-in Approach	1770' (335') (105)	1770' (335') (105)			- FL060 when QNH is 1013 hPa (760mm mercury column) or above;					
					- FL070 when QNH is 977 hPa (733mm mercury column) or above, but less than 1013 hPa (760mm mercury column);					
Circling	1940' (450') (140)	1980' (500') (155)			- FL080 when QNH is less than 977 hPa (733mm mercury column).					
GROUND SPEED	km/h	150	180	210	240	270	300	330	360	390
FAF - MAPt 8000m	min:sec	3:11	2:40	2:17	1:59	1:46	1:35	1:27	1:20	1:13
RATE OF DESCENT	m/s	1.9	2.3	2.7	3.1	3.5	3.9	4.3	4.7	5.0
	ft/min	385	463	540	617	694	771	848	925	1002