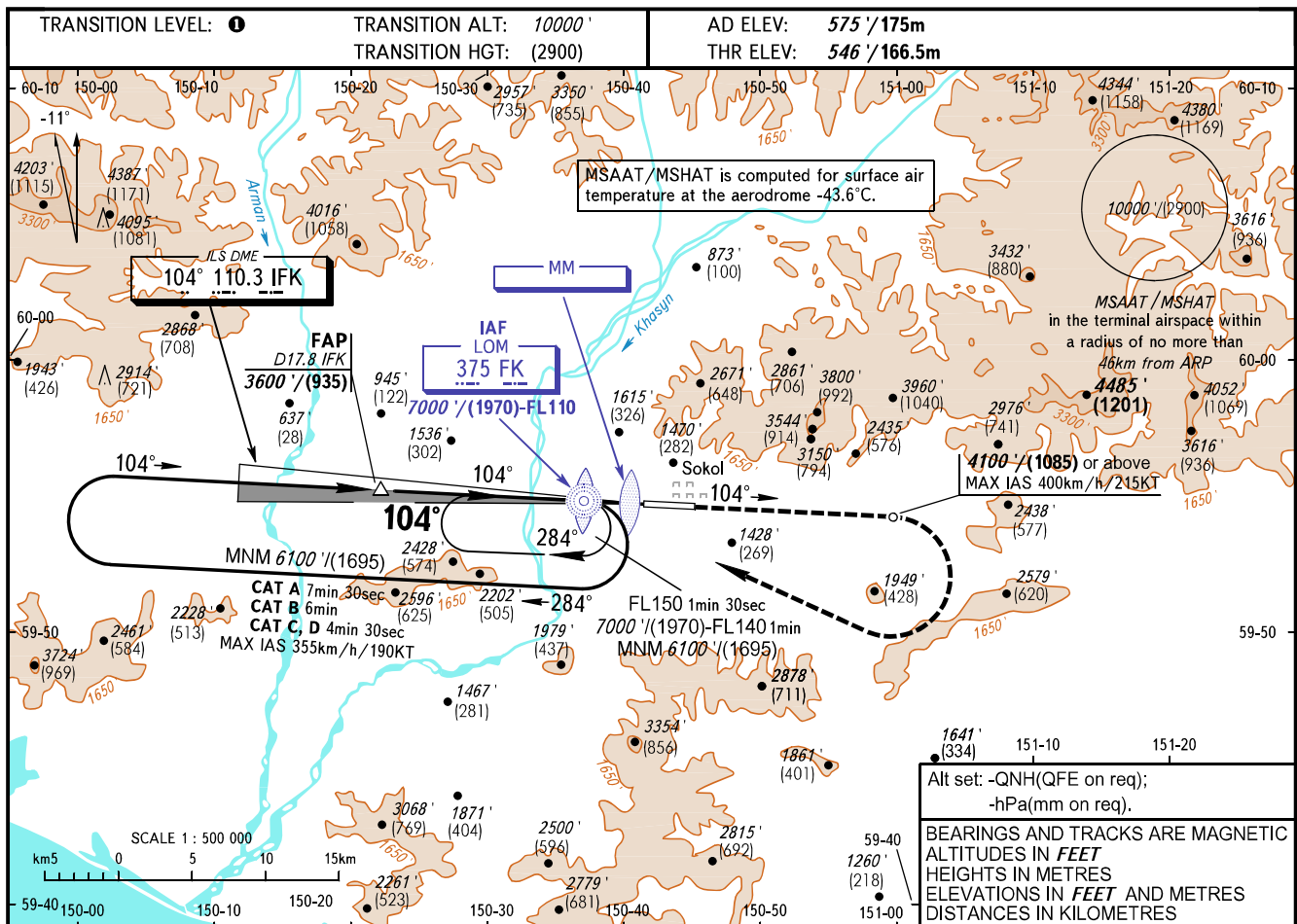


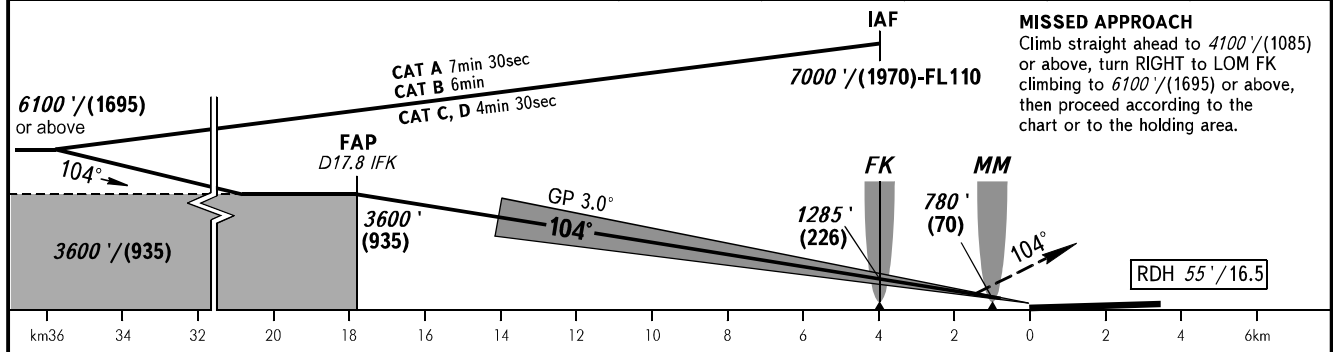
INSTRUMENT
APPROACH
CHART - ICAO

APPROACH **119.300**
TOWER **120.800**

MAGADAN, RUSSIA
SOKOL
ILS Y CAT I RWY 10



DIST to RWY 10 THR	16.0	14.0	12.0	10.0	8.0	6.0	4.0	2.0
ALTITUDE/HEIGHT	3331'/(849)	2990'/(745)	2648'/(641)	2307'/(537)	1966'/(433)	1625'/(329)	1284'/(225)	942'/(121)



OCA(H)		A	B	C	D	
Straight-in Approach	MNM climb gradient for missed APCH	CAT I 4.0%	825' (279') (86)	837' (291') (89)	846' (300') (92)	856' (310') (95)
			2.5%	1287' (741') (226)	1428' (882') (269)	1436' (890') (272)
Circling		2060' (1490') (455)	2760' (2190') (670)	3420' (2850') (870)	4340' (3770') (1150)	

TRANSITION LEVEL:
- FL110 when QNH is 1013 hPa (760mm mercury column) or above;
- FL120 when QNH is 977 hPa (733mm mercury column) or above, but less than 1013 hPa (760mm mercury column);
- FL130 when QNH is less than 977 hPa (733mm mercury column).

WARNING:
1. Missed approach climb gradient is 4.0% up to 4100'/(1085).
2. DME IFK zero ranged to RWY 10 THR.

Visual manoeuvring to the North of AD is PROHIBITED.

GROUND SPEED	km/h	150	180	210	240	270	300	330	360	390
	kt	81	97	113	130	146	162	178	194	211
RATE OF DESCENT	m/s	2.2	2.6	3.1	3.5	3.9	4.4	4.8	5.2	5.7
	ft/min	433	512	610	689	768	866	945	1024	1122