

TUCSON NINE DEPARTURE

AL-430 (FAA)

TUCSON INTL (TUS)
TUCSON, ARIZONA

TUCSON DEP CON
125.1 269.55
ATIS

123.8 279.65
CLNC DEL

126.65 326.2
GND CON

120.025 348.6
TUCSON TOWER

118.3 257.8

TOP ALTITUDE:
17000

DME required.

PHOENIX
115.6 PXR
Chan 103

BUCKEYE
110.6 BXX
Chan 43

STANFIELD
114.8 TFD
Chan 95

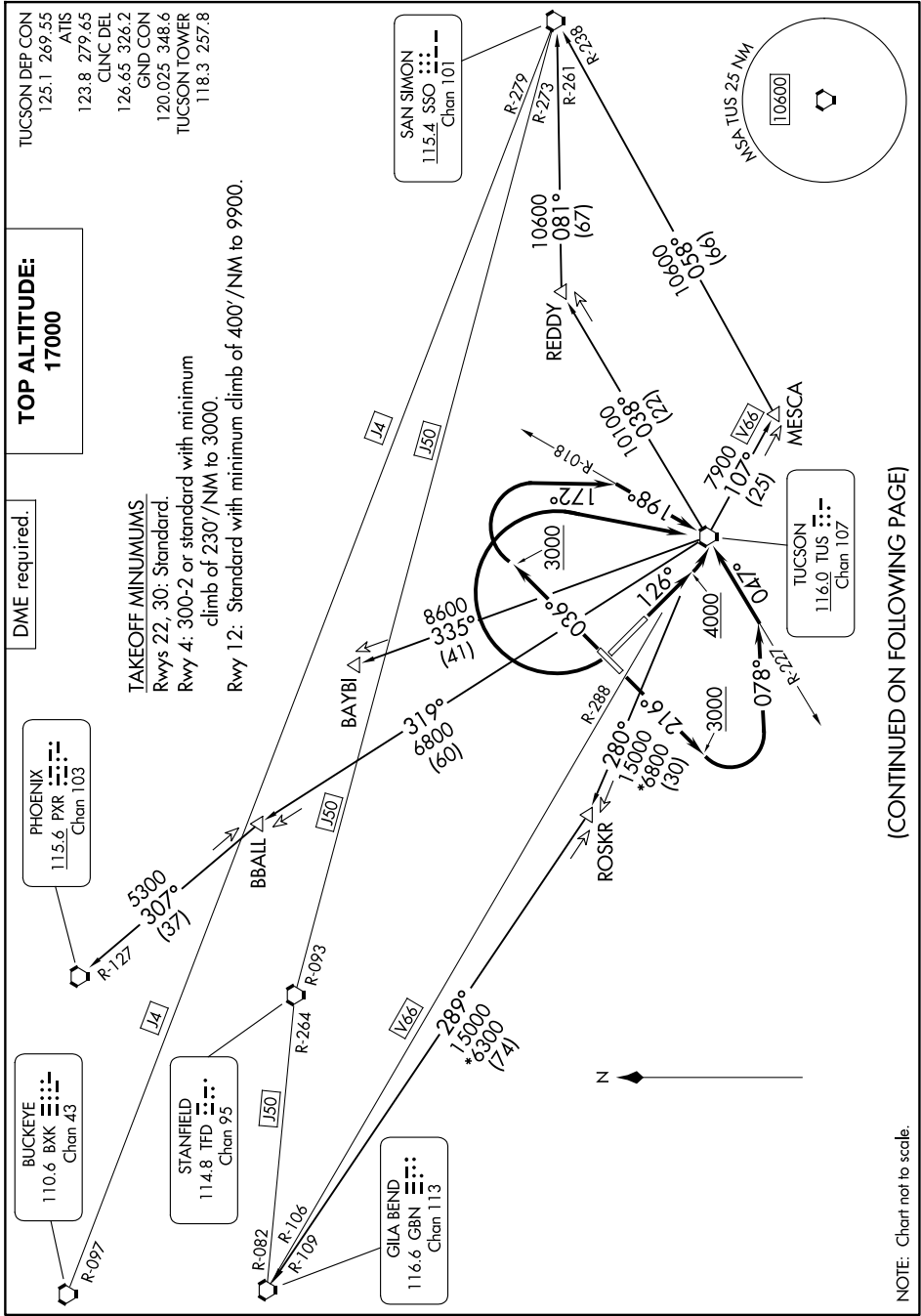
GILA BEND
116.6 GBN
Chan 113

SAN SIMON
115.4 SSO
Chan 101

TUCSON
116.0 TUS
Chan 107

TAKEOFF MINIMUMS
Rwys 22, 30: Standard.
Rwy 4: 300-2 or standard with minimum
climb of 230'/NM to 3000.
Rwy 12: Standard with minimum climb of 400'/NM to 9900.

SW-4, 20 MAR 2025 to 17 APR 2025



(CONTINUED ON FOLLOWING PAGE)

SW-4, 20 MAR 2025 to 17 APR 2025

NOTE: Chart not to scale.

TUCSON NINE DEPARTURE

TUCSON, ARIZONA
TUCSON INTL (TUS)