

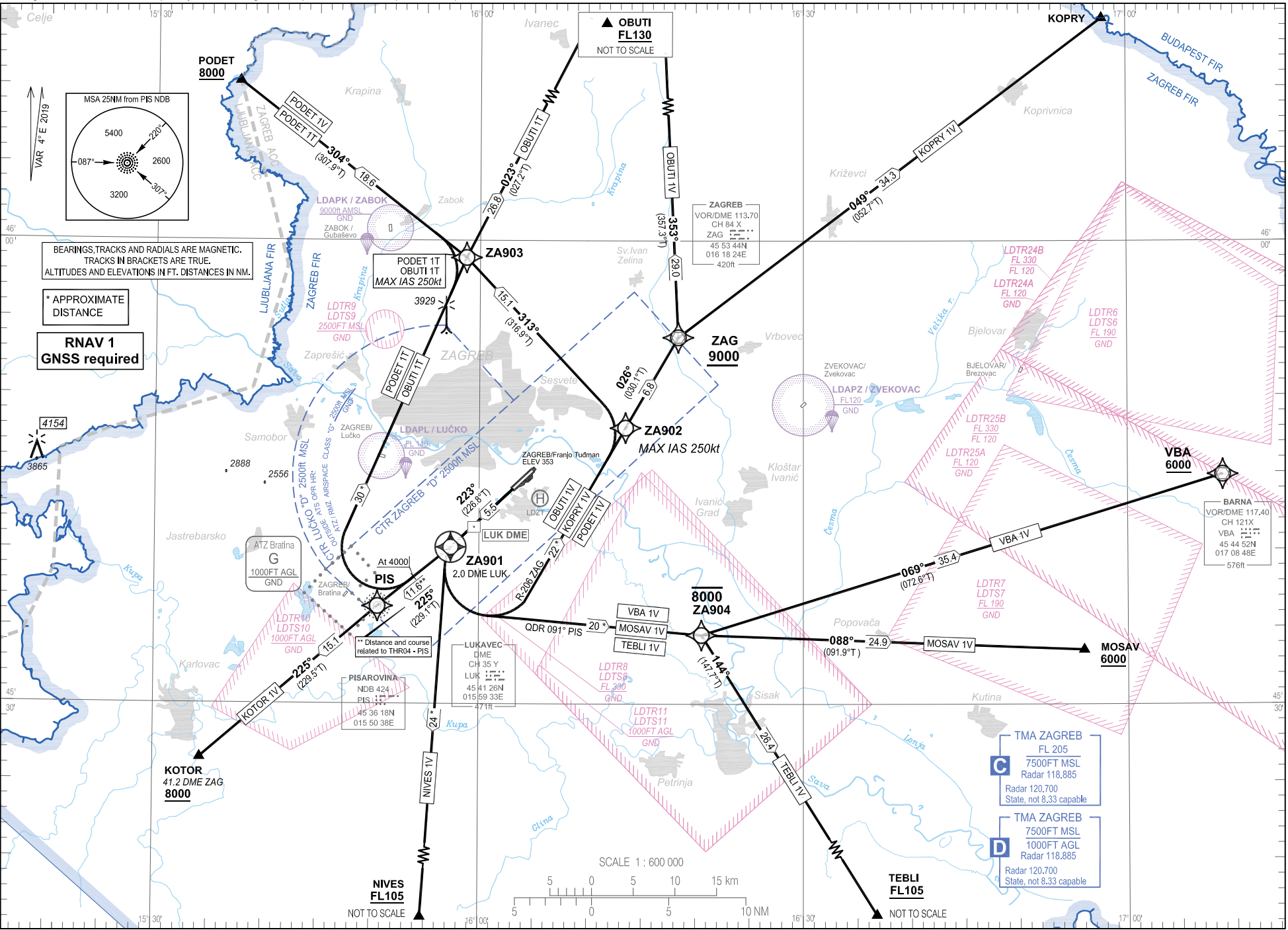
STANDARD DEPARTURE CHART
INSTRUMENT (SID) - ICAO

TRANSITION ALTITUDE
10 000

ZAGREB ATIS 124.575
ZAGREB TOWER 118.300
ZAGREB RADAR 118.885
ZAGREB RADAR 120.700
Scale: not 8.33 capable

ZAGREB / Franjo Tuđman (LDZA)
PODET 1V OBUTI 1V KOPRY 1V VBA 1V
MOSAV 1V TEBLI 1V PODET 1T
NIVES 1V KOTOR 1V RNAV RWY 22

Change: ZAGREB RADAR frequency; Parachuting zones updated; PBN box updated; Heliport LDZT added; Editorial.



ZAGREB / Franjo Tuđman (LDZA)

PODET 1V OBUTI 1V KOPRY 1V VBA 1V

MOSAV 1V TEBLI 1V PODET 1T

RNAV RWY 22

OBUTI 1T NIVES 1V KOTOR 1V

GENERAL INFORMATION AND REQUIREMENTS FOR ALL SIDs

- Calculation of the SIDs is based on an all-engines operative minimum net climb gradient of 3.3 per cent (201 FT/NM). Where a greater climb gradient for a specific SID (or part of SID) is necessary this is indicated in the tabular description of the route.

- After take-off climb initially 6000 FT and contact Zagreb Radar on 118.885 MHz (Zagreb Radar 120.700 MHz State, not 8.33 capable).

WARNING

Back-up conventional (NON-RNAV) procedure, in case of loss of RNAV 1 capability or RNAV system failure, below minimum radar vectoring altitude for RNAV SIDs PODET 1V, OBUTI 1V and KOPRY 1V only:

Climb straight ahead to 2.0 DME LUK (ZA901). At 2.0 DME LUK (ZA901) turn LEFT climbing to intercept and follow R-206 ZAG. On passing 3000 FT AMSL proceed via RNAV SID flight procedure filed in FPL or according to ATC instruction.

LDZA RNAV STANDARD INSTRUMENT DEPARTURE RWY 22

Proposed tabular description for navigation database coding

Serial number	Route	Path descriptor	Waypoint name	Flyover	Course °M (°T)	Magnetic variation	Distance (NM)	Turn direction	Altitude (ft)	Speed (kt)	Remarks	NAV SPEC
010	PODET 1V	CF	ZA901	Y	223° (226.8°T)	4°E	5.5	-	-	-	MNM PDG 4.0% (243 FT/NM) to 2300 FT AMSL due to G class airspace	RNAV 1
020		DF	ZA902	-	-	4°E	-	L	-	-250		
030		TF	ZA903	-	313° (316.9° T)	4°E	15.1	-	-	-		
040		TF	PODET	-	304° (307.9°T)	4°E	18.6	-	+8000	-		
010	OBUTI 1V	CF	ZA901	Y	223° (226.8°T)	4°E	5.5	-	-	-	MNM PDG 4.0% (243 FT/NM) to 2300 FT AMSL due to G class airspace	RNAV 1
020		DF	ZA902	-	-	4°E	-	L	-	-250		
030		TF	ZAG	-	026° (030.1° T)	4°E	6.8	-	+9000	-		
040		TF	OBUTI	-	353° (357.3°T)	4°E	29.0	-	+FL130	-		
010	KOPRY 1V	CF	ZA901	Y	223° (226.8°T)	4°E	5.5	-	-	-	MNM PDG 4.0% (243 FT/NM) to 2300 FT AMSL due to G class airspace	RNAV 1
020		DF	ZA902	-	-	4°E	-	L	-	-250		
030		TF	ZAG	-	026° (030.1° T)	4°E	6.8	-	+9000	-		
040		TF	KOPRY	-	049° (052.7°T)	4°E	34.3	-	-	-		

Change: ZAGREB RADAR frequency; Parachuting zones updated; PBN box updated; Heliport LDZT addce; Editorial.

WARNING

Back-up conventional (NON-RNAV) procedure, in case of loss of RNAV 1 capability or RNAV system failure, below minimum radar vectoring altitude for RNAV SIDs VBA 1V, MOSAV 1V and TEBLI 1V only:

Climb straight ahead to 2.0 DME LUK (ZA901). At 2.0 DME LUK (ZA901) turn LEFT climbing to intercept and follow bearing QDR 091° PIS NDB. On passing 3000 FT AMSL proceed via RNAV SID flight procedure filed in FPL or according to ATC instruction.

LDZA RNAV STANDARD INSTRUMENT DEPARTURE RWY 22

Proposed tabular description for navigation database coding

Serial number	Route	Path descriptor	Waypoint name	Flyover	Course °M (°T)	Magnetic variation	Distance (NM)	Turn direction	Altitude (ft)	Speed (kt)	Remarks	NAV SPEC
010	VBA 1V	CF	ZA901	Y	223° (226.8°T)	4°E	5.5	-	-	-	MNM PDG 4.0% (243 FT/NM) to 2300 FT AMSL due to G class airspace	RNAV 1
020		DF	ZA904	-	-	4°E	-	L	-8000	-		
030		TF	VBA	-	069° (072.6°T)	4°E	35.4	-	+6000	-		
010	MOSAV 1V	CF	ZA901	Y	223° (226.8°T)	4°E	5.5	-	-	-	MNM PDG 4.0% (243 FT/NM) to 2300 FT AMSL due to G class airspace	RNAV 1
020		DF	ZA904	-	-	4°E	-	L	-8000	-		
030		TF	MOSAV	-	088° (091.9°T)	4°E	24.9	-	+6000	-		
010	TEBLI 1V	CF	ZA901	Y	223° (226.8°T)	4°E	5.5	-	-	-	MNM PDG 4.0% (243 FT/NM) to 2300 FT AMSL due to G class airspace	RNAV 1
020		DF	ZA904	-	-	4°E	-	L	-8000	-		
030		TF	TEBLI	-	144° (147.7°T)	4°E	26.4	-	+FL105	-		

Change: ZAGREB RADAR frequency; Parachuting zones updated; PBN box updated; Heliport LDZT added; Editorial.

ZAGREB / Franjo Tuđman (LDZA)

PODET 1V OBUTI 1V KOPRY 1V VBA 1V

MOSAV 1V TEBLI 1V PODET 1T

OBUTI 1T NIVES 1V KOTOR 1V

RNAV RWY 22

LDZA RNAV STANDARD INSTRUMENT DEPARTURE RWY 22

Proposed tabular description for navigation database coding

Serial number	Route	Path descriptor	Waypoint name	Flyover	Course °M (°T)	Magnetic variation	Distance (NM)	Turn direction	Altitude (ft)	Speed (kt)	Remarks	NAV SPEC
010	PODET 1T	CA	-	-	223° (226.8°T)	4°E	-	-	@4000	-	MNM PDG 6.7% (407 FT/NM) to 5000 FT AMSL	RNAV 1
020		DF	ZA903	-	-	4°E	-	R	-	-250		
030		TF	PODET	-	304° (307.9°T)	4°E	18.6	-	+8000	-		
010	OBUTI 1T	CA	-	-	223° (226.8°T)	4°E	-	-	@4000	-	MNM PDG 6.7% (407 FT/NM) to 5000 FT AMSL	RNAV 1
020		DF	ZA903	-	-	4°E	-	R	-	-250		
030		TF	OBUTI	-	023° (027.2°T)	4°E	26.8	-	+FL130	-		
010	NIVES 1V	CF	ZA901	Y	223° (226.8°T)	4°E	5.5	-	+2500	-	MNM PDG 6.4% (389 FT/NM) to 2500 FT AMSL	RNAV 1
020		DF	NIVES	-	-	4°E	-	L	+FL105	-		
010	KOTOR 1V	CF	PIS	-	225° (229.1°T)	4°E	11.6	-	-	-	-	RNAV 1
030		TF	KOTOR	-	225° (229.5°T)	4°E	15.1	-	+8000	-		

Waypoint coordinates

Waypoint name	WGS-84 latitude	WGS-84 longitude
KOPRY	461425N	0165746E
KOTOR	452628N	0153420E
MOSAV	453331N	0165557E
NIVES	451326N	0155427E
OBUTI	462242N	0161627E
PODET	461017N	0153736E
TEBLI	451205N	0164033E
PIS	453618.10N	0155038.39E
VBA	454452.08N	0170848.29E
ZAG	455344.01N	0161824.11E
ZA901	454007.9N	0155722.9E
ZA902	454752.4N	0161331.9E
ZA903	455852.9N	0155844.4E
ZA904	453427.5N	0162035.1E

Change: ZAGREB RADAR frequency; Parachuting zones updated; PBN box updated; Heliport LDZT added; Editorial.