

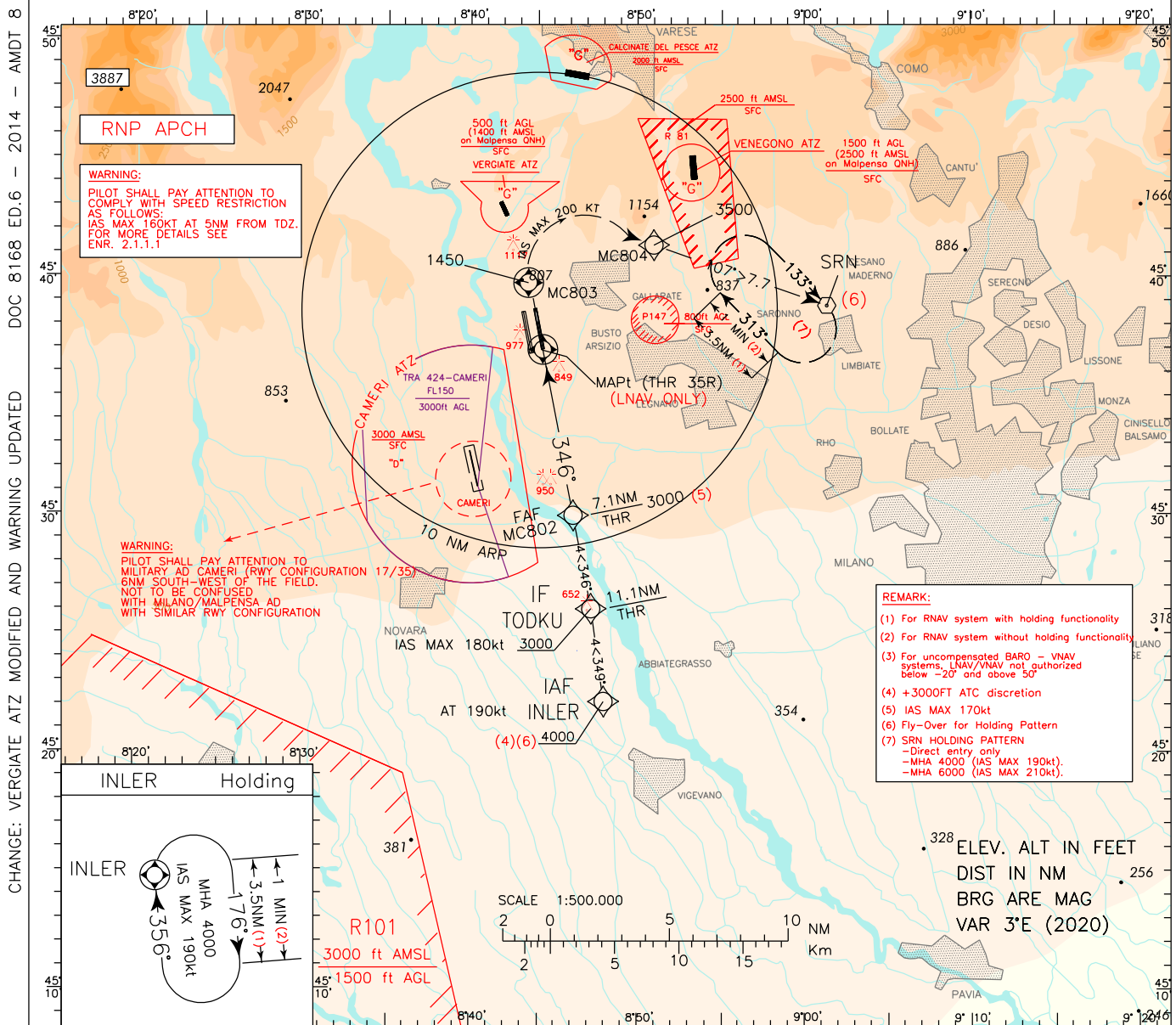
INSTRUMENT APPROACH CHART - ICAO

EGNOS CH 72492 E35A

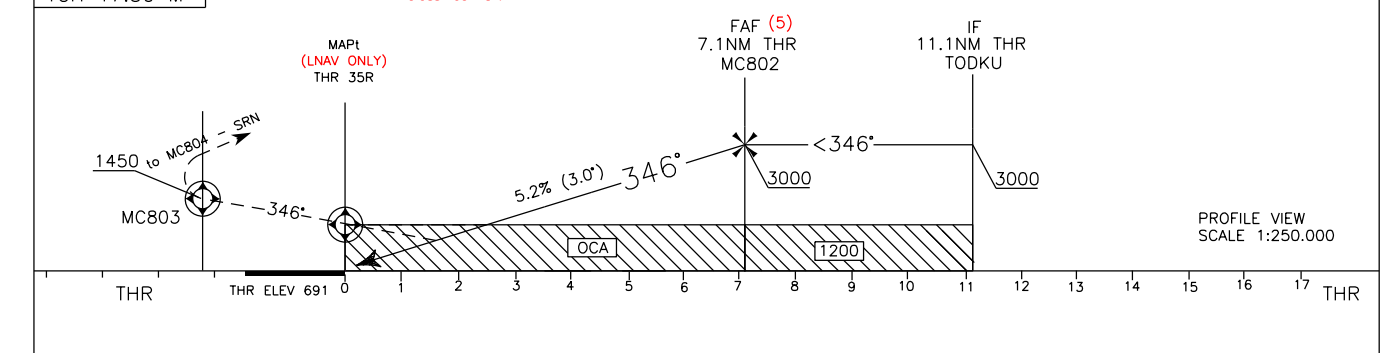
AD ELEV 768

APP *Milano Radar* 125.630 (132.705)
 TWR *Malpensa TWR* 123.600 (128.350)
 ATIS *Malpensa Arrival Information* 120.025

MILANO/MALPENSA (LIMC) RNP RWY 35R



TRANSITION ALT 6000
 MISSED APPROACH: Proceed on course 346° climbing to 4000 ft. At MC803 (MCA 1450 ft) turn right (IAS MAX 200kt) on course 107° to MC804 (MCA 3500ft) then proceed to SRN holding pattern.
REMARK: Missed approach obstacle clearance is provided by 2.5% gradient; 5% gradient until 3000 ft is required to overfly Vergiate and Venegono ATZ. Pilots unable to comply with this gradient shall inform ATC and are advised that will fly within airspace classified "G".



OCA (OCH)		A	B	C	D	CIRCLING SECTORS 	FT PER MIN	GS	FAF - THR	DIST THR	ALT (HGT)	MNM SECT ALT 25NM FROM ARP
STRAIGHT IN APPROACH												
STRAIGHT IN APPROACH	LPV	969 (278)	981 (290)	989 (298)	1000 (309)		850	160	7.07 NM	D 7	2981 (2290)	MNM SECT ALT 25NM FROM ARP
	LNAV/VNAV (3)	1120 (429)	1132 (441)	1140 (449)	1151 (460)		740	140	2 : 39	D 6	2662 (1971)	
	LNAV	1200 (509)					635	120	3 : 02	D 5	2343 (1652)	
CIRCLING		1450 (682)	1650 (882)	1710 (942)		530	100	3 : 33	D 4	2024 (1333)		
						425	80	4 : 15	D 3	1705 (1014)		
								5 : 19	D 2	1386 (695)		