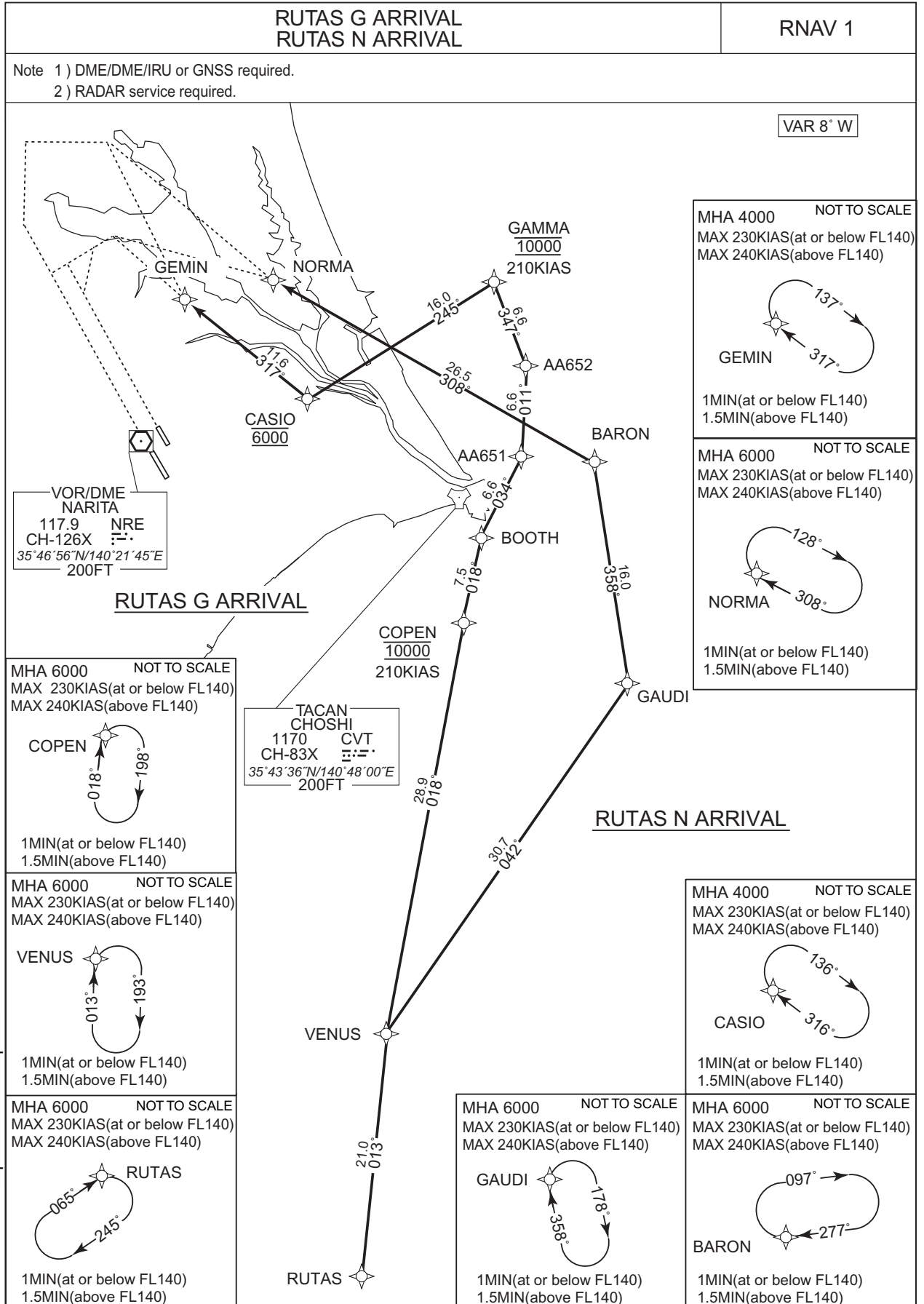


STANDARD ARRIVAL CHART - INSTRUMENT

RJAA / NARITA INTL

RNAV STAR RWY16R/16L



CHANGE : Description of HLDG pattern.

STANDARD ARRIVAL CHART - INSTRUMENT

RJAA / NARITA INTL

RNAV STAR RWY16R/16L

RUTAS G ARRIVAL

From RUTAS, to VENUS, to COPEN at 10000FT, to BOOTH, to AA651, to AA652, to GAMMA at 10000FT, to CASIO at 6000FT, to GEMIN.

Critical DME	-
DME GAP	-
Inappropriate Navaids	See AD1.1.6.10.3. Inappropriate NAVAIDs for RNAV1

Serial Number	Path Descriptor	Waypoint Identifier	Fly Over	Course °M(°T)	Magnetic Variation	Distance (NM)	Turn Direction	Altitude (FT)	Speed (KIAS)	Vertical Angle	Navigation Specification
001	IF	RUTAS	-	-	-7.5	-	-	-	-	-	RNAV1
002	TF	VENUS	-	013 (005.8)	-7.5	21.0	-	-	-	-	RNAV1
003	TF	COPEN	-	018 (010.5)	-7.5	28.9	-	10000	210	-	RNAV1
004	TF	BOOTH	-	018 (010.6)	-7.5	7.5	-	-	-	-	RNAV1
005	TF	AA651	-	034 (026.6)	-7.5	6.6	-	-	-	-	RNAV1
006	TF	AA652	-	011 (003.1)	-7.5	6.6	-	-	-	-	RNAV1
007	TF	GAMMA	-	347 (339.6)	-7.5	6.6	-	10000	210	-	RNAV1
008	TF	CASIO	-	245 (237.6)	-7.5	16.0	-	6000	-	-	RNAV1
009	TF	GEMIN	-	317 (309.1)	-7.5	11.6	-	-	-	-	RNAV1

Path	Waypoint Identifier	Inbound Course °M(°T)	Magnetic Variation	Outbound Time (MIN)	Outbound Distance (NM)	Turn Direction	Minimum Altitude (FT)	Maximum Altitude (FT)	Speed (KIAS)	Navigation Specification
Hold	RUTAS	065 (057.9)	-7.5	1.0(-14000) 1.5(+14001)	-	R	6000	-	-230(-14000) -240(+14001)	RNAV1
Hold	VENUS	013 (005.8)	-7.5	1.0(-14000) 1.5(+14001)	-	R	6000	-	-230(-14000) -240(+14001)	RNAV1
Hold	COPEN	018 (010.5)	-7.5	1.0(-14000) 1.5(+14001)	-	R	6000	-	-230(-14000) -240(+14001)	RNAV1
Hold	CASIO	316 (308.6)	-7.5	1.0(-14000) 1.5(+14001)	-	R	4000	-	-230(-14000) -240(+14001)	RNAV1
Hold	GEMIN	317 (309.1)	-7.5	1.0(-14000) 1.5(+14001)	-	R	4000	-	-230(-14000) -240(+14001)	RNAV1

CHANGE : BOOTH renamed

STANDARD ARRIVAL CHART - INSTRUMENT

RJAA / NARITA INTL

RNAV STAR RWY16R/16L

RUTAS N ARRIVAL

From RUTAS, to VENUS, to GAUDI, to BARON, to NORMA.

Critical DME	-
DME GAP	-
Inappropriate Nav aids	See AD1.1.6.10.3. Inappropriate NAVAIDS for RNAV1

Serial Number	Path Descriptor	Waypoint Identifier	Fly Over	Course °M(°T)	Magnetic Variation	Distance (NM)	Turn Direction	Altitude (FT)	Speed (KIAS)	Vertical Angle	Navigation Specification
001	IF	RUTAS	-	-	-7.5	-	-	-	-	-	RNAV1
002	TF	VENUS	-	013 (005.8)	-7.5	21.0	-	-	-	-	RNAV1
003	TF	GAUDI	-	042 (034.1)	-7.5	30.7	-	-	-	-	RNAV1
004	TF	BARON	-	358 (351.0)	-7.5	16.0	-	-	-	-	RNAV1
005	TF	NORMA	-	308 (300.0)	-7.5	26.5	-	-	-	-	RNAV1

Path	Waypoint Identifier	Inbound Course °M(°T)	Magnetic Variation	Outbound Time (MIN)	Outbound Distance (NM)	Turn Direction	Minimum Altitude (FT)	Maximum Altitude (FT)	Speed (KIAS)	Navigation Specification
Hold	RUTAS	065 (057.9)	-7.5	1.0(-14000) 1.5(+14001)	-	R	6000	-	-230(-14000) -240(+14001)	RNAV1
Hold	VENUS	013 (005.8)	-7.5	1.0(-14000) 1.5(+14001)	-	R	6000	-	-230(-14000) -240(+14001)	RNAV1
Hold	GAUDI	358 (351.0)	-7.5	1.0(-14000) 1.5(+14001)	-	R	6000	-	-230(-14000) -240(+14001)	RNAV1
Hold	BARON	277 (270.0)	-7.5	1.0(-14000) 1.5(+14001)	-	R	6000	-	-230(-14000) -240(+14001)	RNAV1
Hold	NORMA	308 (300.0)	-7.5	1.0(-14000) 1.5(+14001)	-	R	6000	-	-230(-14000) -240(+14001)	RNAV1

Waypoint Coordinates

Waypoint Identifier	Coordinates	Waypoint Identifier	Coordinates
AA651	354615.0N / 1405457.4E	GAMMA	355856.3N / 1405234.6E
AA652	355247.8N / 1405523.8E	GAUDI	353002.4N / 1410418.1E
BARON	354551.0N / 1410112.0E	GEMIN	355738.6N / 1402450.7E
BOOTH	354023.6N / 1405120.5E	NORMA	355900.8N / 1403254.0E
CASIO	355021.4N / 1403556.1E	RUTAS	344349.3N / 1404034.2E
COPEN	353303.7N / 1404939.2E	VENUS	350440.1N / 1404309.7E

CHANGE : BOOTH renamed