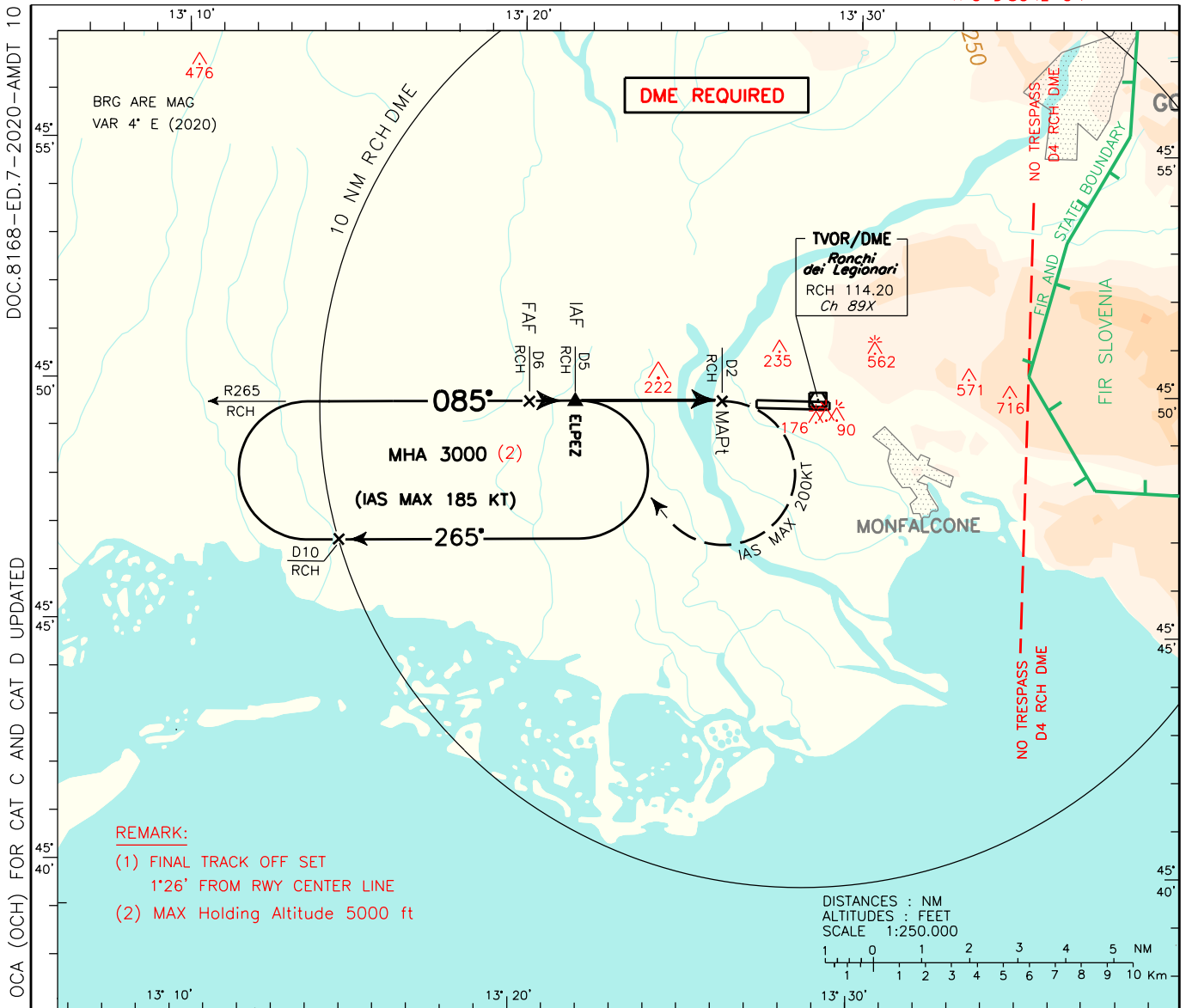


INSTRUMENT APPROACH CHART - ICAO

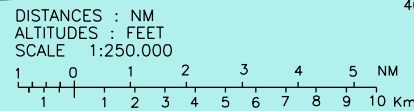
AERODROME ELEV **40**

APP Padova Radar **119.175**
TWR Ronchi TWR **130.205**

TRIESTE RONCHI DEI LEGIONARI LIPO
VOR Y RWY 09
ATC DISCRETION



REMARK:
 (1) FINAL TRACK OFF SET
 1'26" FROM RWY CENTER LINE
 (2) MAX Holding Altitude 5000 ft

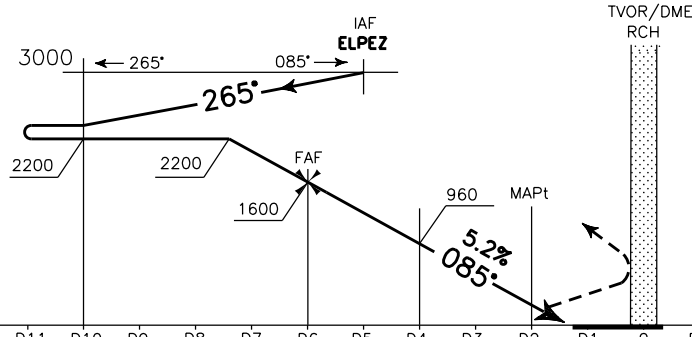


CHANGE: MINIMA CIRCLING OCA (OCH) FOR CAT C AND CAT D UPDATED

DOC:8168-ED.7-2020-AMDT 10

TRANSITION ALT 6000

MISSED APPROACH: Not later than 2 NM before RCH DME turn right (IAS MAX 200 kt), climbing to 3000 ft, bound to ELPEZ, to enter Missed Approach Holding pattern. Right turn Holding Pattern toward the station on RDL 265 RCH VOR between 5NM and 10NM RCH DME (IAS MAX 185 kt).



D16	D15	D14	D13	D12	D11	D10	D9	D8	D7	D6	D5	D4	D3	D2	D1	0	D1	D2	D3	D4	D5	D6	D7	D8
RCH DME															THR ELEV 37		RCH DME							
NM															NM		NM							

OCA (OCH)		A	B	C	D
STRAIGHT IN APPROACH	VOR+DME	500 (460)			
CIRCLING (*)		700 (660)	1170 (1130)	1360 (1320)	

CIRCLING SECTORS: Only South of RWY					
GS	FT PER MIN	FAF-MAPt	MAPt-THR	DME RCH	ALT (HGT)
	80	425	3 : 00	0 : 32	6 1600(1563)
	100	535	2 : 24	0 : 26	5 1280(1243)
	120	640	2 : 00	0 : 22	4 960(923)
	140	745	1 : 42	0 : 18	3 640(603)
160	855	1 : 30	0 : 16		

