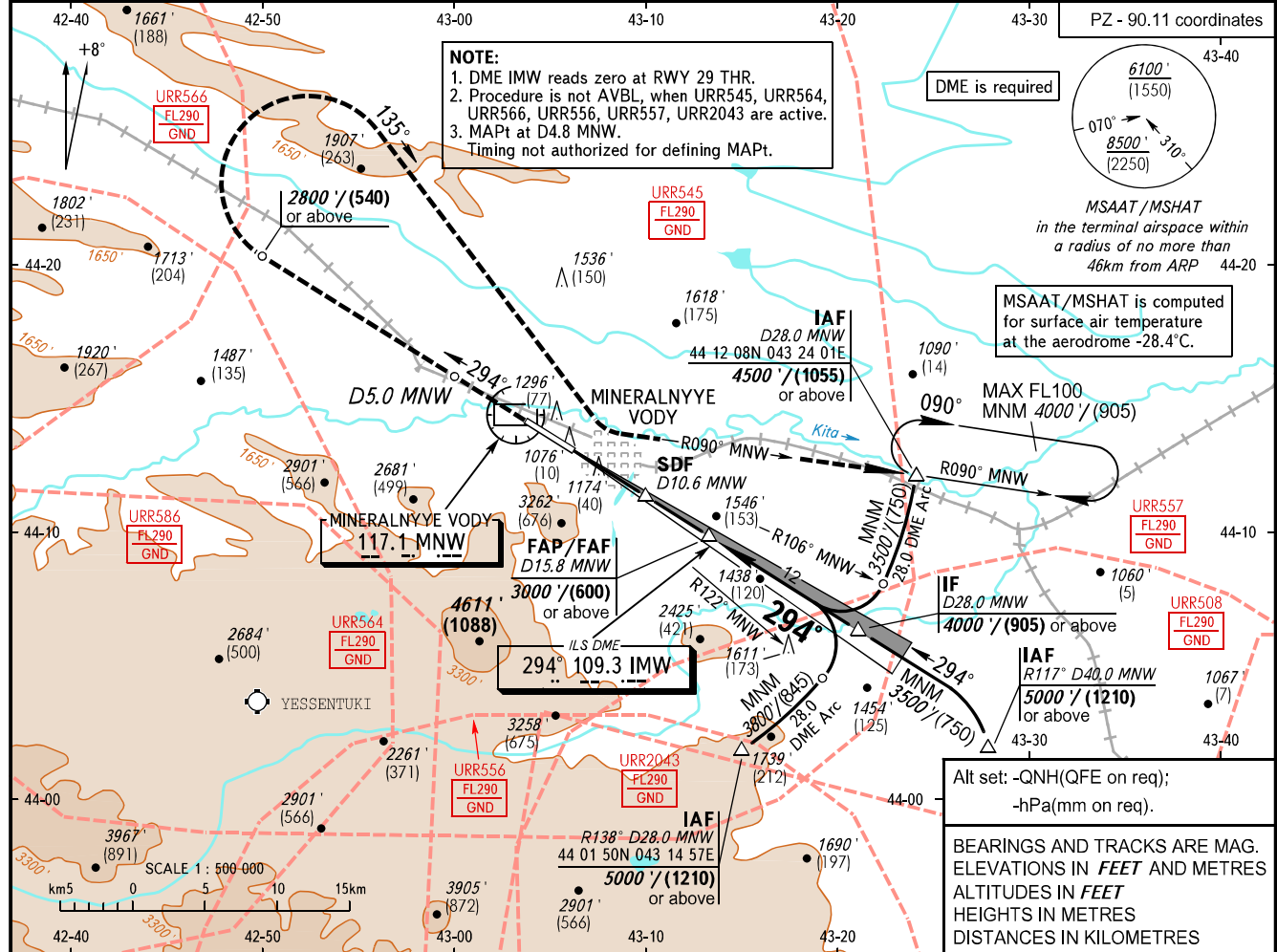


INSTRUMENT  
APPROACH  
CHART - ICAO

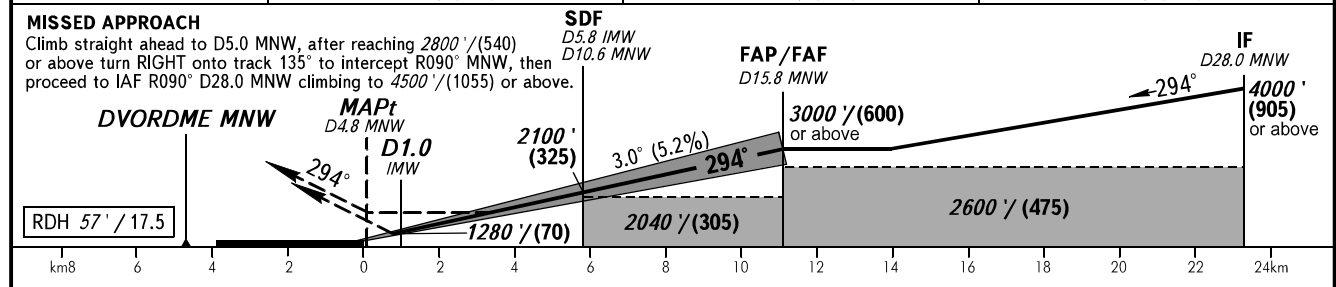
MINERALNYYE VODY, RUSSIA  
MINERALNYYE VODY  
ILS Y CAT I, LOC Y RWY 29

RADAR 120.700  
START 128.000

TRANSITION LEVEL: **01**      TRANSITION ALT: 9000'      AD ELEV: 1047' / 319m  
TRANSITION HGT: (2430)      THR ELEV: 1044' / 318.0m



DME MNW	10.0	12.0	14.0
ALTITUDE/HEIGHT	2006' / (293)	2347' / (397)	2688' / (501)



OCA(H)		A	B	C	D					
Straight-in	<b>CAT I</b>	1206' (162') (50)	1218' (174') (54)	1226' (182') (56)	1237' (193') (59)					
	Approach	<b>With SDF</b>	1700' (660') (205)	1700' (660') (205)	1700' (660') (205)	1700' (660') (205)				
		<b>WO SDF</b>	2040' (1000') (305)	2040' (1000') (305)	2040' (1000') (305)	2040' (1000') (305)				
Circling		1890' (840') (260)	1890' (840') (260)	2180' (1140') (350)	2320' (1280') (395)					
GROUND SPEED		km/h	150	180	210	240	270	300	330	360
		kt	81	97	113	130	146	162	178	194
RATE OF DESCENT		m/s	2.2	2.6	3.0	3.5	3.9	4.3	4.8	5.2
		ft / min	427	512	597	682	768	853	938	1024

**TRANSITION LEVEL:**  
- FL100 when QNH is 1013 hPa (760mm mercury column) or above;  
- FL110 when QNH is 977 hPa (733mm mercury column) or above, but less than 1013 hPa (760mm mercury column);  
- FL120 when QNH is less than 977 hPa (733mm mercury column).

Visual manoeuvring south of the AD is PROHIBITED.