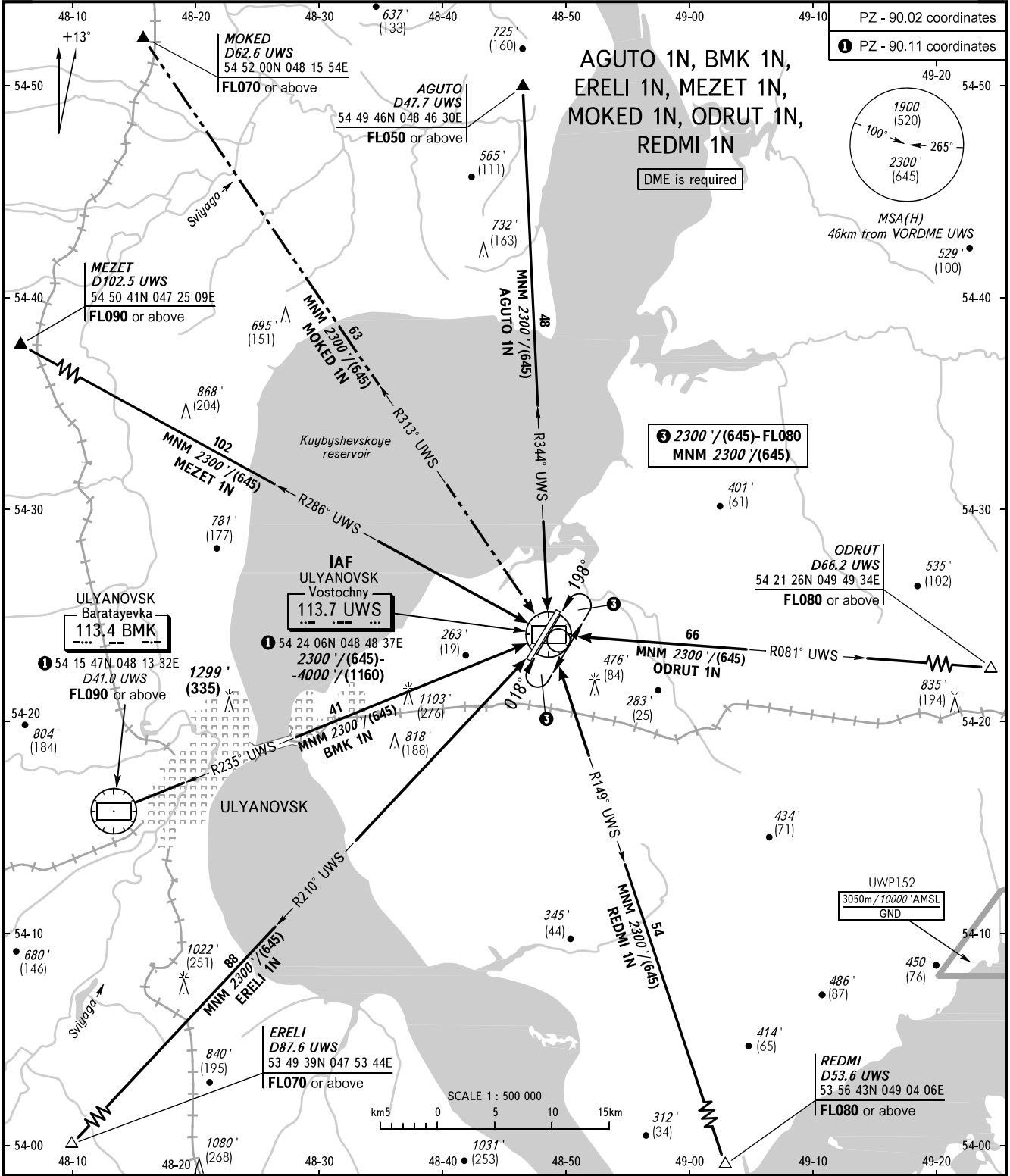


STANDARD ARRIVAL CHART  
INSTRUMENT (STAR) - ICAO

ULYANOVSK, RUSSIA  
VOSTOCHNY  
RWY 02/20

TRANSITION  
LEVEL : 2



VOSTOCHNY TOWER 124.200

2 TRANSITION LEVEL:  
- FL050 when QNH is 977 hPa (733mm mercury column) or above;  
- FL060 when QNH is less than 977 hPa (733mm mercury column).

BEARINGS AND TRACKS ARE MAGNETIC  
ALTITUDES IN FEET  
ELEVATIONS IN FEET AND METRES  
HEIGHTS IN METRES  
DISTANCES IN KILOMETRES

Alt set: - QNH (QFE on req);  
- hPa (mm on req).