

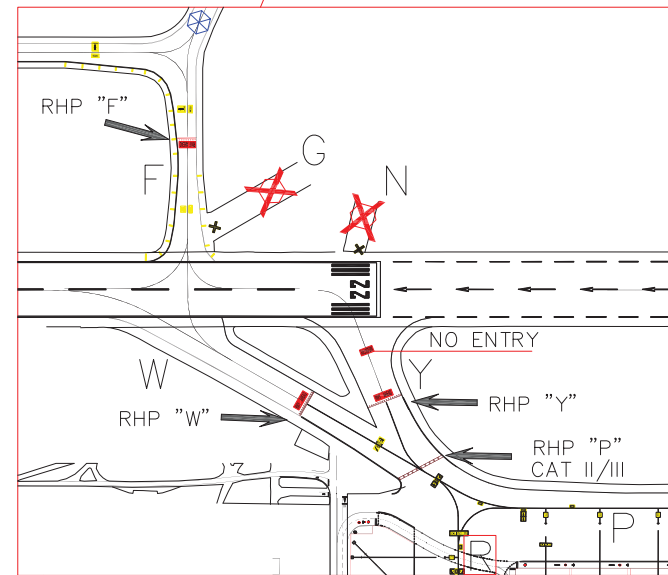
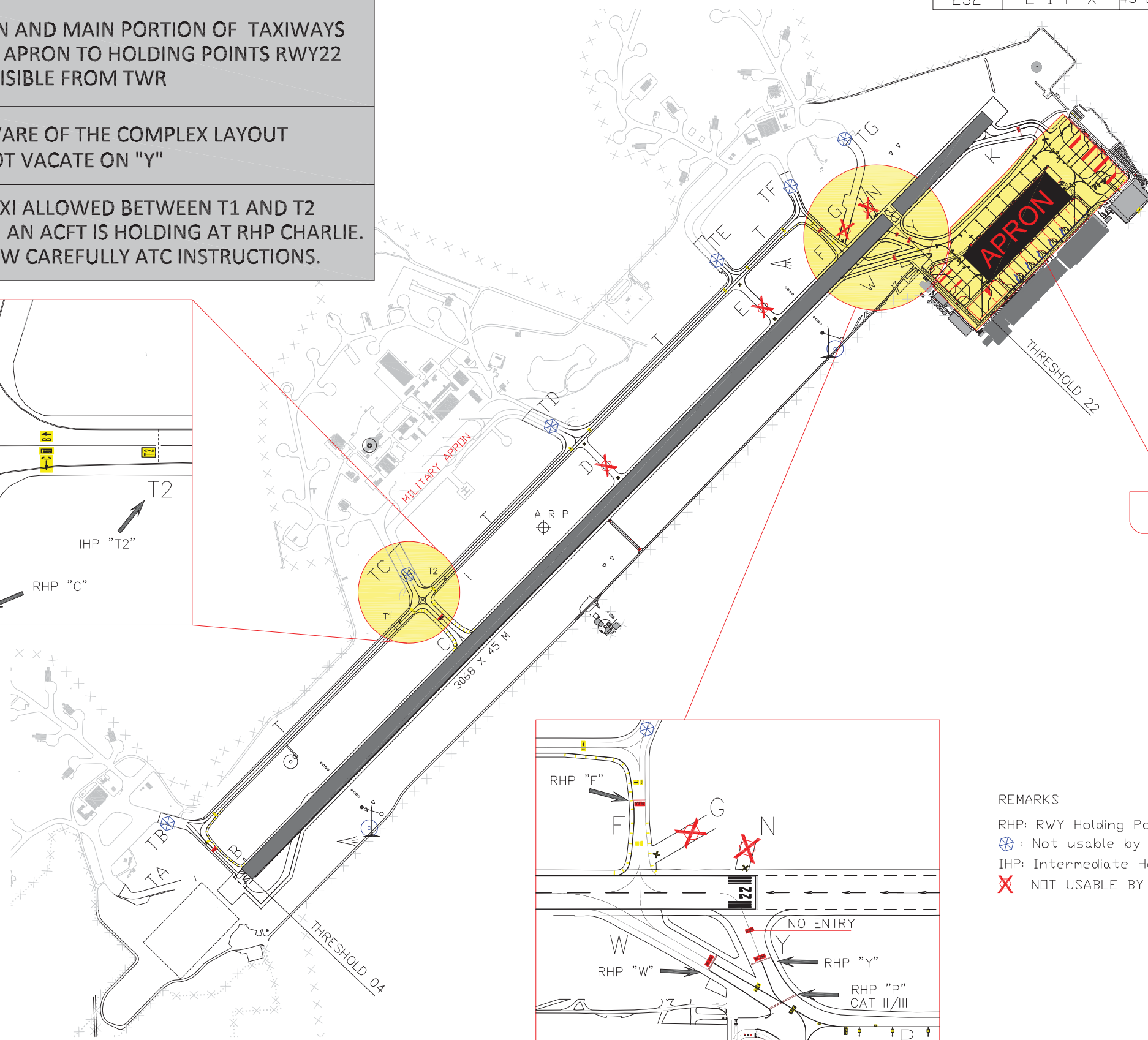
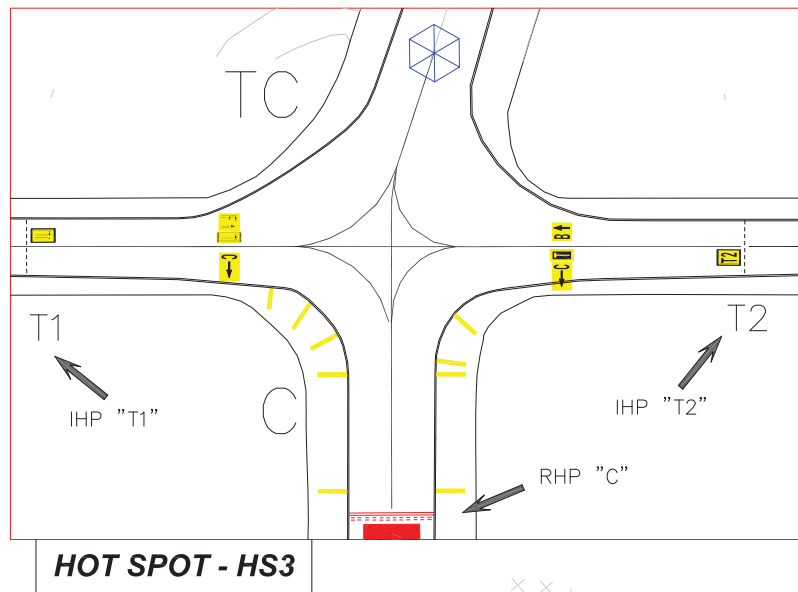
HOTSPOT MAP (NOT FOR NAVIGATION)

AD ELEV	240	VERONA / VILLAFRANCA	
APRON ELEV	232	L I P X	45°23' 47"N 010° 53' 16"E

ATC SERVICES	
TWR	118.650
GND	121.755
ATIS	124.130

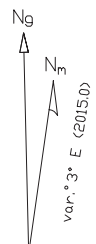
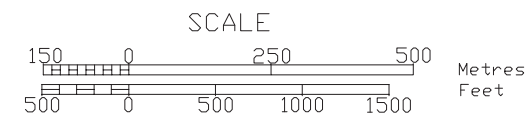
HOT SPOT	DESCRIPTION
HS1	APRON AND MAIN PORTION OF TAXIWAYS FROM APRON TO HOLDING POINTS RWY22 NOT VISIBLE FROM TWR
HS2	BE AWARE OF THE COMPLEX LAYOUT DO NOT VACATE ON "Y"
HS3	NO TAXI ALLOWED BETWEEN T1 AND T2 WHEN AN ACFT IS HOLDING AT RHP CHARLIE. FOLLOW CAREFULLY ATC INSTRUCTIONS.

CHANGE: GND AND ATIS FREQUENCY MODIFIED AND UPDATED CHART



HS1

- REMARKS
- RHP: RWY Holding Position
 - ⊕: Not usable by Civil Aircraft
 - IHP: Intermediate Holding Position
 - ✗: NOT USABLE BY ACFT



(Annual rate of change: 8')

Data provided by Aeroporto Valerio Catullo S.p.A.