

Isafjordur RNP C Instrument Approach Chart - ICAO

INSTRUMENT
APPROACH
CHART - ICAO

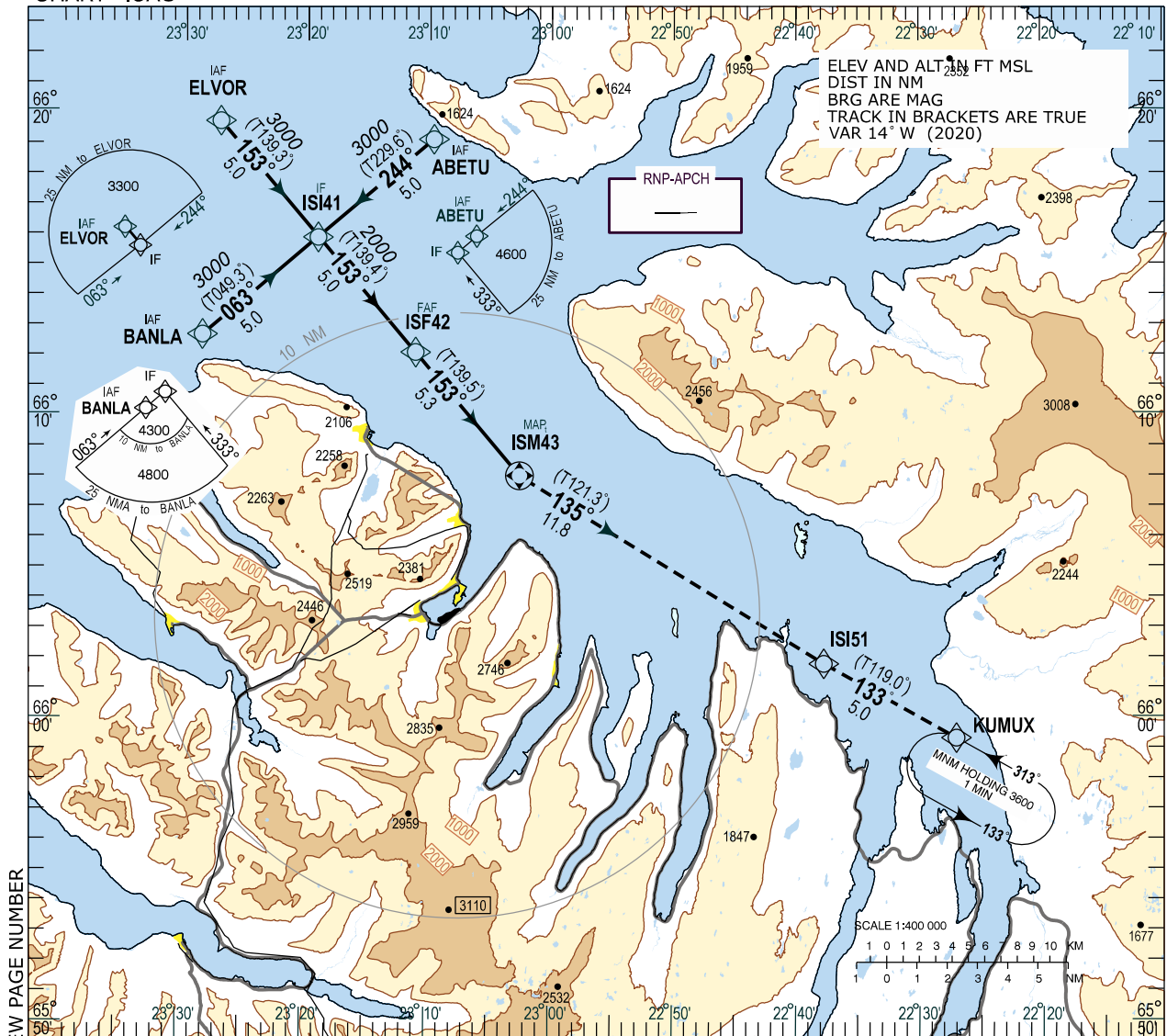
AERODROME ELEV 8

ISAFJORDUR AFIS 118.800
REYKJAVIK ACC 119.700

BIIS - ISAFJORDUR

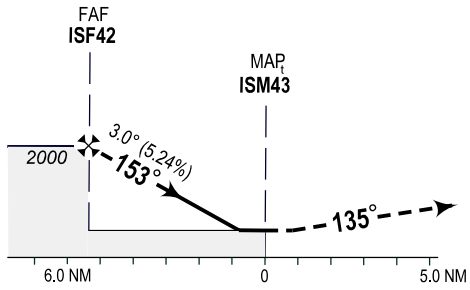
CLOUD BREAK
PROCEDURE

RNP C



CHANGES: NEW PAGE NUMBER

TRANSITION ALT 7000



MISSED APPROACH:
CLIMB ON COURSE 135° TO ISI51,
TO KUMUX AND HOLD AT 4000.
NO TURN BEFORE MAP

PROFILE SCALE 1:400 000

OCA (H)	Climb grad	A	B	REMARKS
LNAV CLOUD PENETRATION	2.5%	1200 (1192)	1200 (1192)	PROCEED VFR FROM ISM43 TO ISAFJORDUR AIRPORT, 220° - 5.2 NM
LNAV CLOUD PENETRATION	4.0%	500 (492)	500 (492)	PROCEED VFR FROM ISM43 TO ISAFJORDUR AIRPORT, 220° - 5.2 NM

DIST TO ISM43	5	4	3	2	1	
ALTITUDE	1890	1570	1260	940	620	
Timing not authorized for defining MAP						
GS	kt	80	100	120	140	160
ISF42 - ISM43 (5.3 NM)	MIN:SEC	3:58	3:11	2:39	2:16	1:59
Rate of descent 3.0° (5.2%)	ft/MIN	420	530	640	750	850

BIIS RNP C
Recommended Coding Table

Serial Number	Path Descriptor	Waypoint Identifier	Fly-over	Course / Track °M(°T)	Magnetic Variation	Distance	Turn Direction	Altitude (ft)	Speed (kt/h)	VPA/TCH	Navigation Specification
010	IF	BANLA			+14.0			A4400+			RNP APCH
020	TF	ISI41		063 (049.3)	+14.0	5.0	R	A3000+			RNP APCH
010	IF	ELVOR			+14.0			A3300+			RNP APCH
020	TF	ISI41		153 (139.3)	+14.0	5.0		A3000+			RNP APCH
010	IF	ABETU			+14.0			A4600+			RNP APCH
020	TF	ISI41		244 (229.6)	+14.0	5.0	L	A3000+			RNP APCH
030	TF	ISF42		153 (139.4)	+14.0	5.0		A2000+			RNP APCH
040	TF	ISM43	Y	153 (139.5)	+14.0	5.3	L				RNP APCH
050	TF	ISI51		135 (121.3)	+14.0	11.8					RNP APCH
060	TF	KUMUX		313 (299.2)	+14.0	5.0					RNP APCH
070	HM	KUMUX	Y	313 (319.2)	+14.0		L	A4000			RNP APCH

Waypoint coordinates

Waypoint Identifier	Coordinates		Display	
	LAT	LON	LAT	LON
BANLA	661240.86 N	0232824.96 W	N 6612.68	W02328.42
ELVOR	661942.38 N	0232706.57 W	N 6619.71	W02327.11
ABETU	661909.76 N	0230938.23 W	N 6619.16	W02309.64
ISI41	661555.59 N	0231902.79 W	N 6615.93	W02319.05
ISF42	661208.39 N	0231101.40 W	N 6612.14	W02311.02
ISM43	660805.33 N	0230230.02 W	N 6608.09	W02302.50
ISI51	660155.54 N	0223743.45 W	N 6601.93	W02237.72
KUMUX	655929.51 N	0222658.86 W	N 6559.49	W02226.98