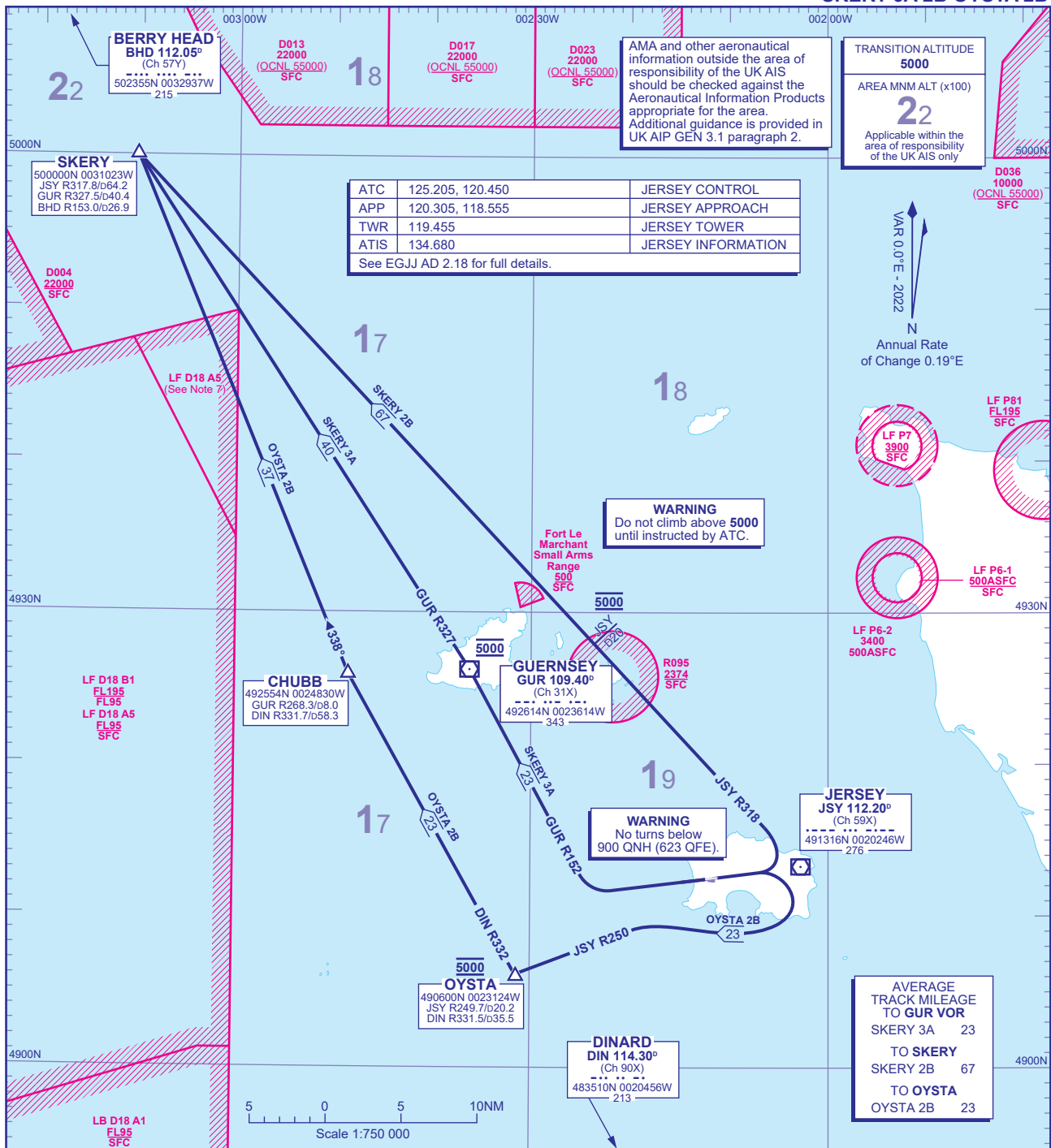


# STANDARD DEPARTURE CHART - INSTRUMENT (SID) - ICAO

DISTANCES IN NAUTICAL MILES  
BEARINGS, TRACKS AND RADIALS ARE MAGNETIC  
ALTITUDES AND ELEVATIONS ARE IN FEET

JERSEY RWY 08/26  
**SKERY 3A 2B OYSTA 2B**



ATC	125.205, 120.450	JERSEY CONTROL
APP	120.305, 118.555	JERSEY APPROACH
TWR	119.455	JERSEY TOWER
ATIS	134.680	JERSEY INFORMATION

See EGJJ AD 2.18 for full details.

TRANSITION ALTITUDE  
**5000**

AREA MNM ALT (x100)  
**22**

Applicable within the area of responsibility of the UK AIS only

**WARNING**  
Do not climb above 5000 until instructed by ATC.

**WARNING**  
No turns below 900 QNH (623 QFE).

AVERAGE TRACK MILEAGE TO GUR VOR

SKERY 3A	23
TO SKERY	67
TO OYSTA	23

SKERY 3A RWY 26	Climb straight ahead, at or above 3000 turn right onto GUR VOR R152 to GUR VOR, cross GUR VOR at 5000. At GUR VOR turn left onto GUR VOR R327 to SKERY.	L22/N864.
SKERY 2B RWY 08	Turn left to intercept and follow JSY VOR R318 to SKERY. Cross JSY VOR R318 d20 at 5000.	L22/N864.
OYSTA 2B RWY 08	Turn right to intercept and follow JSY VOR R250 to OYSTA, cross OYSTA at 5000. At OYSTA turn right onto DIN VOR R332 to CHUBB. At CHUBB turn right onto track 338° to SKERY.	L22/N864.

**GENERAL INFORMATION**

- SIDs reflect Noise Preferential Routeings. See EGJJ AD 2.21 for Noise Abatement Procedures.
- NOISE PREFERENTIAL ROUTEINGS for SKERY 2B and OYSTA 2B only.  
PROPELLER DRIVEN AIRCRAFT: RWY 26. Climb straight ahead to a minimum of 900 AMSL before turning. RWY 08. Climb straight ahead to a minimum of 900 AMSL before turning.  
TURBO-JET AIRCRAFT: RWY 26/08. Straight ahead to a minimum of 1800 AMSL before turning.
- Call sign for RTF frequency used when instructed after take-off 'Jersey Control'. Report call sign, SID Designator, current level and cleared level on first contact with 'Jersey Control'.
- En-route cruising levels will be allocated after take-off by 'Jersey Control. Do not climb above SID level until cleared by ATC.
- SKERY SIDs: Allocated cruising level to be achieved by SKERY.
- Outside the operating hours of Guernsey ATC, GUR VOR is unmonitored.
- LF D18 A5 SFC-FL95, except for within CHANNEL ISLANDS CTA-1 (South) and TMA (South) when active.

CHANGE (7/24): GUR VOR RECALIBRATED.