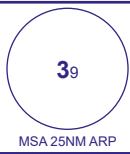
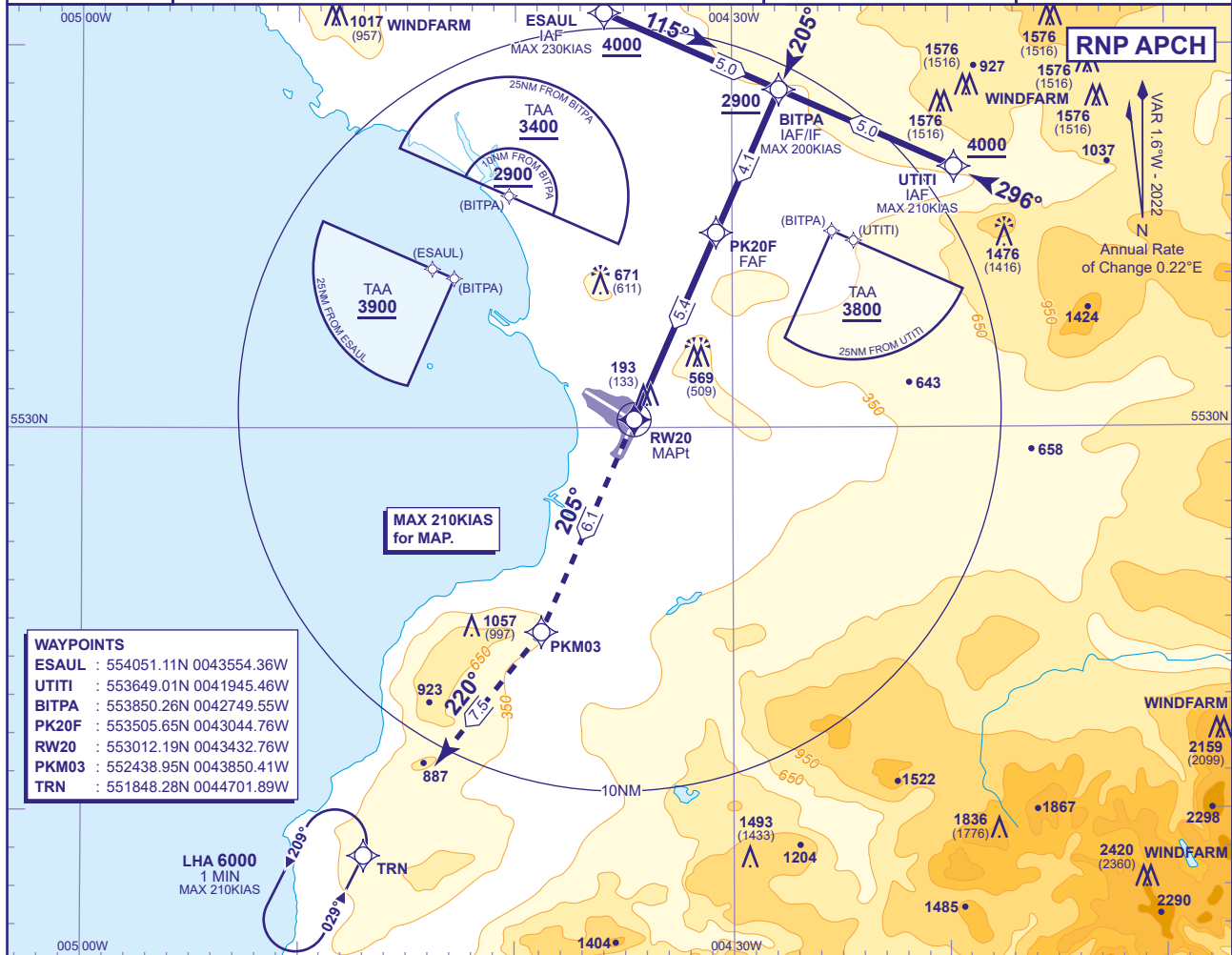


INSTRUMENT APPROACH CHART - ICAO

PRESTWICK
RNP RWY 20
 (ACFT CAT A,B,C,D)



APP	129.450	PRESTWICK APPROACH	AD ELEVATION	65
TWR	118.150, 127.155	PRESTWICK TOWER	THR ELEVATION	60
RAD	129.450, 124.630	PRESTWICK RADAR	OBSTACLE ELEVATION	2420 AMSL (2360) (ABOVE THR)
ATIS	121.130	PRESTWICK INFORMATION	BEARINGS ARE MAGNETIC	MIN TEMP -15°C
				TRANSITION ALTITUDE 6000



WAYPOINTS

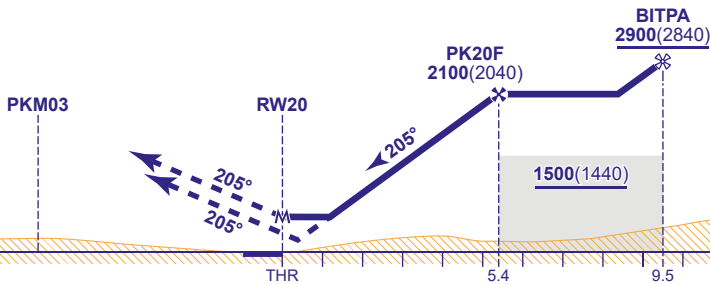
ESAUL	: 554051.11N 0043554.36W
UTITI	: 553649.01N 0041945.46W
BITPA	: 553850.26N 0042749.55W
PK20F	: 553505.65N 0043044.76W
RW20	: 553012.19N 0043432.76W
PKM03	: 552438.95N 0043850.41W
TRN	: 551848.28N 0044701.89W

RECOMMENDED PROFILE VNAV Vertical Path Angle 3.5° (LNAV 6.12%), 370FT/NM

NM to RW20	4	3	2	1
ALT(HGT)	1600(1540)	1220(1160)	850(790)	480(420)

MAPt (LNAV): RW20

Continuous climb to 6000. Initially climb straight ahead to PKM03. Then turn right to TRN and hold or as directed by ATC.



Aircraft Category	OCA (OCH)	Rate of descent				G/S KT	160	140	120	100	80
		A	B	C	D						
	LNAV/VNAV	610(550)	620(560)	640(580)	650(590)	FT/MIN	990	870	740	620	500
	LNAV	710(650)	710(650)	710(650)	710(650)						
	VM(C)OCA (OCH AAL)	Total Area	750(685)	870(805)	1070(1005)	1070(1005)					

NOTE 1 VPA exceeds 3.5° above 15°C.
NOTE 2 Portions of this procedure lie outside controlled airspace.

CHANGE (5/24): RWY DESIGNATOR.