

STANDARD DEPARTURE CHART -INSTRUMENT

RJNA / NAGOYA

SID

TALMI FOUR DEPARTURE

RWY16 : Climb RWY HDG to KCC 3.5DME, turn right HDG004° ...

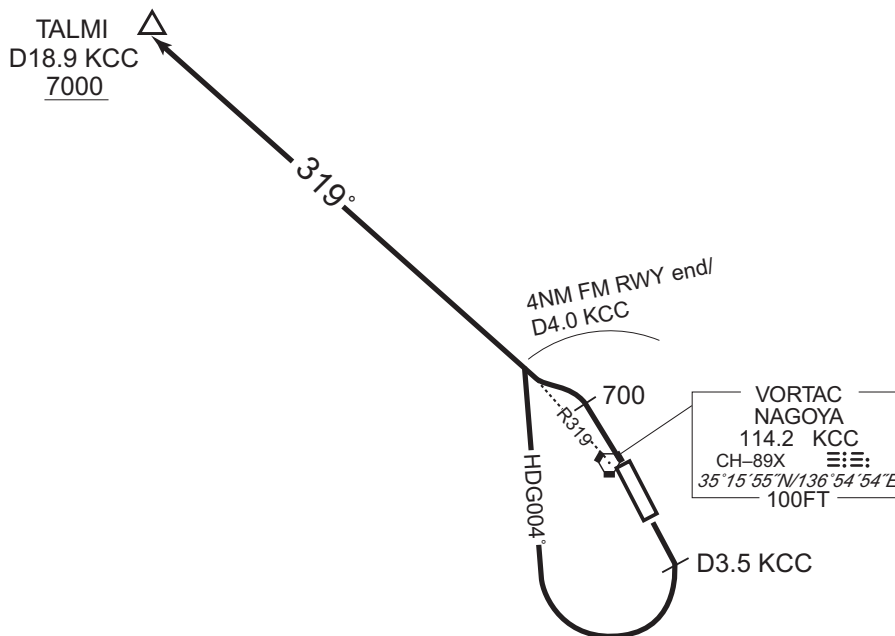
RWY34 : Climb RWY HDG to 700FT, turn left within 4NM from RWY end/KCC 4.0DME,...

...to intercept and proceed via KCC R319 to TALMI.
Cross TALMI at or above 7000FT.

Note RWY16 : 5.0% climb gradient required up to 700FT.

OBST ALT 551FT located at 1.9NM 215° FM end of RWY16.

RWY34 : 5.0% climb gradient required up to 700FT.



CHANGE : Description of PROC name.