

# AERODROME CHART

ATIS 126.4  
 TWR 118.45(124.35)  
 GND 121.6(124.35)(DCL AVBL)  
 APN 121.725

# ZSFZ FUZHOU/Changle

N25° 56.0'E119° 39.9' ELEV 14.3m

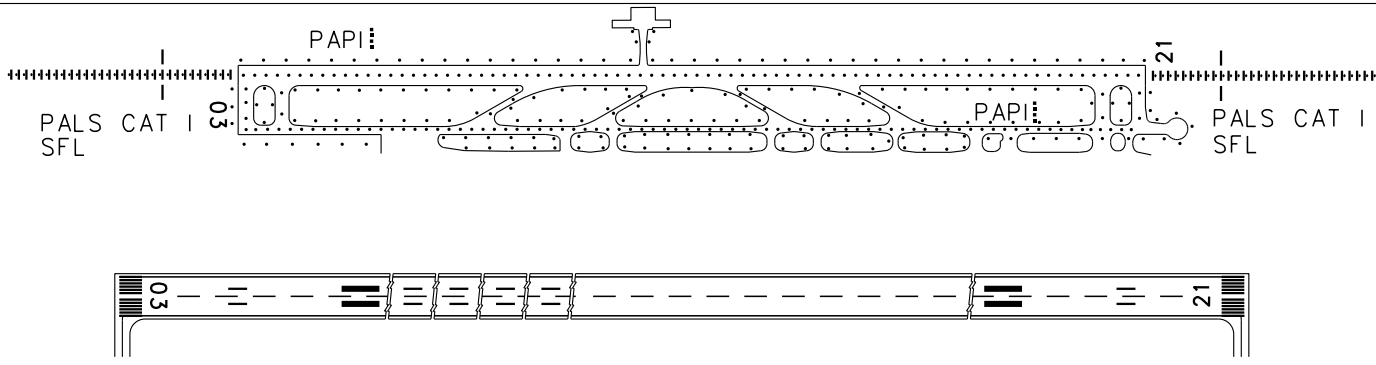
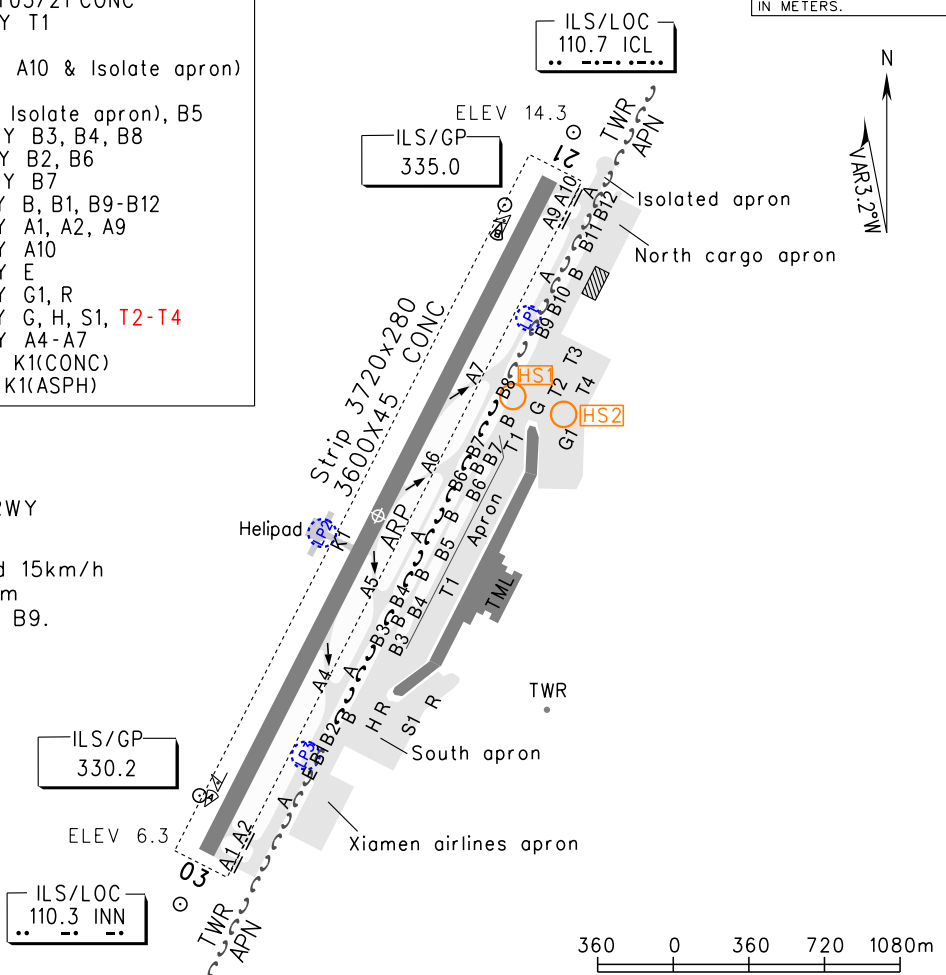
RWY	Direction	Bearing strength
03	030°	PCR 870/R/A/W/T: RWY03/21 CONC
		PCR 1170/R/B/W/T: TWY T1
21	210°	PCR 1040/R/A/W/T: TWY A(except BTN A10 & Isolate apron)
		PCR 1030/R/A/W/T: TWY A(BTN A10 & Isolate apron), B5
		PCR 1020/R/A/W/T: TWY B3, B4, B8
		PCR 1010/R/A/W/T: TWY B2, B6
		PCR 1000/R/A/W/T: TWY B7
		PCR 990/R/A/W/T: TWY B, B1, B9-B12
		PCR 980/R/A/W/T: TWY A1, A2, A9
		PCR 970/R/A/W/T: TWY A10
		PCR 870/R/A/W/T: TWY E
		PCR 670/R/A/W/T: TWY G1, R
		PCR 660/R/A/W/T: TWY G, H, S1, T2-T4
		PCR 550/R/A/W/T: TWY A4-A7
		PCR 131/R/B/W/U: TWY K1(CONC)
		PCR 111/F/B/X/U: TWY K1(ASPH)

BEARINGS ARE MAGNETIC.  
 ALTITUDES, DISTANCES,  
 ELEVATIONS AND HEIGHTS  
 IN METERS.

- Note:
- A/C are forbidden to enter RWY via TWY A4, A5, A6, A7.
  - Taxiing speed shall not exceed 15km/h while aircraft with wing span 65m taxiing along B between B8 and B9.

LEGEND:

- HS1 : Hot spot.
- LP2 : Helicopter landing point
- : Construction area



TAKE-OFF MINIMA(WITH RELIABLE ALTN)(m)				LIGHTS		
ACFT Type	RWY03		RWY21		RWY03	RWY21
	REDL	NIL(Day only)	REDL	NIL(Day only)		
2 TURB ENG or 3&4 ENG	A				PALS CAT I SFL PAPI REDL RCLL RENL	PALS CAT I SFL PAPI REDL RCLL RENL
	B	RVR400	RVR500	RVR400		
	C	VIS800	VIS800	VIS800		
	D					
Other 1&2 ENG						

Changes: Deleted TWY T5.