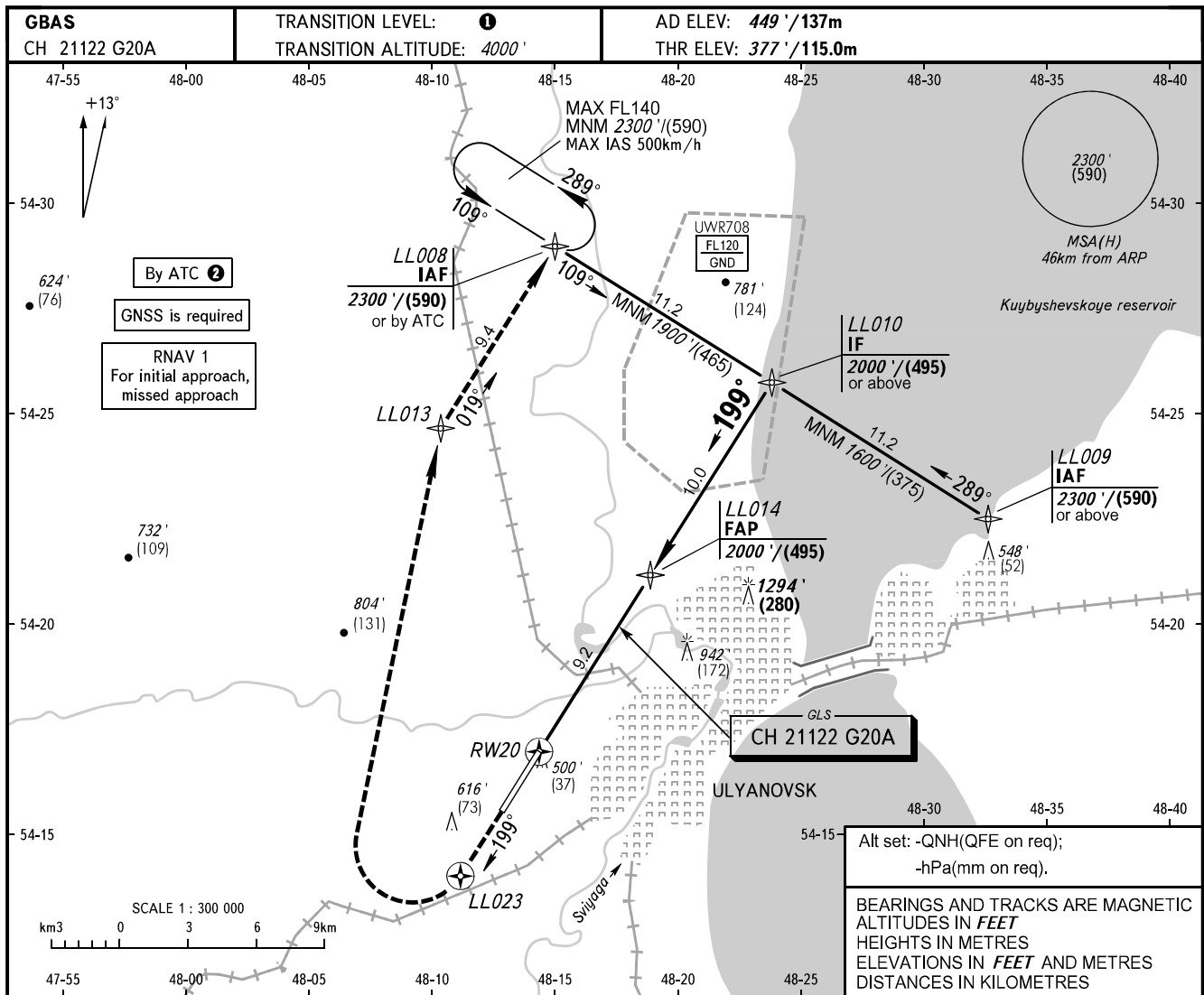


INSTRUMENT  
APPROACH  
CHART - ICAO

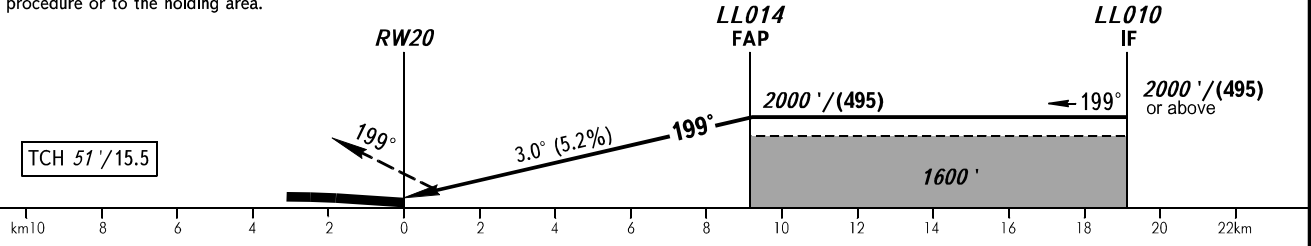
ULYANOVSK, RUSSIA  
BARATAYEVKA  
GLS RWY 20

RADAR 120.800  
PRECISION 120.400



**MISSED APPROACH**

Climb straight ahead to LL023, turn RIGHT to LL013, then to LL008 climbing to 2300'/(590) or as instructed by ATS unit, then according to the procedure or to the holding area.



OCA(H)		A	B	C	D
Straight-in Approach	<b>CAT I</b>	552' (176')	564' (188')	572' (196')	583' (207')
Circling		920' (470')	1010' (560')	1340' (890')	1340' (890')

**1** TRANSITION LEVEL:  
- FL050 when QNH is 1013 hPa (760mm mercury column) or above;  
- FL060 when QNH is 977 hPa (733mm mercury column) or above, but less than 1013 hPa (760mm mercury column);  
- FL070 when QNH is less than 977 hPa (733mm mercury column).

**2** When restricted area UWR708 is active.

**3** Visual manoeuvring east of the AD is PROHIBITED.

GROUND SPEED	km/h	150	180	210	240	270	300	330	360	390
RATE OF DESCENT	m/s	2.2	2.6	3.0	3.5	3.9	4.3	4.8	5.2	5.6
	ft/min	427	512	597	682	768	853	938	1024	1109