

KNOB NOSTER, MISSOURI

# HI-ILS or LOC Z RWY 19

LOC I-MXJ <b>108.5</b>	APCH CRS <b>190°</b>	Rwy ldg <b>12,400</b> TDZE <b>871</b> Arprt Elev <b>871</b>
---------------------------	-------------------------	---

AL-496 [USAF]

WHITEMAN AFB (KSZL)

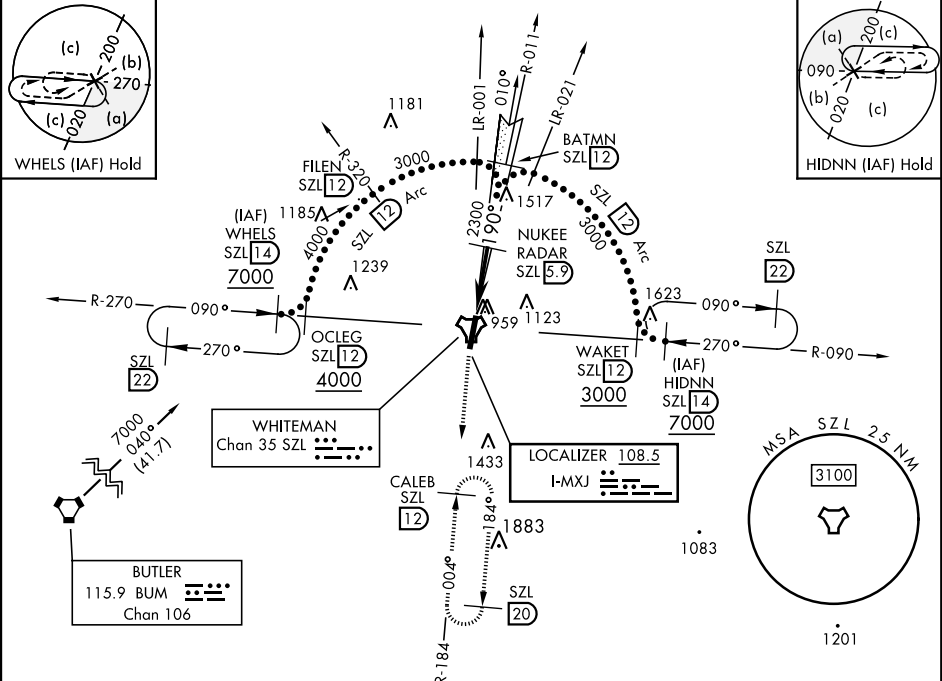
RADAR or DME required.



MISSED APPROACH: Climb to 3000 via SZL TACAN R-184 to CALEB and hold.

- \*When ALS inop, increase CAT CDE RVR to 40 and vis to 3/4 mile.
- \*\* When ALS inop, increase CAT CDE RVR to 55 and vis to 1 mile.
- \*\*\* Circling not authorized W of Rwy 1-19.

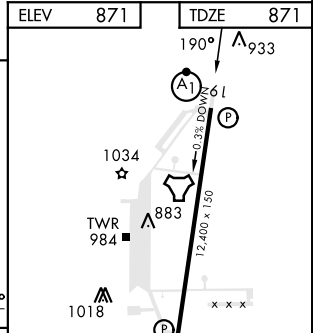
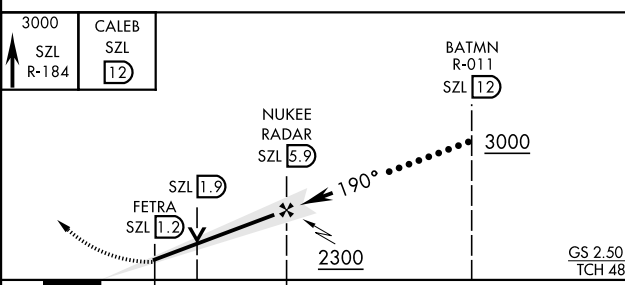
ATIS ★ <b>118.725 239.025</b>	APP CON ★ <b>127.45 284.0</b>	TOWER ★ <b>132.4 318.8</b>	GND CON ★ <b>119.125 275.8</b>	CLNC DEL ★ <b>121.75 335.8</b>	ASR
----------------------------------	----------------------------------	-------------------------------	-----------------------------------	-----------------------------------	-----



NC-3, 20 MAR 2025 to 17 APR 2025

NC-3, 20 MAR 2025 to 17 APR 2025

EMERG SAFE ALT 100 NM 4700



CATEGORY	C	D	E
S-ILS 19 *	1071/24	200	(200-1/2)
S-LOC 19 **	1220/30	349	(400-5/8)
*** CIRCLING	1340-1 1/2 469 (500-1 1/2)	1460-2	589 (600-2)

ELEV	871	TDZE	871
HIRL Rwy 1-19			
FAF to MAP 4.7 NM			
Knots	120	140	160 180 200
Min:Sec	2:21	2:01	1:46 1:34 1:25

KNOB NOSTER, MISSOURI

38°44'N-93°33'W

WHITEMAN AFB (KSZL)

Amtd 1 10OCT19

# HI-ILS or LOC Z RWY 19