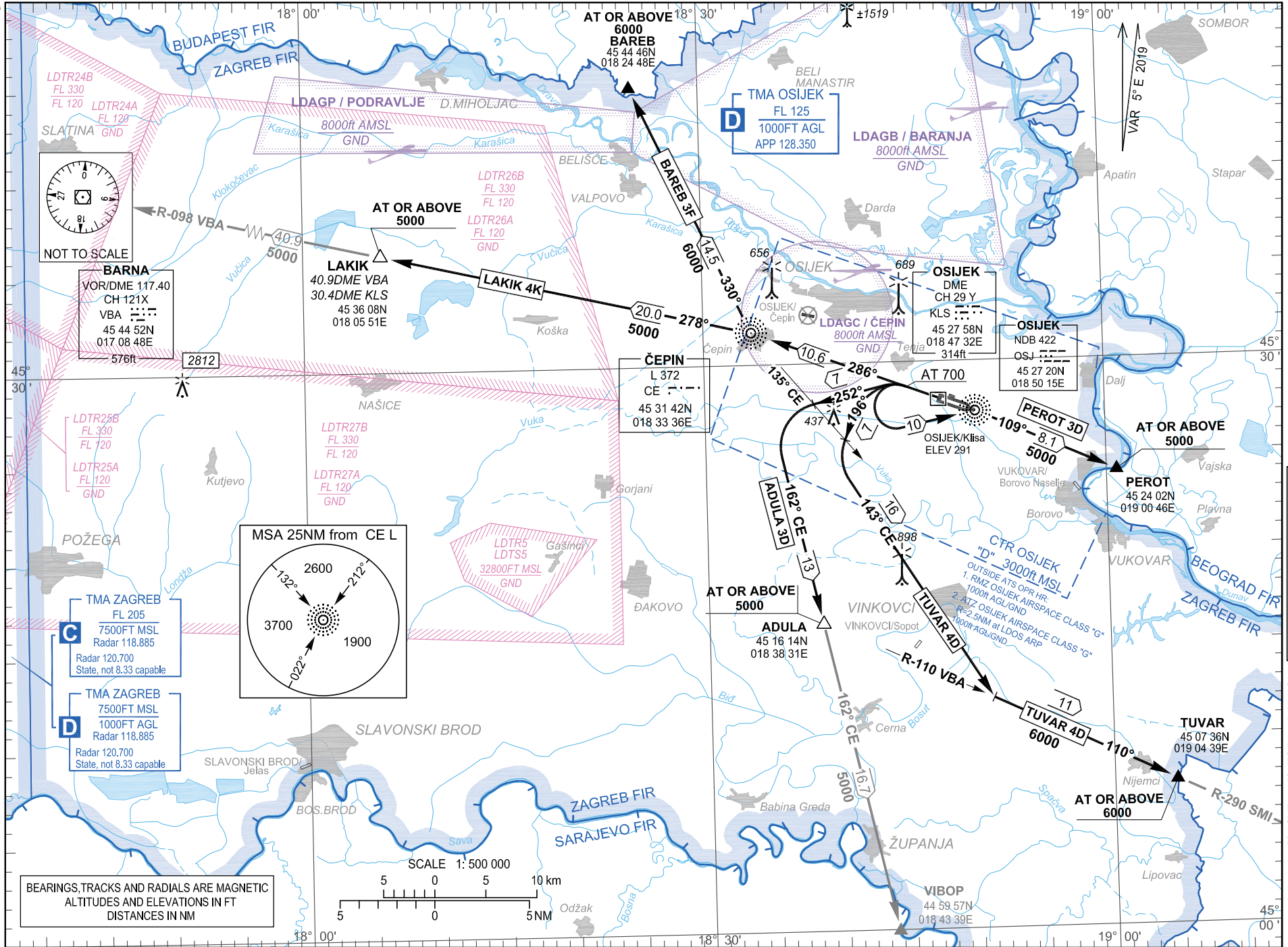


Change: ZAGREB RADAR frequency; Editorial.

© Hrvatska kontrola zračne plovidbe d.o.o.
Croatia Control Ltd.



STANDARD DEPARTURE CHART
INSTRUMENT (SID) - ICAO

TRANSITION ALTITUDE
10 000

OSIJEK TOWER
OSIJEK APPROACH
OSIJEK APPROACH ALTN
128.350
128.350
123.850

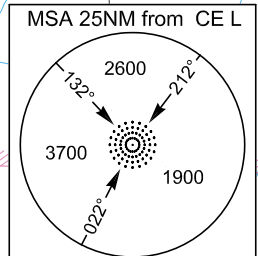
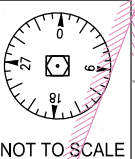
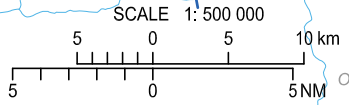
OSIJEK / Klisa (LDOS)
RWY 29

AIP HRVATSKA
AIP CROATIA

LDOS AD 2.24.8 SID RWY 29 - 1
05 SEP 2024

AIRAC AIP AMDT 008/2024

BEARINGS, TRACKS AND RADIALS ARE MAGNETIC
ALTITUDES AND ELEVATIONS IN FT
DISTANCES IN NM



BARNA
VOR/DME 117.40
CH 121X
VBA
45 44 52N
017 08 48E

LAKIK
40.9DME VBA
30.4DME KLS
45 36 08N
018 05 51E

ČEPIN
L 372
CE
45 31 42N
018 33 36E

OSIJEK
DME
CH 29 Y
KLS
45 27 58N
018 47 32E
314ft

OSIJEK
NDB 422
OSJ
45 27 20N
018 50 15E

PEROT
45 24 02N
019 00 46E

TMA ZAGREB
FL 205
7500FT MSL
Radar 118.885
Radar 120.700
State, not 8.33 capable

TMA ZAGREB
7500FT MSL
1000FT AGL
Radar 118.885
Radar 120.700
State, not 8.33 capable

ADULA
45 16 14N
018 38 31E

VIBOP
44 59 57N
018 43 39E

TUVAR
45 07 36N
019 04 39E

OVA STRANICA JE NAMJERNO OSTAVLJENA PRAZNA
THIS PAGE INTENTIONALLY LEFT BLANK