

WAAS CH <b>77812</b> <b>W24A</b>	APP CRS <b>246°</b>	Rwy Idg <b>5425</b> TDZE <b>43</b> Apt Elev <b>54</b>
--	------------------------	---

# RNAV (GPS) RWY 24

CAPE COD GATEWAY (HYA)

RNP APCH - GPS

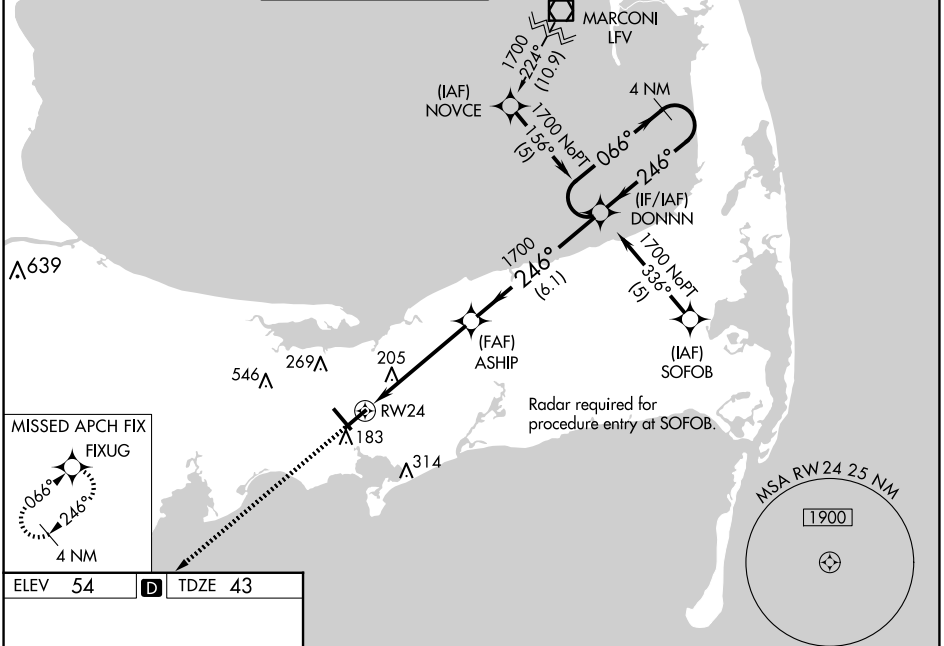
▼ For uncompensated Baro-VNAV systems, LNAV/VNAV NA below -15°C or above 48°C. Rwy 24 helicopter visibility reduction below RVR 5000 NA. When local altimeter setting not received, use Chatham altimeter setting; increase LPV DA to 350 feet; increase LNAV/VNAV DA to 473 feet; increase all MDAs 40 feet, LNAV visibility Cats C and D to RVR 6000, and Circling visibility Cats C/D ½ SM. Baro-VNAV NA when using Chatham Muni altimeter setting. For inop ALS, increase LNAV/VNAV all Cats visibility to RVR 6000, LNAV Cat C/D visibility to 1½ SM. Inop table does not apply to LPV all Cats, and LNAV Cats A and B. Straight in/Circling Rwy 24 at night, operational VGSI required, remain on or above VGSI glidepath until threshold. For inop ALS when using Chatham altimeter setting, increase LNAV/VNAV visibility all Cats to 1½ SM.

MALSF

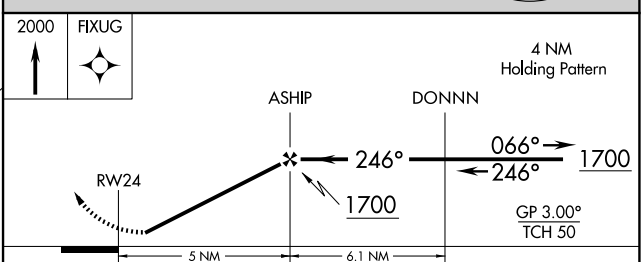
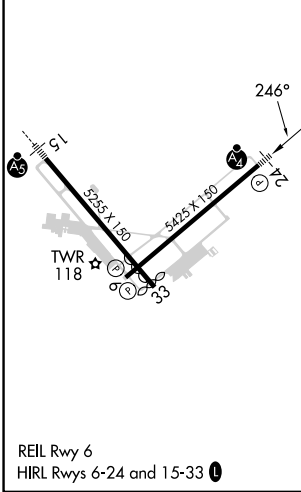


MISSED APPROACH:  
Climb to 2000 direct  
FIXUG and hold.

ATIS <b>123.8</b>	BOSTON APP CON <b>118.2 284.6</b>	HYANNIS TOWER ★ <b>119.5 (CTAF) 0 257.8</b>	GND CON <b>118.45</b>	CLNC DEL <b>125.15</b>	CLNC DEL <b>120.125</b> (When twr closed)	UNICOM <b>122.95</b>
----------------------	--------------------------------------	--	--------------------------	---------------------------	---	-------------------------



ELEV 54	<b>D</b>	TDZE 43
---------	----------	---------



CATEGORY	A	B	C	D
LPV DA		318/50	275 (300-1)	
LNAV/VNAV DA		441/50	398 (400-1)	
LNAV MDA		500/50	457 (500-1)	
<b>C</b> CIRCLING	560-1 506 (600-1)	580-1 526 (600-1)	860-2 ¼ 806 (900-2¼)	860-2 ½ 806 (900-2½)

NE-1, 20 MAR 2025 to 17 APR 2025

NE-1, 20 MAR 2025 to 17 APR 2025