

MARYSVILLE, CALIFORNIA

# ILS or LOC Y RWY 33

LOC I-MIZ <b>109.5</b>	APCH CRS <b>325°</b>	Rwy ldg TDZE Arprt Elev	<b>12,001</b> <b>105</b> <b>113</b>
---------------------------	-------------------------	-------------------------------	---

-(USAF)

BEALE AFB (KBAB)

RADAR or DME required

▼ \* When ALS inop, increase RVR to 40 and vis to 3/4 mile.  
 \*\* When ALS inop, increase CAT AB RVR to 55 and vis to 1 mile;  
 CAT CDE RVR to 60 and vis to 1 1/8 miles.

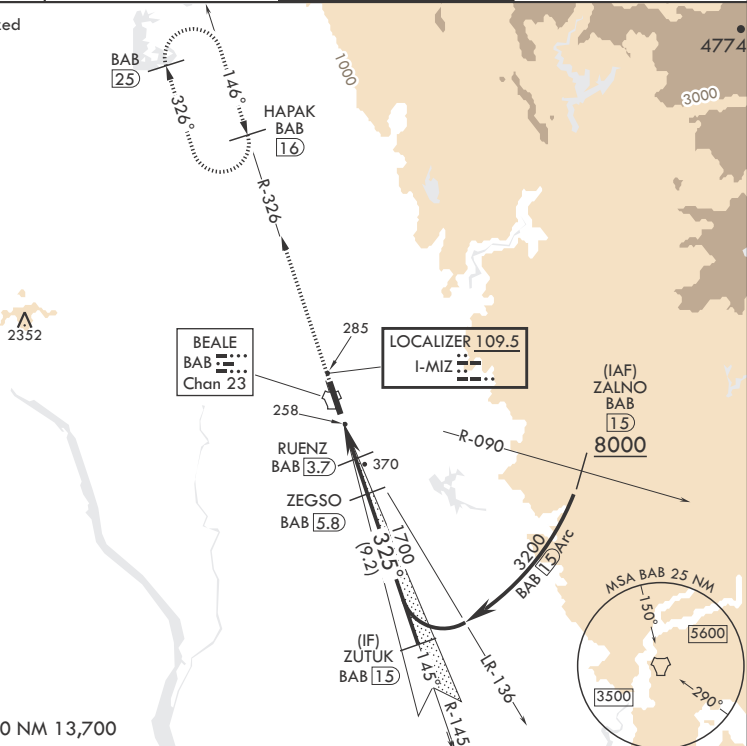
ALSF-1



MISSED APPROACH: Climb to 3600 intercept  
 BAB TACAN R-326 to HAPAK and hold.

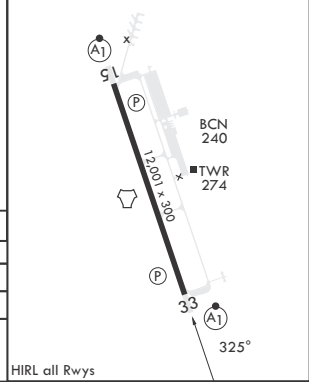
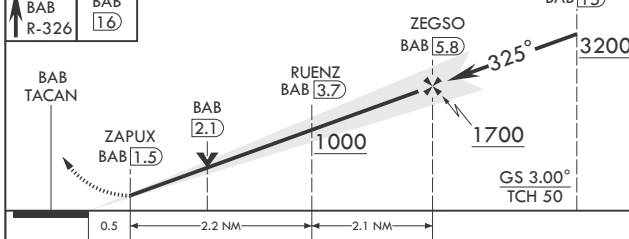
ATIS★ <b>124.55 273.5</b>	NORCAL APP CON <b>125.4 259.1</b>	TOWER★ <b>119.4 284.75</b>	GND CON <b>121.6 257.75</b>
------------------------------	--------------------------------------	-------------------------------	--------------------------------

\*\*\* Circling not authorized  
 E of Rwy 15-33.



EMERG SAFE ALT 100 NM 13,700

3600 BAB R-326	HAPAK BAB 16	ZUTUK BAB 15	ELEV 113	TDZE 105
----------------------	--------------------	--------------------	----------	----------



CATEGORY	A	B	C	D	E
S-ILS 33*	305/24		200	(200-1/2)	
S-LOC 33**	520/24	415 (500-1/2)	520/40	415	(500-3/4)
CIRCLING***	600-1	487 (500-1)	600-1 1/2 487 (500-1 1/2)	800-2 1/4 687 (700-2 1/4)	800-2 1/2 687 (700-2 1/2)

HIRL all Rwys

MARYSVILLE, CALIFORNIA

39°08'N - 121°26'W

BEALE AFB (KBAB)

Amdt 6 22FEB24

# ILS or LOC Y RWY 33

SW-2, 20 MAR 2025 to 17 APR 2025

SW-2, 20 MAR 2025 to 17 APR 2025