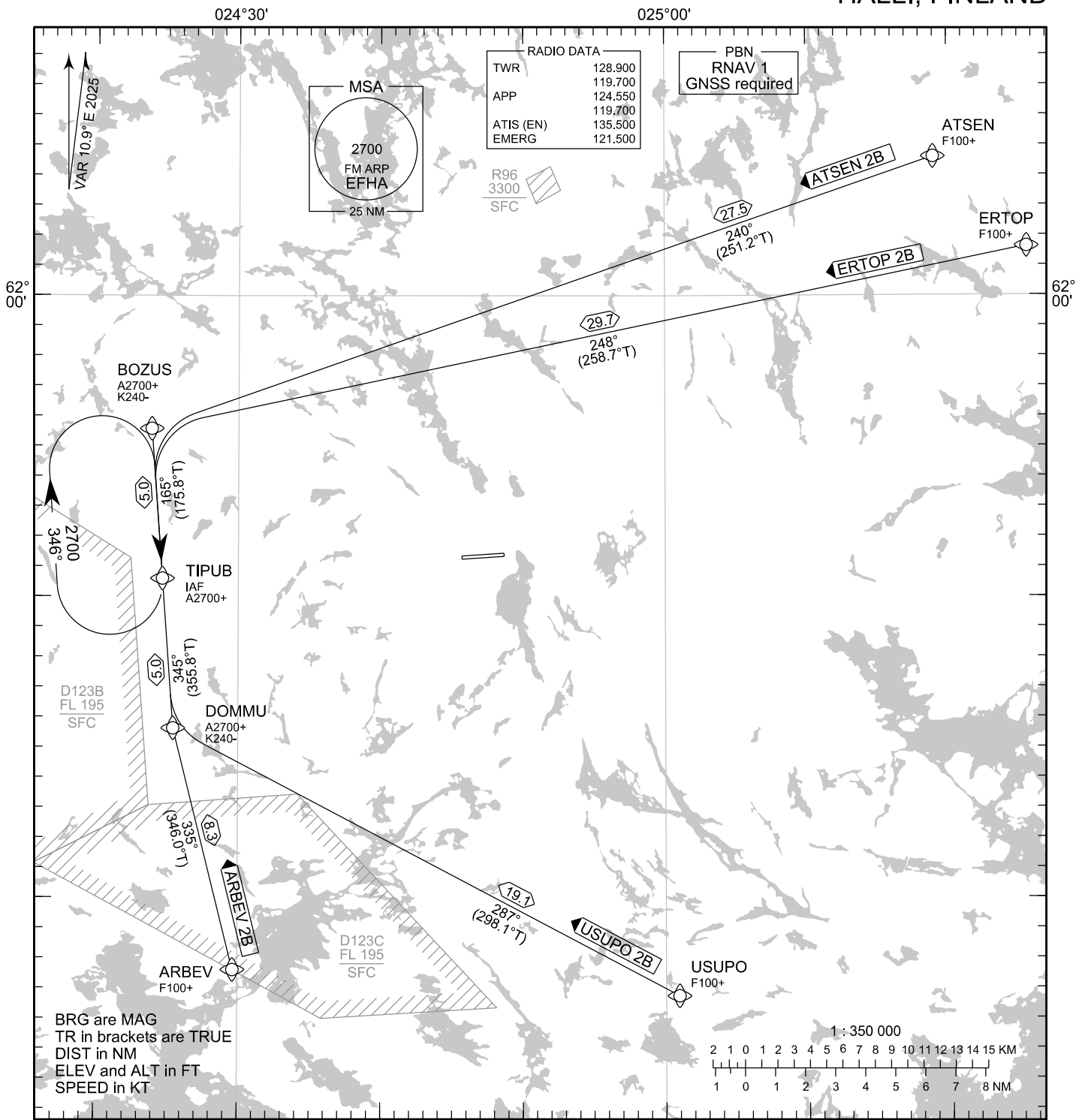


TRANSITION ALT
5000



RNAV STAR RWY 08

ARBEV 2B ATSEN 2B ERTOP 2B USUPO 2B

DME/DME OPS: NOT SUPPORTED

RCF: SELECT TRANSPONDER CODE 7600

ROUTES: RNAV PROC CODING ON THE VERSO OF THE CHART
ATC WILL GIVE DESCENT CLEARANCES

RNAV STAR HAS BEEN GIVEN AND ACKNOWLEDGED:
FOLLOW THE STAR TO THE RESPECTIVE RWY
AND EXECUTE IAP AND LAND

WPT CONSTRAINTS: ALT / FL / SPEED CONSTRAINTS MUST ALWAYS BE FOLLOWED AS
PUBLISHED UNLESS EXPLICITLY CANCELLED BY ATC

AREA MNM ALT: SEE AMA INDEX, AIP ENR 6.1 - 3

CD OPS: BY ATC CLR IF TFC PERMITS. PLAN CD PATH ACCORDING TO STAR

CHG: MAG VAR

EFHA RNAV STAR RWY 08										
RTE NAV SPEC	SEQ NR	P/T	WPT		MAG	GEO TR	DIST NM	Constraints		
			ID	Flyover				LVL	LVL	Speed
ARBEV 2B RNAV 1	010	IF	ARBEV	-	-	-	-	F100+		
	020	TF	DOMMU	-	335°	346.0°T	8.3	A2700+		K240-
	030	TF	TIPUB	-	345°	355.8°T	5.0	A2700+		
ATSEN 2B RNAV 1	010	IF	ATSEN	-	-	-	-	F100+		
	020	TF	BOZUS	-	240°	251.2°T	27.5	A2700+		K240-
	030	TF	TIPUB	-	165°	175.8°T	5.0	A2700+		
ERTOP 2B RNAV 1	010	IF	ERTOP	-	-	-	-	F100+		
	020	TF	BOZUS	-	248°	258.7°T	29.7	A2700+		K240-
	030	TF	TIPUB	-	165°	175.8°T	5.0	A2700+		
USUPO 2B RNAV 1	010	IF	USUPO	-	-	-	-	F100+		
	020	TF	DOMMU	-	287°	298.1°T	19.1	A2700+		K240-
	030	TF	TIPUB	-	345°	355.8°T	5.0	A2700+		
RNAV Holdings										
ID	INBD TR	INBD MAG	Turn Direction	Speed	MNM HLDG LVL	TIME	DIST NM			
TIPUB	176.4°T	166°	Right	K230-	A2700	1 MIN	-			
WPT COORD										
SEE PAGE EFHA AD 2.15 - 1										