

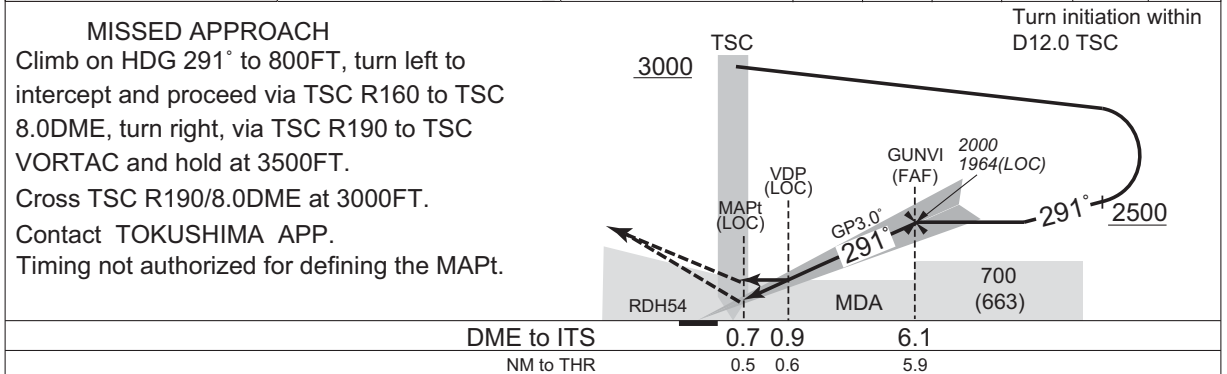
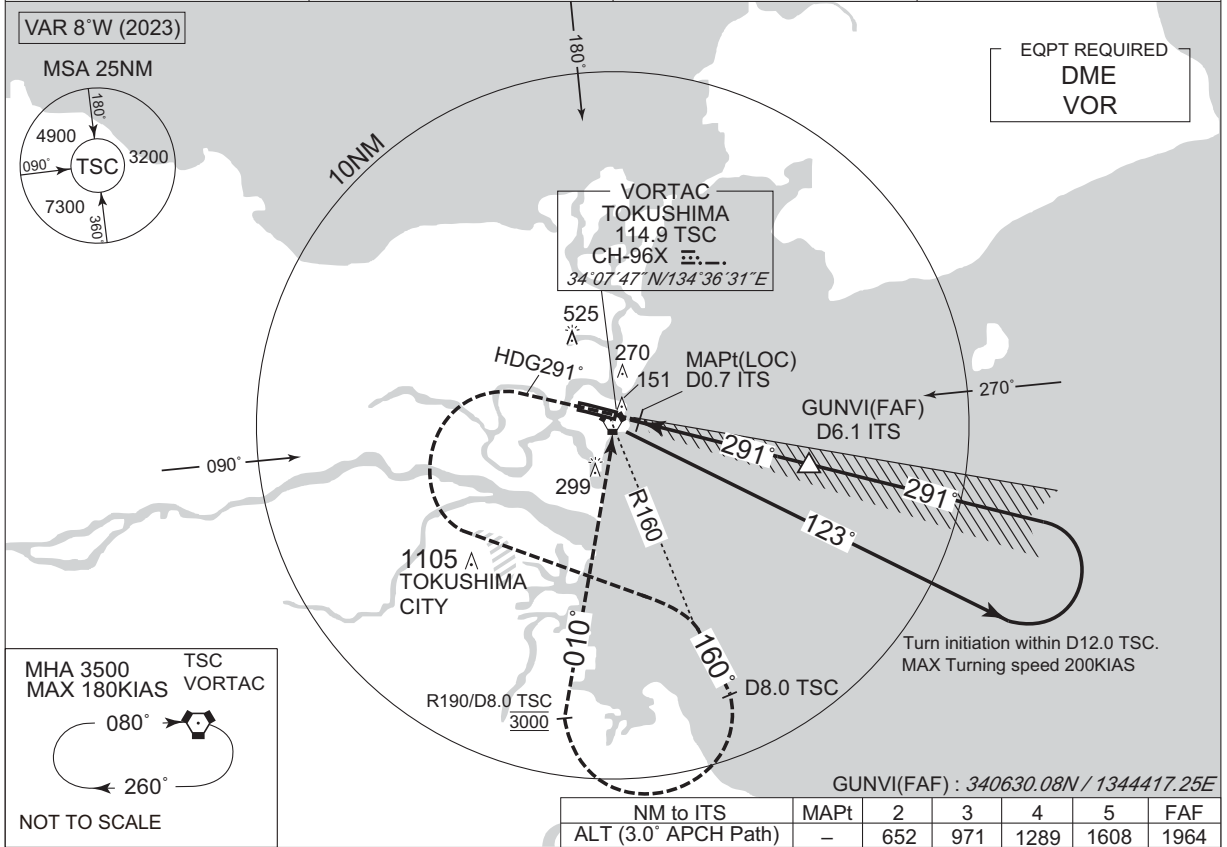
INSTRUMENT APPROACH CAHRT

RJOS / TOKUSHIMA

ILS Y or LOC Y RWY 29

TOKUSHIMA APP 120.1 - 124.0 261.2 - 284.6	ILS-LOC 108.9 ITS :: ILS-GP 329.3 ILS-DME CH-26X	TOKUSHIMA TOWER 118.0 - 126.2 233.8 - 236.8	RADAR AVBL CALL TOKUSHIMA APP
---	---	---	-------------------------------------

CHANGE : PROC course. Missed APCH PROC. MINIMA. ALT(3.0° APCH Path) established. HLDG pattern. EQPT REQUIRED. EQPT REQUIRED.
PROC ALT established. OCA/H established. ALT restriction. GUNVI established. DME to ITS. NM to THR.



MISSED APPROACH
Climb on HDG 291° to 800FT, turn left to intercept and proceed via TSC R160 to TSC 8.0DME, turn right, via TSC R190 to TSC VORTAC and hold at 3500FT.
Cross TSC R190/8.0DME at 3000FT.
Contact TOKUSHIMA APP.
Timing not authorized for defining the MAPt.

DME to ITS		0.7	0.9	6.1
NM to THR		0.5	0.6	5.9

Missed APCH climb gradient MNM 4.0%

CAT	CAT I		LOC		CIRCLING	
	DA(H)	RVR/CMV	MDA(H)	RVR/CMV	MDA(H)	VIS
A	237 (200)	1000	290 (253)	1500	570 (533)	1600
B				1600	600 (563)	2400
C				1800	830 (793)	3200
D						

MINIMA with Missed APCH climb gradient of 2.5% are not established.